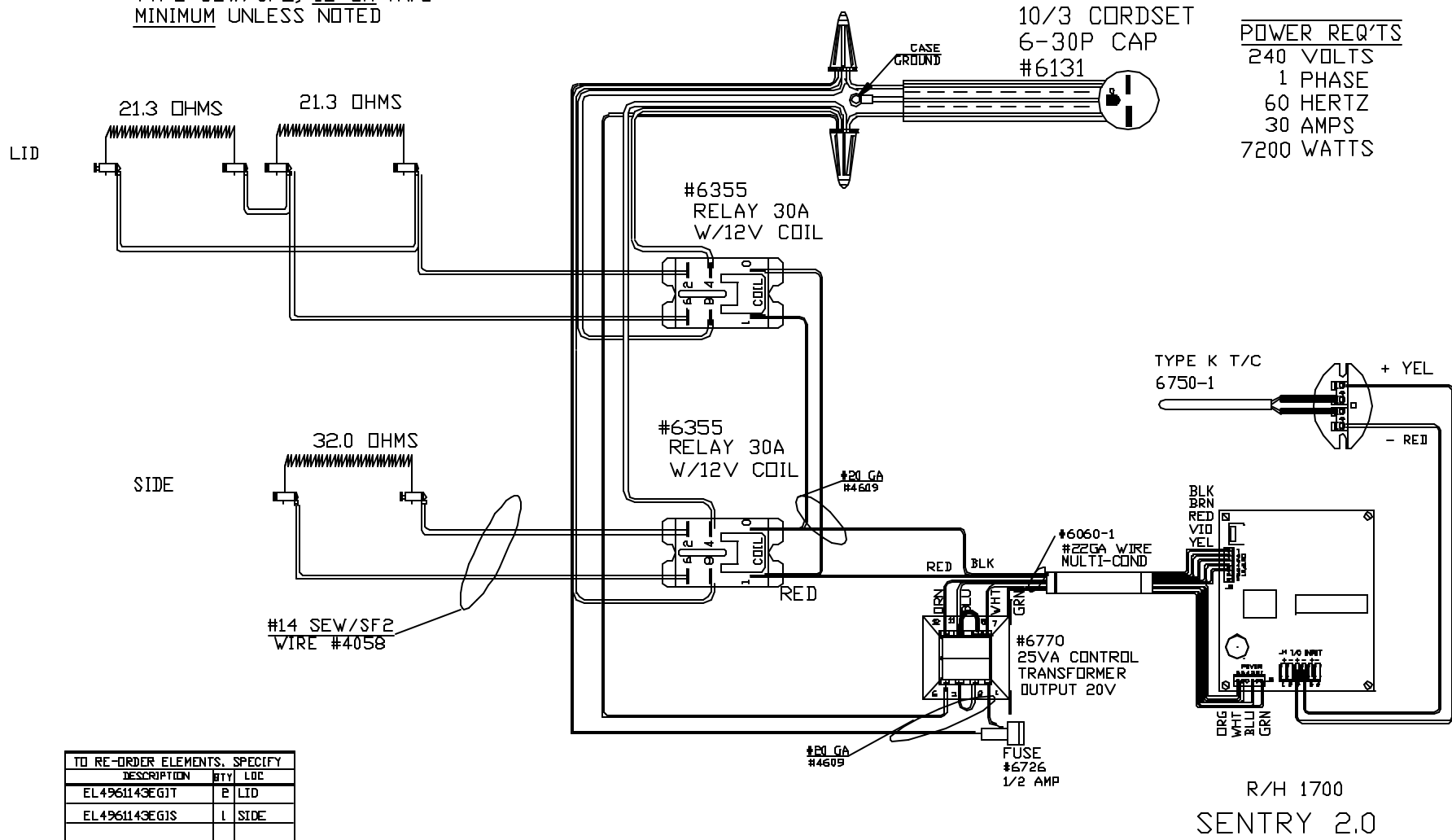


WIRING NOTE

NOTE: ALL WIRES TO BE  
TYPE SEW/SF2, 12 GA AWG  
MINIMUM UNLESS NOTED

POWER REQ'TS

240 VOLTS  
1 PHASE  
60 HERTZ  
30 AMPS  
7200 WATTS



TO RE-ORDER ELEMENTS, SPECIFY		
DESCRIPTION	QTY	LOC
EL4961143EG1T	2	LID
EL4961143EG1S	1	SIDE

REV	DATE	BY	DESCRIPTION
-	4/16/06	DTB	
A	1/3/07	DTB	ADDED SECOND RELAY

SWITCH BOX ASSY-42018-9

PARAGON INDUSTRIES  
2011 SOUTH TOWN EAST BLVD

NOTE: PLEASE REFER  
TO THIS NUMBER WHEN  
ORDERING PARTS FOR  
THIS KLN

WIRING DIAGRAM

PART NO 4961143EGI

REV A

CFG 5  
1700°F