

PART NO 9A211J1B00

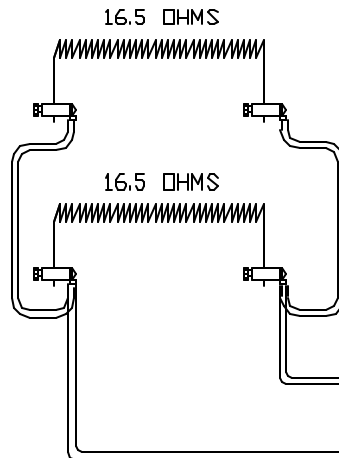
HIGH TEMP CS/HSJ/HSJD

#60050
#14-3 CORDSET
5-15P CAP

POWER REQ'TS
120 VOLTS
1 PHASE
60 HERTZ
15 AMPS
1750 WATTS

WIRING NOTE

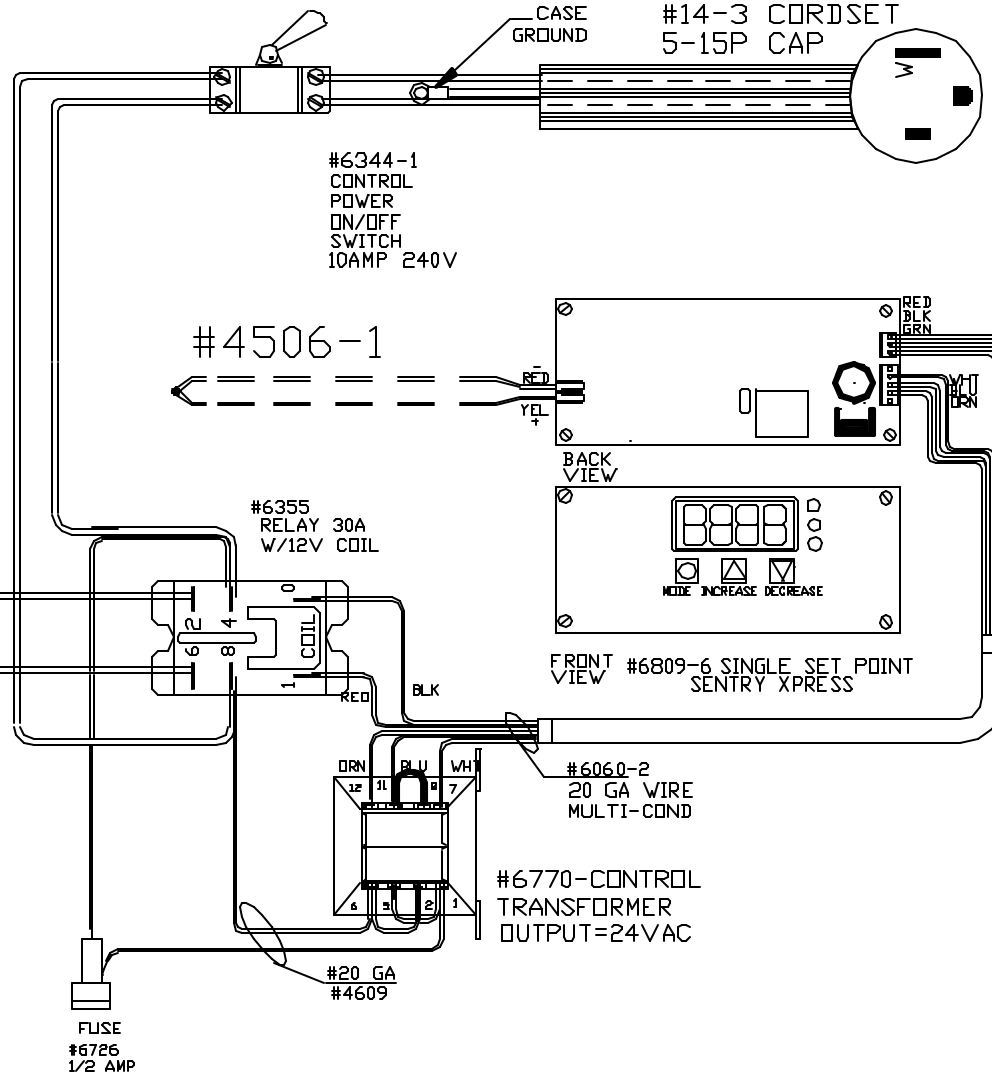
ALL WIRES #14 AWG,
TYPE SEW/SF2 MINIMUM
UNLESS OTHERWISE NOTED



TO RE-ORDER ELEMENTS, SPECIFY			
DESCRIPTION	QTY	LOC	
EL9A211J1B00	1	TOP	

WIRING NOTE

ALL WIRES #14 AWG,
TYPE SEW/SF2 MINIMUM
UNLESS OTHERWISE NOTED



CFG1
1500°F
BLUE

REV	DATE	BY	DESCRIPTION	SWITCH BOX ASSY- 42193-1	WIRING DIAGRAM	PART NO	REV
-	10/12/10	JTB		PARAGON INDUSTRIES 2011 SOUTH TOWN EAST BLVD MESQUITE, TEXAS 75149	120V 1 PHASE 60HZ 1750WATTS	9A211J1B00	-
						20X4.4X9 SSP BEAD FCE	FILE