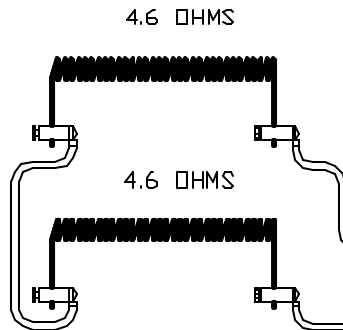


WIRING NOTE

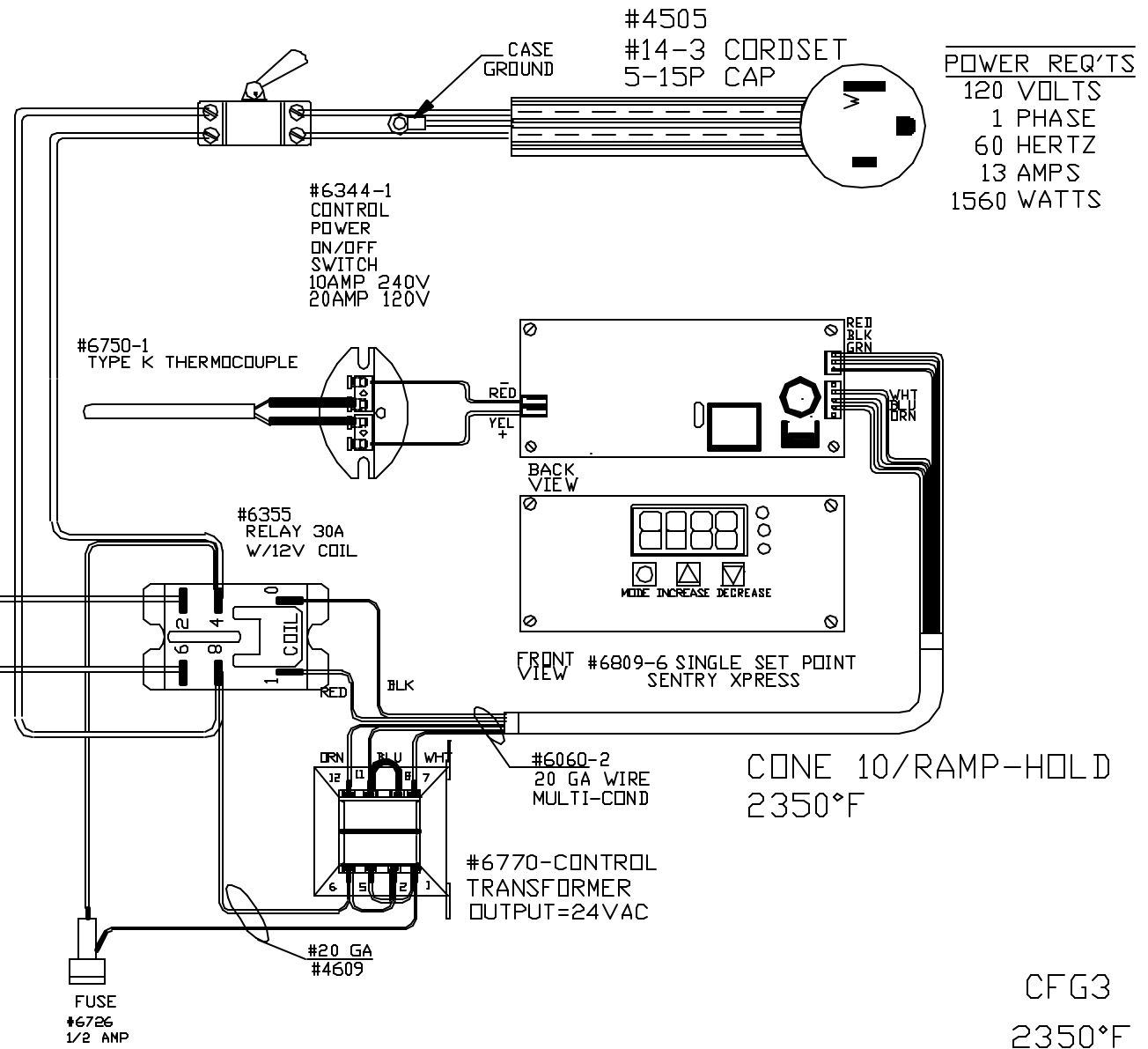
ALL WIRES #14 AWG,
TYPE SEW/SF2 MINIMUM
UNLESS OTHERWISE NOTED



TO RE-ORDER ELEMENTS, SPECIFY			
DESCRIPTION	QTY	LOC	
EL 92211J1B00S	2	SIDE	

WIRING NOTE

ALL WIRES #14 AWG,
TYPE SEW/SF2 MINIMUM
UNLESS OTHERWISE NOTED



REV	DATE	BY	DESCRIPTION
-	3/1/08	DTB	
A	3/23/11	DTB	INCREASED WATTS, CHG EL

SWITCH BOX ASSY- 42124-6

PARAGON INDUSTRIES
2011 SOUTH TOWN EAST BLVD
MESQUITE, TEXAS 75149

WIRING DIAGRAM

120V ,1 PHASE ,60HZ ,1560 WATTS

PART NO	REV
92211J1B00	A
8X8X4.5 FIREFLY	