

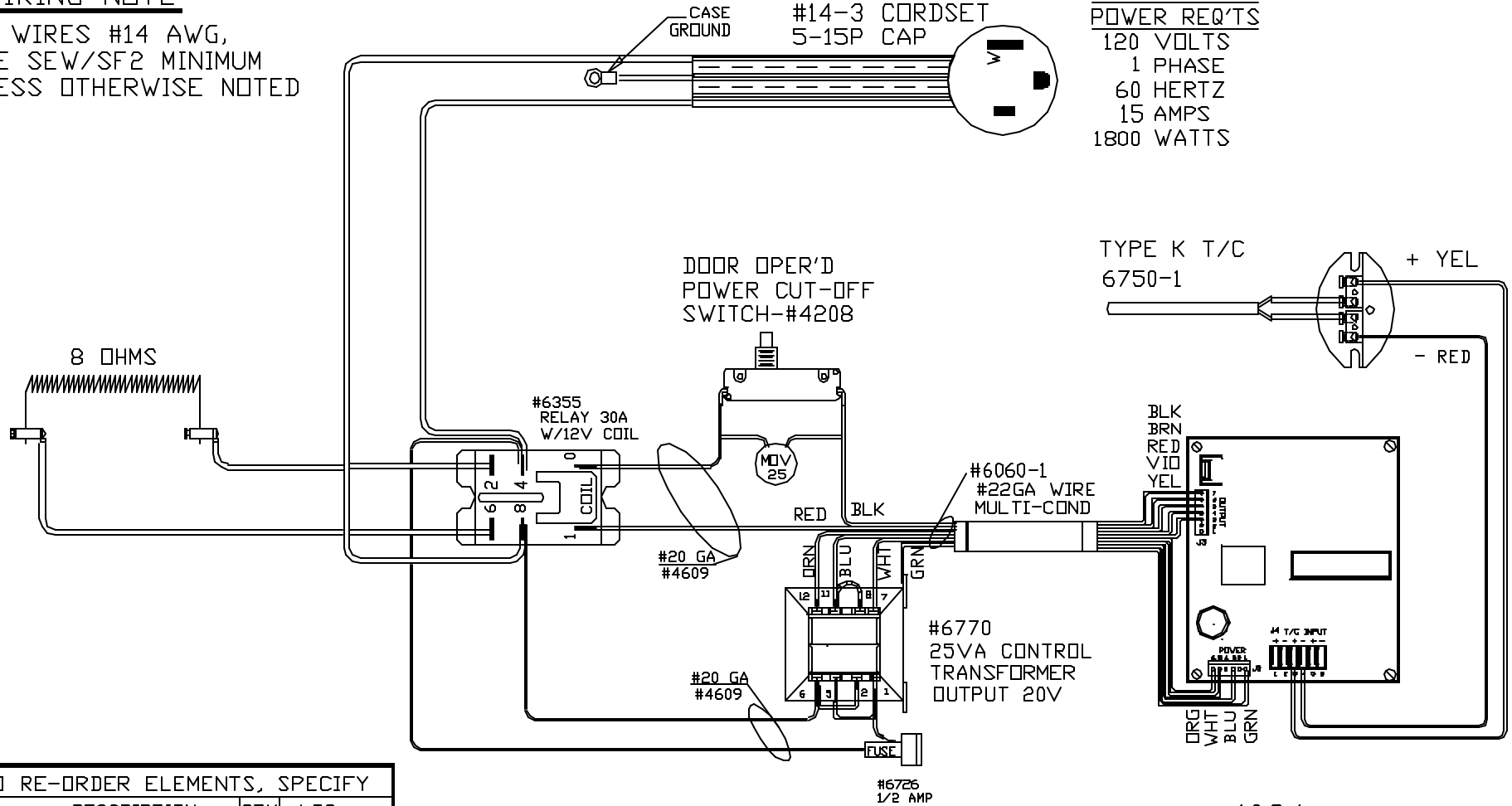
HIGH TEMP CS/HSJ/HSJD

#60050
#14-3 CORDSET
5-15P CAP

POWER REQ'TS
120 VOLTS
1 PHASE
60 HERTZ
15 AMPS
1800 WATTS

WIRING NOTE

ALL WIRES #14 AWG,
TYPE SEW/SF2 MINIMUM
UNLESS OTHERWISE NOTED



TO RE-ORDER ELEMENTS, SPECIFY		
DESCRIPTION	QTY	LOC
EL5A21221BBBS	1	SIDE

1024
SENTRY 2.0
CFG 5
2350° F
BLUE

NOTE: PLEASE REFER
TO THIS NUMBER WHEN
ORDERING PARTS FOR
THIS KILN

REV	DATE	BY	DESCRIPTION
-	4/23/1E	DTB	

SWITCH BOX ASSY- 40934-11

PARAGON INDUSTRIES
2011 SOUTH TOWN EAST BLVD
MESQUITE, TEXAS 75149

WIRING DIAGRAM

120V , 1 PHASE , 60HZ , 1800WATTS

PART NO	REV
5A21221BBB	-
KM18D	FILE