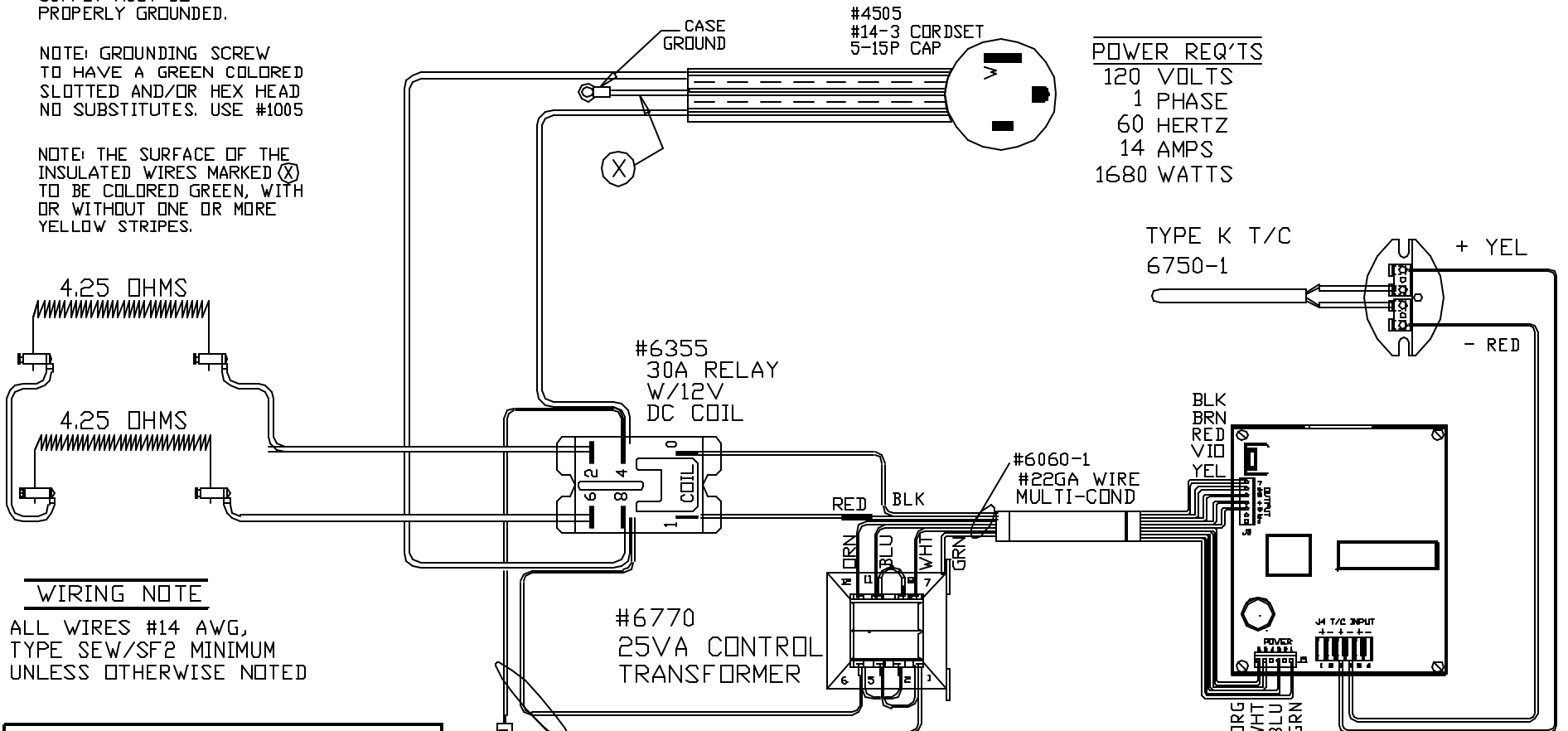


CAUTION

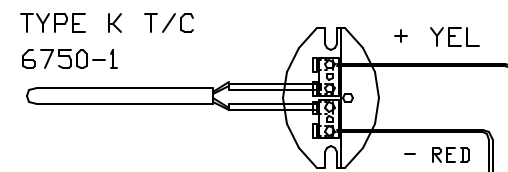
TO PROVIDE CONTINUED PROTECTION AGAINST THE RISK OF ELECTRIC SHOCK, CUSTOMER'S POWER SUPPLY MUST BE PROPERLY GROUNDED.

NOTE: GROUNDING SCREW TO HAVE A GREEN COLORED SLOTTED AND/OR HEX HEAD NO SUBSTITUTES. USE #1005

NOTE: THE SURFACE OF THE INSULATED WIRES MARKED (X) TO BE COLORED GREEN, WITH OR WITHOUT ONE OR MORE YELLOW STRIPES.



POWER REQ'TS
 120 VOLTS
 1 PHASE
 60 HERTZ
 14 AMPS
 1680 WATTS



WIRING NOTE

ALL WIRES #14 AWG, TYPE SEW/SF2 MINIMUM UNLESS OTHERWISE NOTED

TO RE-ORDER ELEMENTS, SPECIFY		
DESCRIPTION	QTY	LOC
ELPMT10S	2	SIDES

R/H 2000
 SENTRY 2.0
 CFG 5
 2000° F

SWITCH BOX ASSY- 4611
 PARAGON INDUSTRIES, INC.
 2011 SOUTH TOWN EAST BLVD
 MESQUITE, TX 75149

REV	DATE	BY	DESCRIPTION
-	8-9-06	RLG	

WIRING DIAGRAM
 120V ,1 PHASE ,60HZ 1680WATTS

PART NO	REV
PMT10	-
8.5W X 8.75H X 9D	FILE