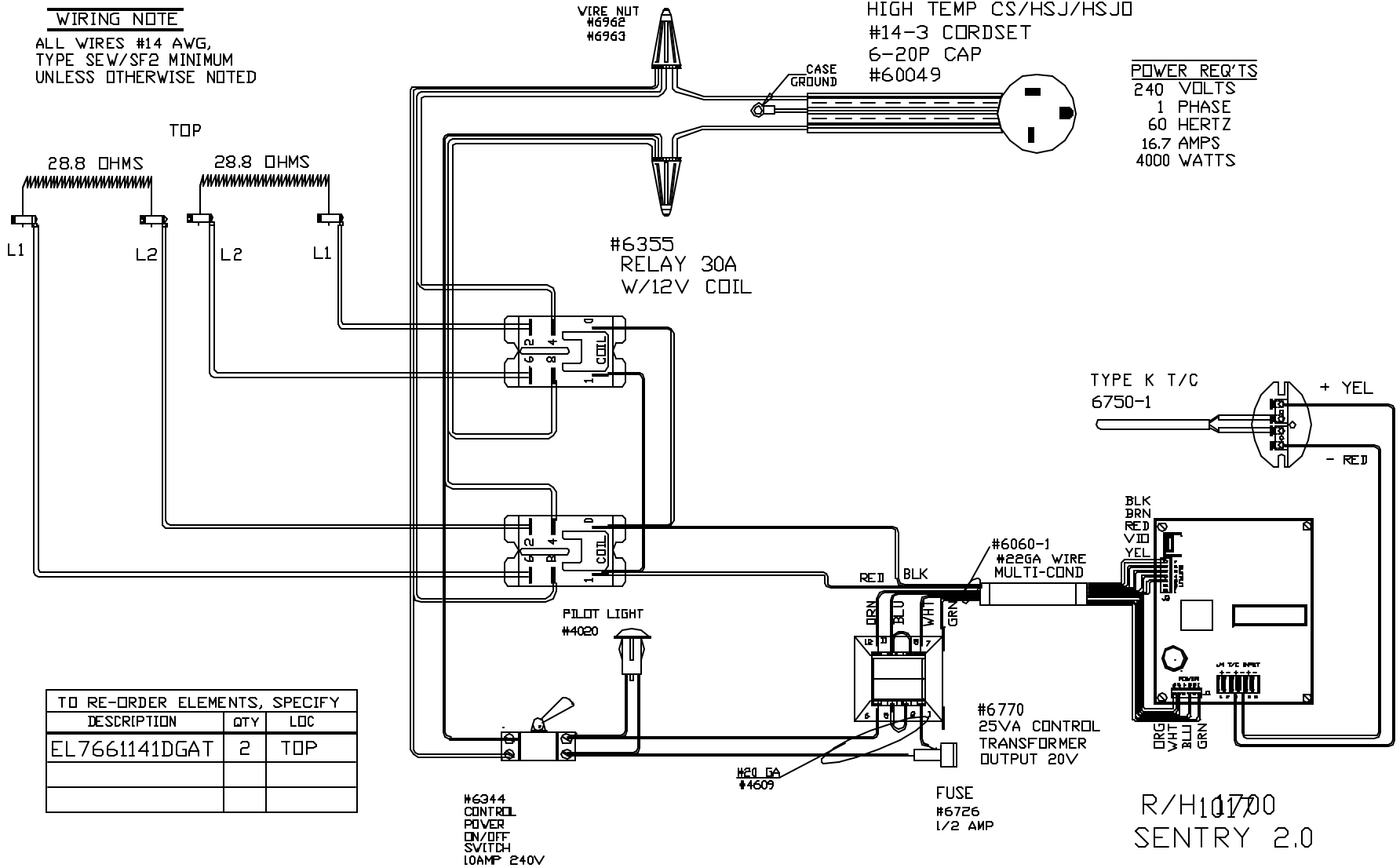


WIRING NOTE

ALL WIRES #14 AWG,
TYPE SEW/SF2 MINIMUM
UNLESS OTHERWISE NOTED

HIGH TEMP CS/HSJ/HSJD
#14-3 CORDSET
6-20P CAP
#60049

POWER REQ'TS
240 VOLTS
1 PHASE
60 HERTZ
16.7 AMPS
4000 WATTS



TO RE-ORDER ELEMENTS, SPECIFY		
DESCRIPTION	QTY	LOC
EL7661141DGAT	2	TOP

R/H10700
SENTRY 2.0

1700°F
CFG 5

BLUE

NOTE: PLEASE REFER
TO THIS NUMBER WHEN
ORDERING PARTS FOR
THIS KILN

REV	DATE	BY	DESCRIPTION
-	12/6/10	DTB	

SWITCH BOX ASSY- 42055-19
PARAGON INDUSTRIES
2011 SOUTH TOWN EAST BLVD
MESQUITE, TEXAS 75149

WIRING DIAGRAM
240V, 1 PHASE, 60HZ, 4000WATTS

PART NO.	REV
7661141DGA	-
18X18X9 PEARL	FILE