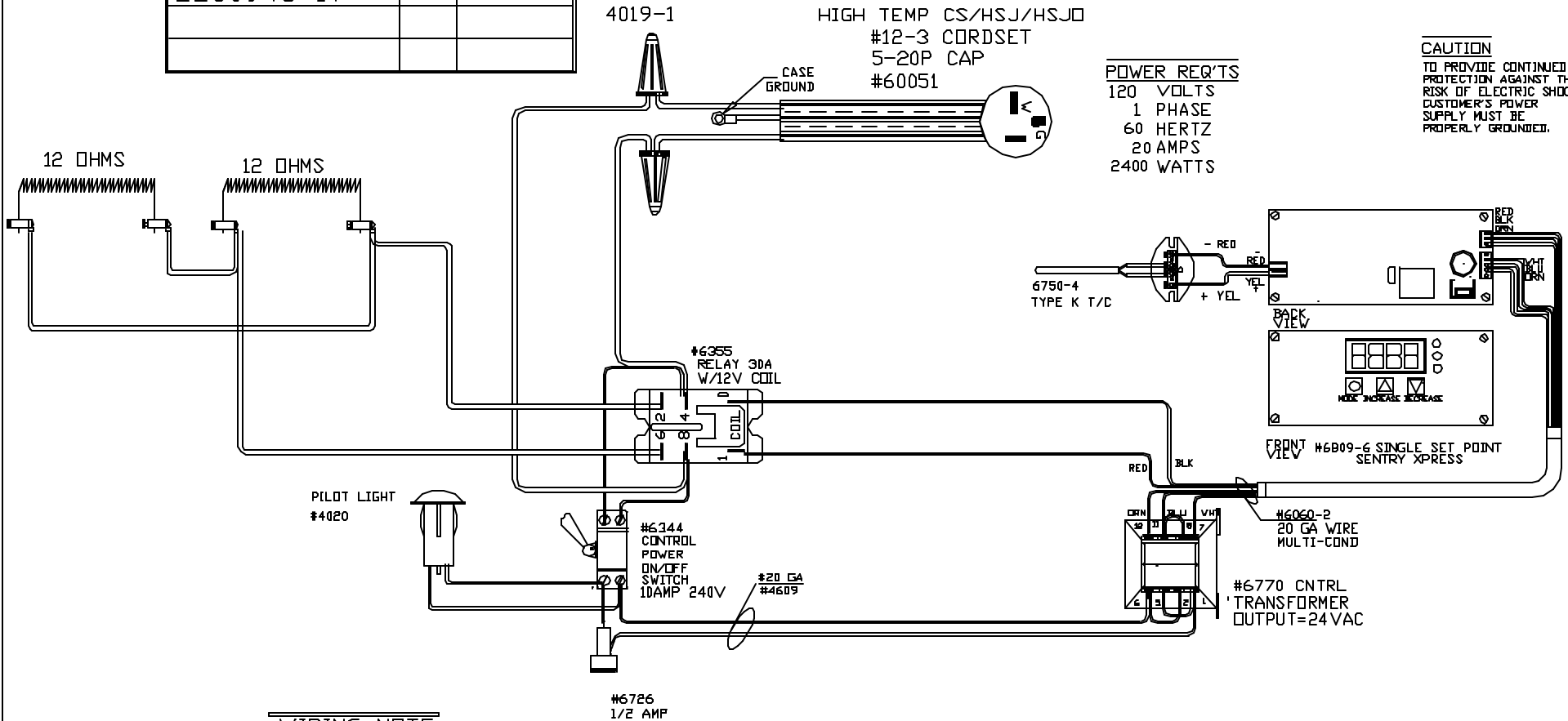


TO RE-ORDER ELEMENTS, SPECIFY		
DESCRIPTION	QTY	LOC
ELS0948-1T	2	TOP

4019-1 HIGH TEMP CS/HSJ/HSJD
#12-3 CORDSET
5-20P CAP
#60051

POWER REQ'TS
120 VOLTS
1 PHASE
60 HERTZ
20 AMPS
2400 WATTS

CAUTION
TO PROVIDE CONTINUED PROTECTION AGAINST THE RISK OF ELECTRIC SHOCK, CUSTOMER'S POWER SUPPLY MUST BE PROPERLY GROUNDIED.



WIRING NOTE

ALL WIRES #14 AWG,
TYPE SEW/SF2 MINIMUM
UNLESS OTHERWISE NOTED

CFG 1

MAX. TEMP.
1700°F

NOTE: PLEASE REFER TO THIS NUMBER WHEN ORDERING PARTS FOR THIS KILN

REV	DATE	BY	DESCRIPTION
-	7/18/05	DTB	

SWITCH BOX ASSY- 42090

PARAGON INDUSTRIES
2011 SOUTH TOWN EAST BLVD
MESQUITE, TEXAS 75149

WIRING DIAGRAM

120V ,1 PHASE ,60HZ 2400WATTS 11X13X11D

PART NO S0948-1

REV -
FILE