

**WIRING NOTE**

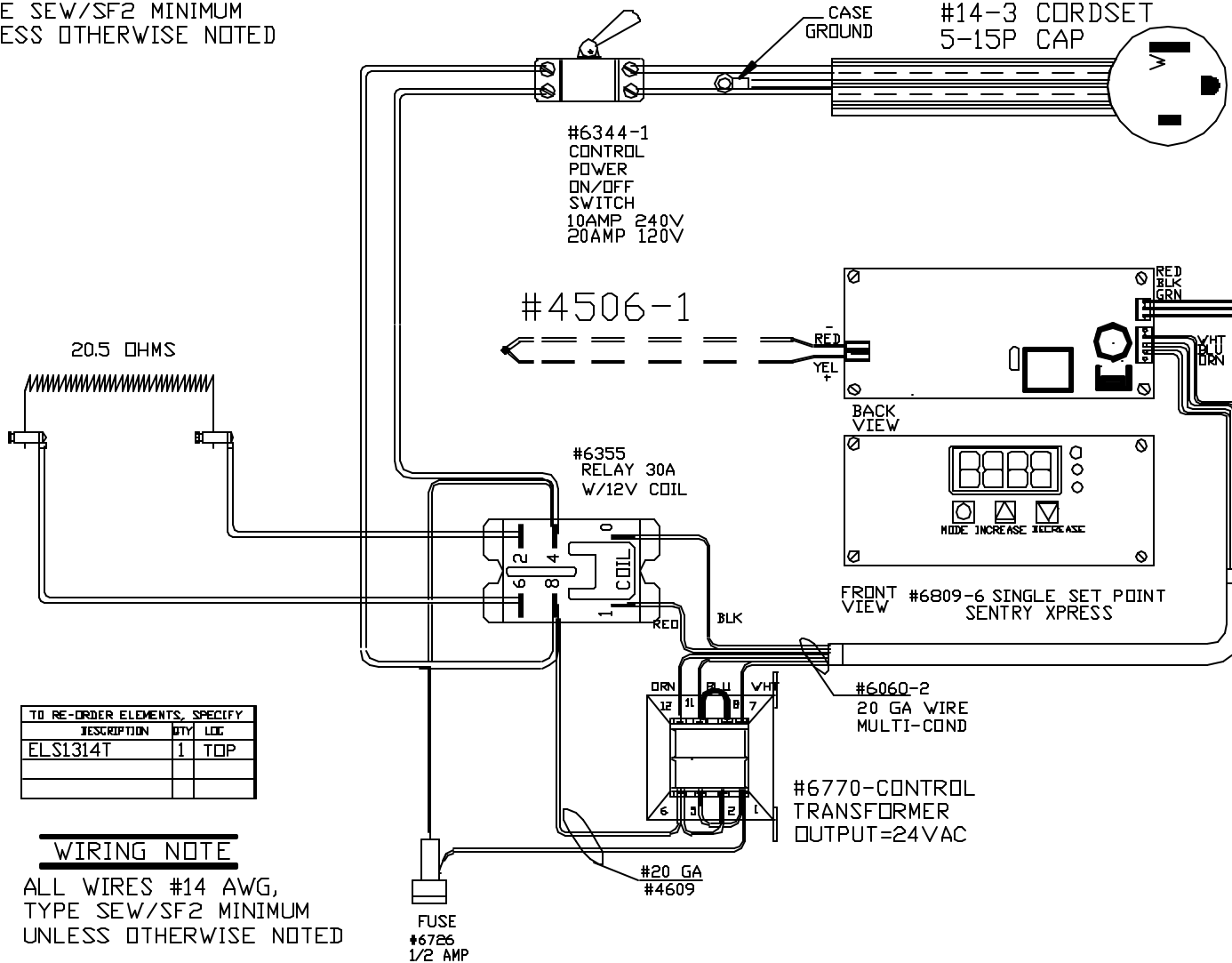
ALL WIRES #14 AWG,  
TYPE SEW/SF2 MINIMUM  
UNLESS OTHERWISE NOTED

HIGH TEMP CS/HSJ/HSJD

#60050  
#14-3 CORDSET  
5-15P CAP

**POWER REQ'TS**

120 VOLTS  
1 PHASE  
60 HERTZ  
20.5 AMPS  
700 WATTS



TO RE-ORDER ELEMENTS, SPECIFY		
DESCRIPTION	QTY	LOC
ELS1314T	1	TOP

**WIRING NOTE**

ALL WIRES #14 AWG,  
TYPE SEW/SF2 MINIMUM  
UNLESS OTHERWISE NOTED

CFG 1

BLUE

1200°F

REV	DATE	BY	DESCRIPTION
-	6/6/10	DTB	

SWITCH BOX ASSY- 42189-2

PARAGON INDUSTRIES  
2011 SOUTH TOWN EAST BLVD  
MESQUITE, TEXAS 75149

**WIRING DIAGRAM**

120V 1 PHASE 60HZ 700WATTS

PART NO.	REV
S1314	-
13X3X5 SSP BLUEBIRDJR	FILE