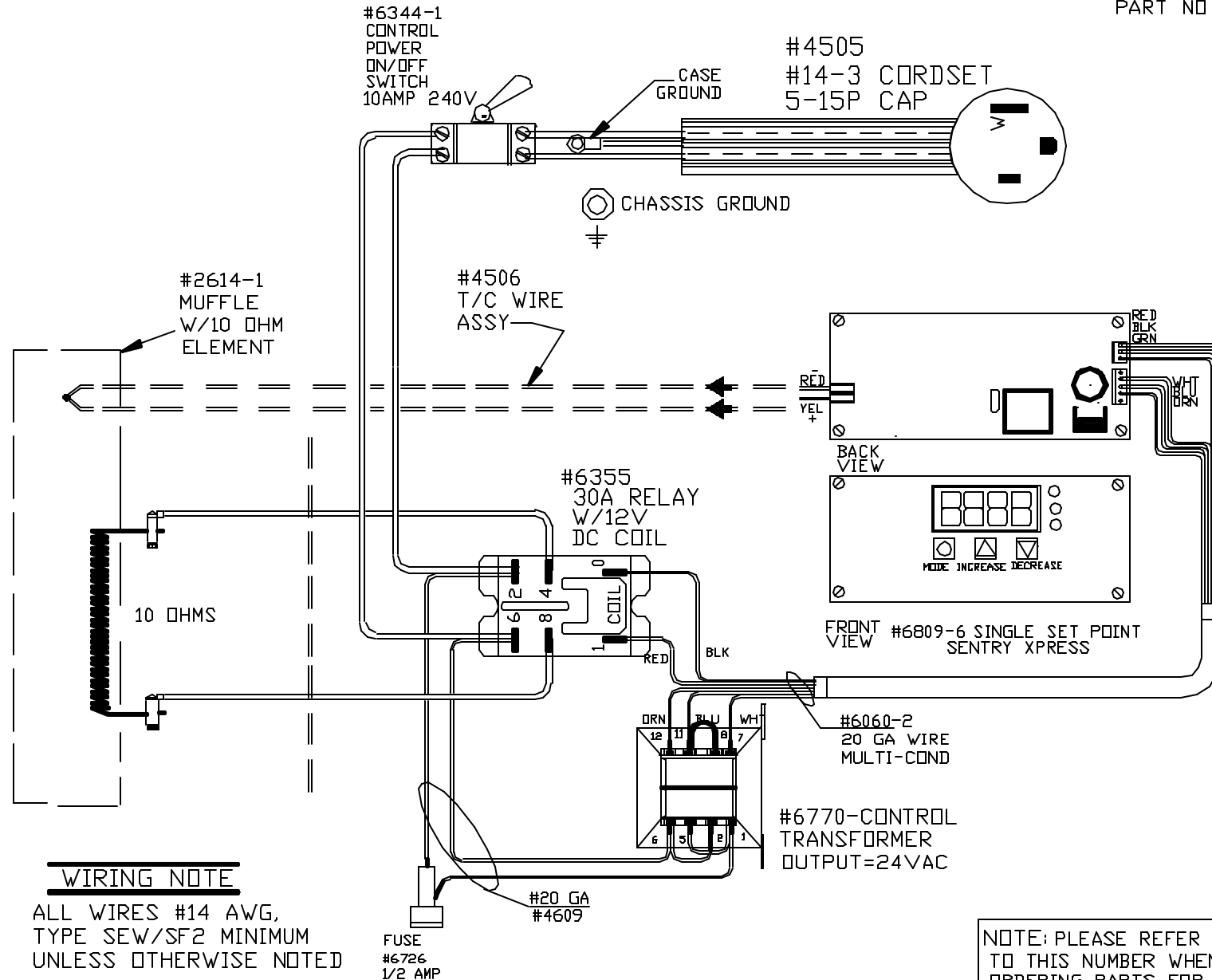


PART NO 0221131B00

POWER REQ'TS
 120 VOLTS
 1 PHASE
 60 HERTZ
 12 AMPS
 1440 WATTS



WIRING NOTE

ALL WIRES #14 AWG,
 TYPE SEW/SF2 MINIMUM
 UNLESS OTHERWISE NOTED

FUSE
 #6726
 1/2 AMP

#20 GA
 #4609

#6770-CONTROL
 TRANSFORMER
 OUTPUT=24VAC

#6060-2
 20 GA WIRE
 MULTI-COND

NOTE: PLEASE REFER
 TO THIS NUMBER WHEN
 ORDERING PARTS FOR
 THIS KILN

UL/CUL LISTED

PAINTED
 STEEL CASE
CATALOG STANDARD
 2000°F

REV	DATE	BY	DESCRIPTION
-	3-19-01	RLG	
A	11/29/01	DTB	CHG IN-LINE SV TO TOGGLE SV

SWITCH BOX ASSY- 40847-1

PARAGON INDUSTRIES
 2011 SOUTH TOWN EAST BLVD
 MESQUITE, TEXAS 75149

WIRING DIAGRAM

120V ,1 PHASE ,60HZ ,1440WATTS

PART NO	REV
0221131B00	A
SC2 W/SEN-SSP BD	FILE