

TO RE-ORDER ELEMENTS, SPECIFY		
DESCRIPTION	QTY	LOC
EL14611J1DTAS	2	SIDES

HIGH TEMP CS/HSJ/HSJD
 #12-3 CORDSET
 6-20P CAP
 #60049

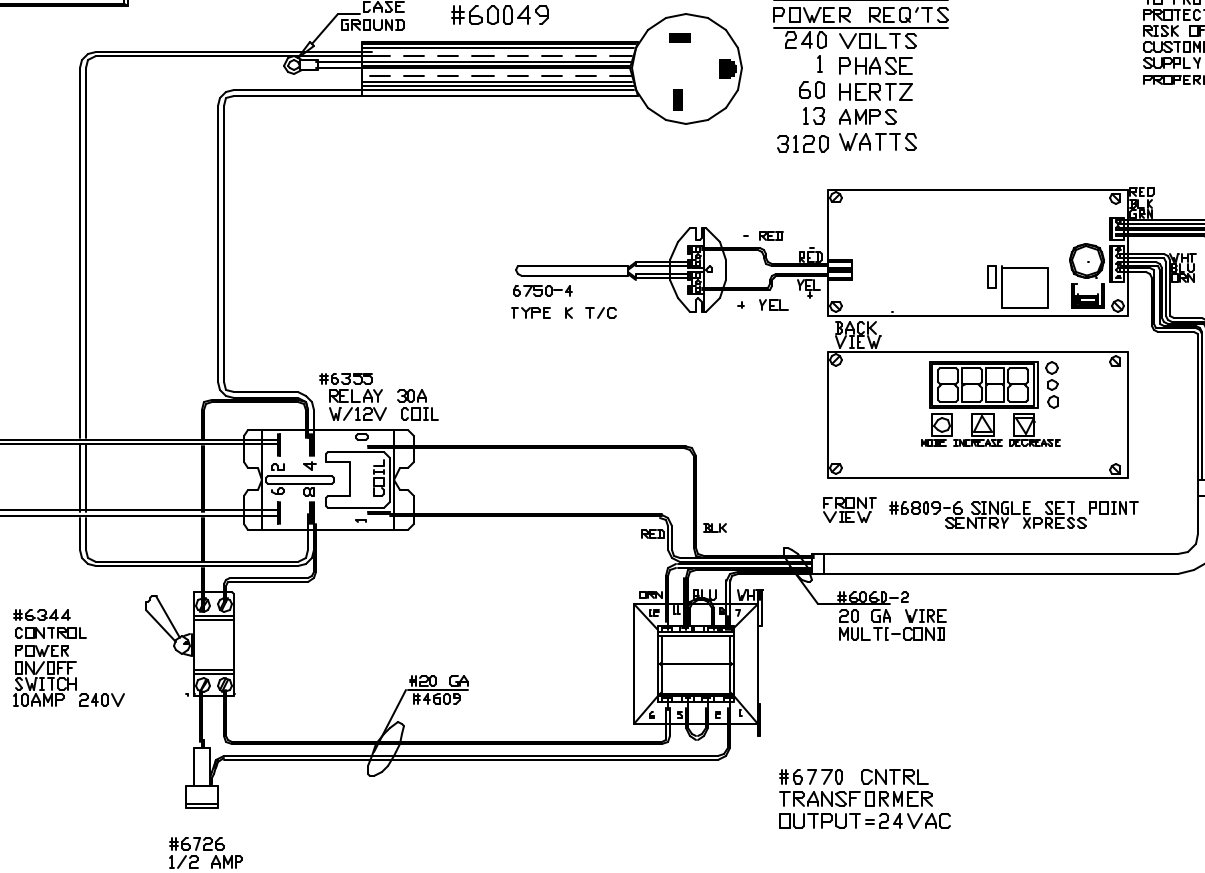
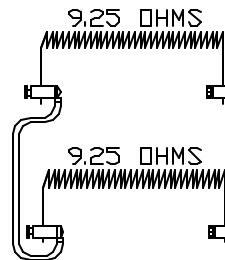
POWER REQ'TS
 240 VOLTS
 1 PHASE
 60 HERTZ
 13 AMPS
 3120 WATTS

CAUTION

TO PROVIDE CONTINUED PROTECTION AGAINST THE RISK OF ELECTRIC SHOCK, CUSTOMER'S POWER SUPPLY MUST BE PROPERLY GROUNDING.

WIRING NOTE

ALL WIRES #14 AWG, TYPE SEW/SF2 MINIMUM UNLESS OTHERWISE NOTED



NOTE: PLEASE REFER TO THIS NUMBER WHEN ORDERING PARTS FOR THIS KILN

CFG1

MAX. TEMP.
 2000°F

REV	DATE	BY	DESCRIPTION
-	7/20/04	DTB	

SWITCH BOX ASSY- 42071-1

PARAGON INDUSTRIES
 2011 SOUTH TOWN EAST BLVD
 MESQUITE, TEXAS 75149

WIRING DIAGRAM

240V, 1 PHASE 60HZ 3120WATTS

PART NO	REV
14611J1DTA	-
E14T EXPRESS SSP	FILE