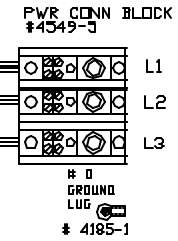


TO RE-ORDER ELEMENTS, SPECIFY		
DESCRIPTION	QTY	LOC
EL307111ETB	4	TOP/BOT
EL307111EM	2	MID

10 GA WIRE
SEW

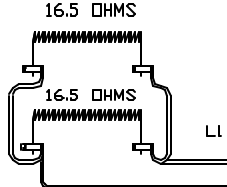


POWER REQ'TS
208 VOLTS
3 PHASE
60 HERTZ
44 AMPS
14400 WATTS

WIRE SIZES

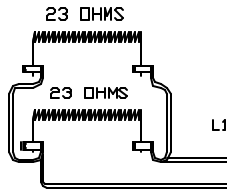
NOTE: ALL WIRES TO BE
TYPE SEW/SF2, #10 AWG
MINIMUM UNLESS NOTED

#6311
30A RELAY
208-240V
COIL
DPST-NO



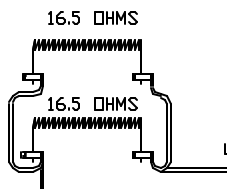
L1

L2



L1

L3



L2

L3

#6344-1
CONTROL
POWER
IN/OUT
SWITCH
UNF 240V

CONTROL WIRING NOTE
ALL CONTROL WIRES
#20 AWG #4609
UNLESS OTHERWISE NOTED

#20 GA
#4609

CAUTION

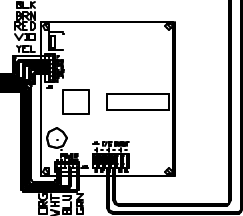
TO PROVIDE CONTINUED
PROTECTION AGAINST THE
RISK OF ELECTRIC SHOCK,
CUSTOMER'S POWER
SUPPLY MUST BE
PROPERLY GROUNDED.

#6355
3DA RELAY
V/12V
DC COIL

#6770-CONTROL
TRANSFORMER
OUTPUT=24VAC

FUSE #6726
1/2 AMP

TYPE K T/C
6750-1



CONE FIRE
SENTRY 2.0

2350°F

REV	DATE	BY	DESCRIPTION
-	11/19/01	DTB	
A	12/27/01	DTB	CORRECTED T/C

SWITCH BOX ASSY- 42017-2

PARAGON INDUSTRIES
2011 SOUTH TOWN EAST BLVD
MESQUITE, TEXAS 75149

WIRING DIAGRAM

208V, 3 PHASE, 60HZ, 14400WATTS

PART NO. 307111EA00

VIK283-SEN-C

REV A