

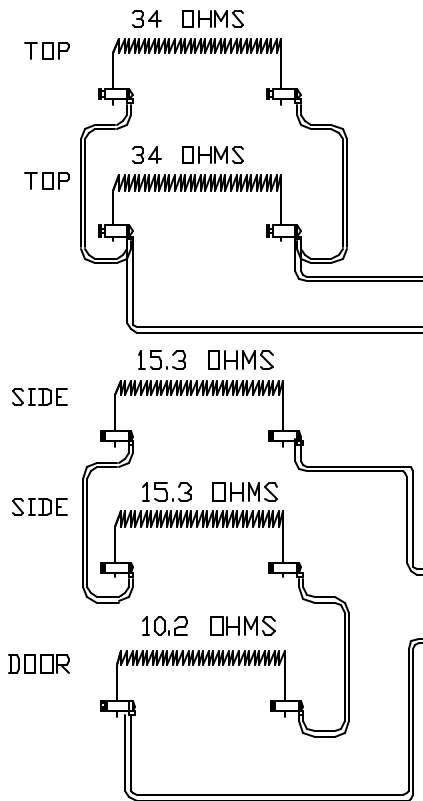
PART NO 7561234DGA

**WIRING NOTE**

ALL WIRES #14 AWG,  
TYPE SEW/SF2 MINIMUM  
UNLESS OTHERWISE NOTED

#12-3 CORDSET  
6-20P CAP  
#4016

**POWER REQ'TS**  
240 VOLTS  
1 PHASE  
60 HERTZ  
20 AMPS  
4800 WATTS



#12 SEW/SF2  
WIRE #4184

CASE  
GROUND

DOOR OPER'D  
POWER CUT-OFF  
SWITCH-#4135

#6355  
RELAY 30A  
W/12V COIL

#20 GA  
#4609

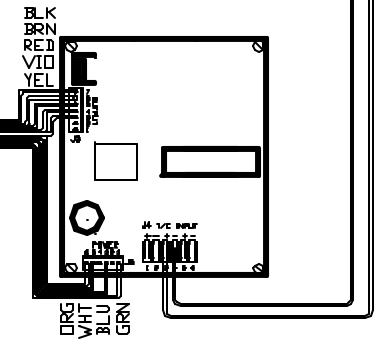
TYPE K T/C  
6750-1

+ YEL

- RED

#6060-1  
#22GA WIRE  
MULTI-COND

#6770  
25VA CONTROL  
TRANSFORMER  
OUTPUT 20V



#6344-1  
CONTROL  
POWER  
ON/OFF  
SWITCH  
10AMP 240V

FUSE  
#6726  
1/2 AMP

1020  
SENTRY 2.0

TO RE-ORDER ELEMENTS, SPECIFY		
DESCRIPTION	QTY	LOC
EL7561234DGAT	2	TOP
EL7561234DGAS	2	SIDE
EL7561234DGAD	1	DOOR

NOTE: PLEASE REFER  
TO THIS NUMBER WHEN  
ORDERING PARTS FOR  
THIS KILN

CFG 5  
PAINTED  
STEEL CASE  
2000°F

REV	DATE	BY	DESCRIPTION
-	3/1/04	DTB	

SWITCH BOX ASSY- 40989-7  
PARAGON INDUSTRIES  
2011 SOUTH TOWN EAST BLVD  
MESQUITE, TEXAS 75149

WIRING DIAGRAM  
240V, 1 PHASE, 60HZ, 4800WATTS

PART NO 7561234DGA  
GL18-1020

REV -  
FILE