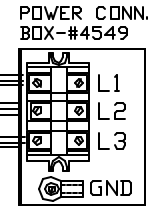
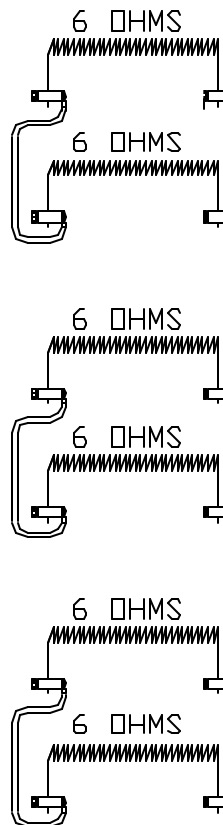


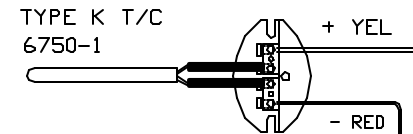
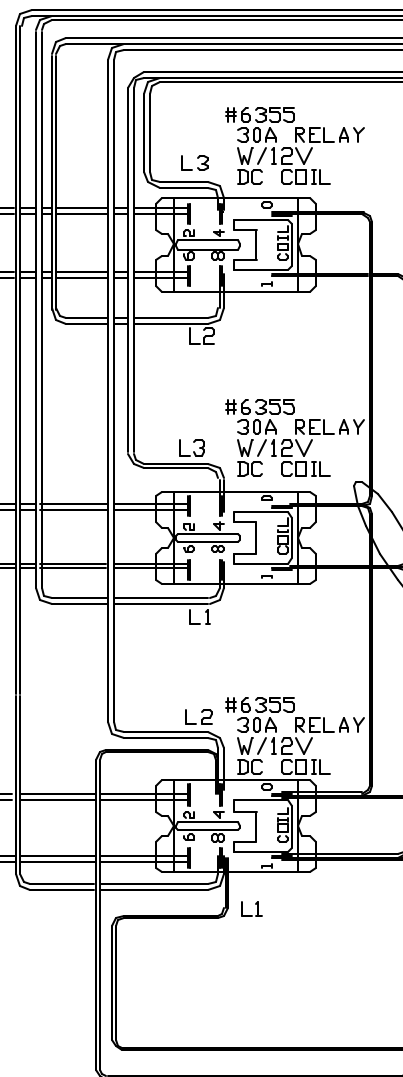
PART NO 797111A00



POWER REQ'TS
 208 VOLTS
 3 PHASE
 60 HERTZ
 30 AMPS/LINE
 10800 WATTS

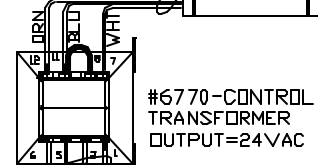
CAUTION
 TO PROVIDE CONTINUED PROTECTION AGAINST THE RISK OF ELECTRIC SHOCK, CUSTOMER'S POWER SUPPLY MUST BE PROPERLY GROUNDED.

WIRING NOTE
 ALL WIRES #14 AWG, TYPE SEW/SF2 MINIMUM UNLESS OTHERWISE NOTED

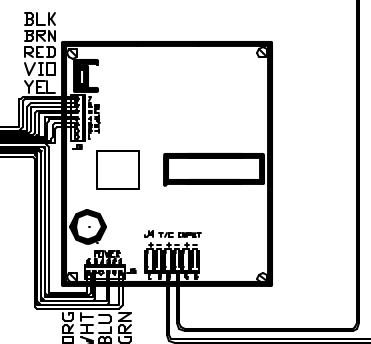


#20 GA #4609

#6060-1 #22GA WIRE MULTI-COND



FLUSE #6726 1/2 AMP



CONE FIRE SENTRY 2.0 CFG 21 2350° F

TO RE-ORDER ELEMENTS, SPECIFY		
DESCRIPTION	QTY	LOC
EL7971111TBM	6	TOP,BOT &MID

REV	DATE	BY	DESCRIPTION
-	4/14/05	DTB	-

SWITCH BOX ASSY- 42022-3

PARAGON INDUSTRIES
 2011 SOUTH TOWN EAST BLVD
 MESQUITE, TEXAS 75149

WIRING DIAGRAM

208V, 3 PHASE, 60HZ 10800WATTS

PART NO.	REV
797111A00	-
TNF-24-3	FILE