

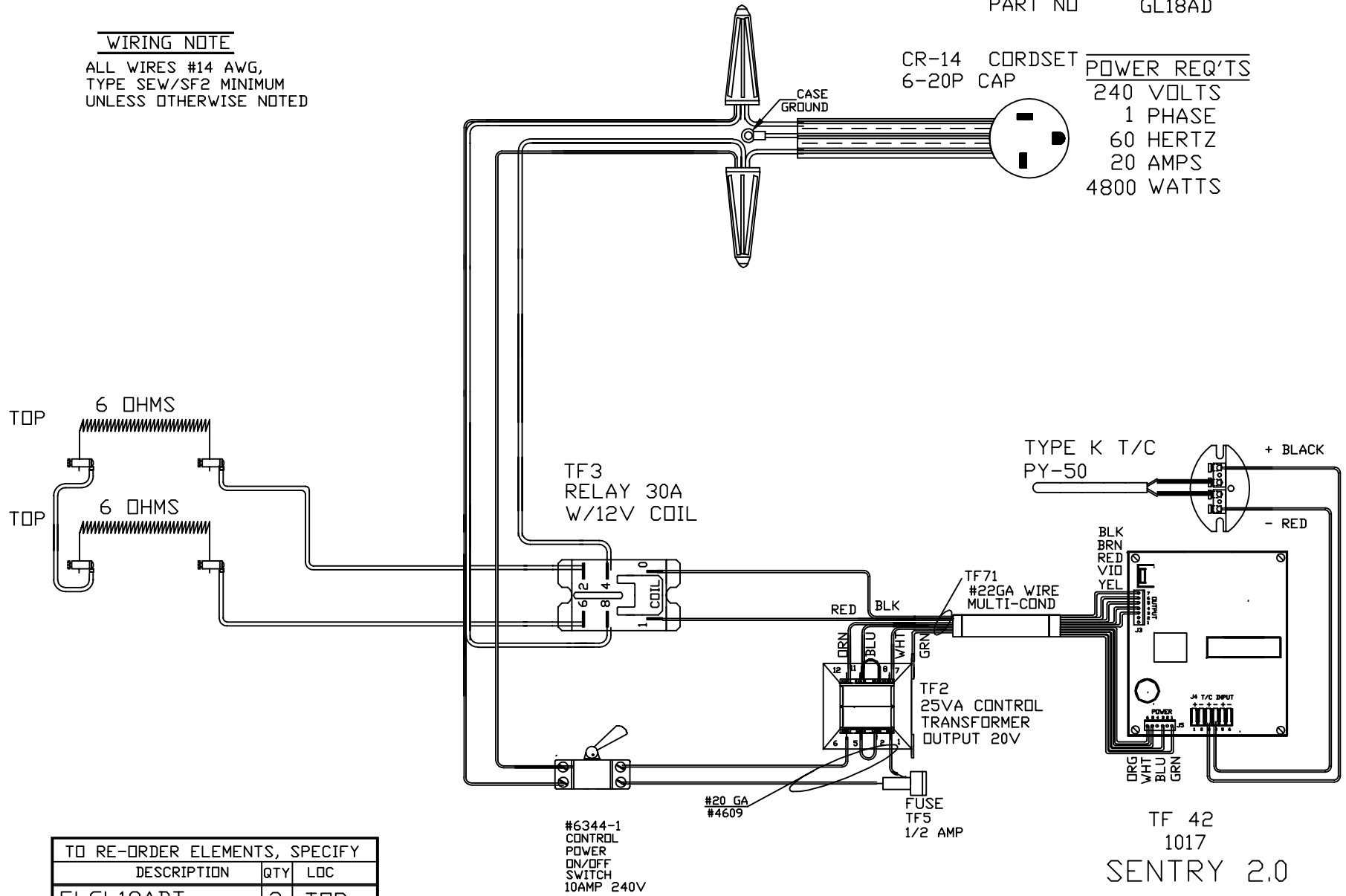
PART NO GL18AD

WIRING NOTE

ALL WIRES #14 AWG,
TYPE SEW/SF2 MINIMUM
UNLESS OTHERWISE NOTED

CR-14 CORDSET
6-20P CAP

POWER REQ'TS
240 VOLTS
1 PHASE
60 HERTZ
20 AMPS
4800 WATTS



TO RE-ORDER ELEMENTS, SPECIFY

DESCRIPTION	QTY	LOC
ELGL18ADT	2	TOP

N/C
PAINTED
STEEL CASE
1700°F

REV	DATE	BY	DESCRIPTION
-	2/13/01	DTB	

SWITCH BOX ASSY-
PARAGON INDUSTRIES
2011 SOUTH TOWN EAST BLVD
MESQUITE, TEXAS 75149

WIRING DIAGRAM
240 V1 PHASE ,60 HZ 4800 WATTS

PART NO.	REV
GL18AD	-
GL18AD	FILE