

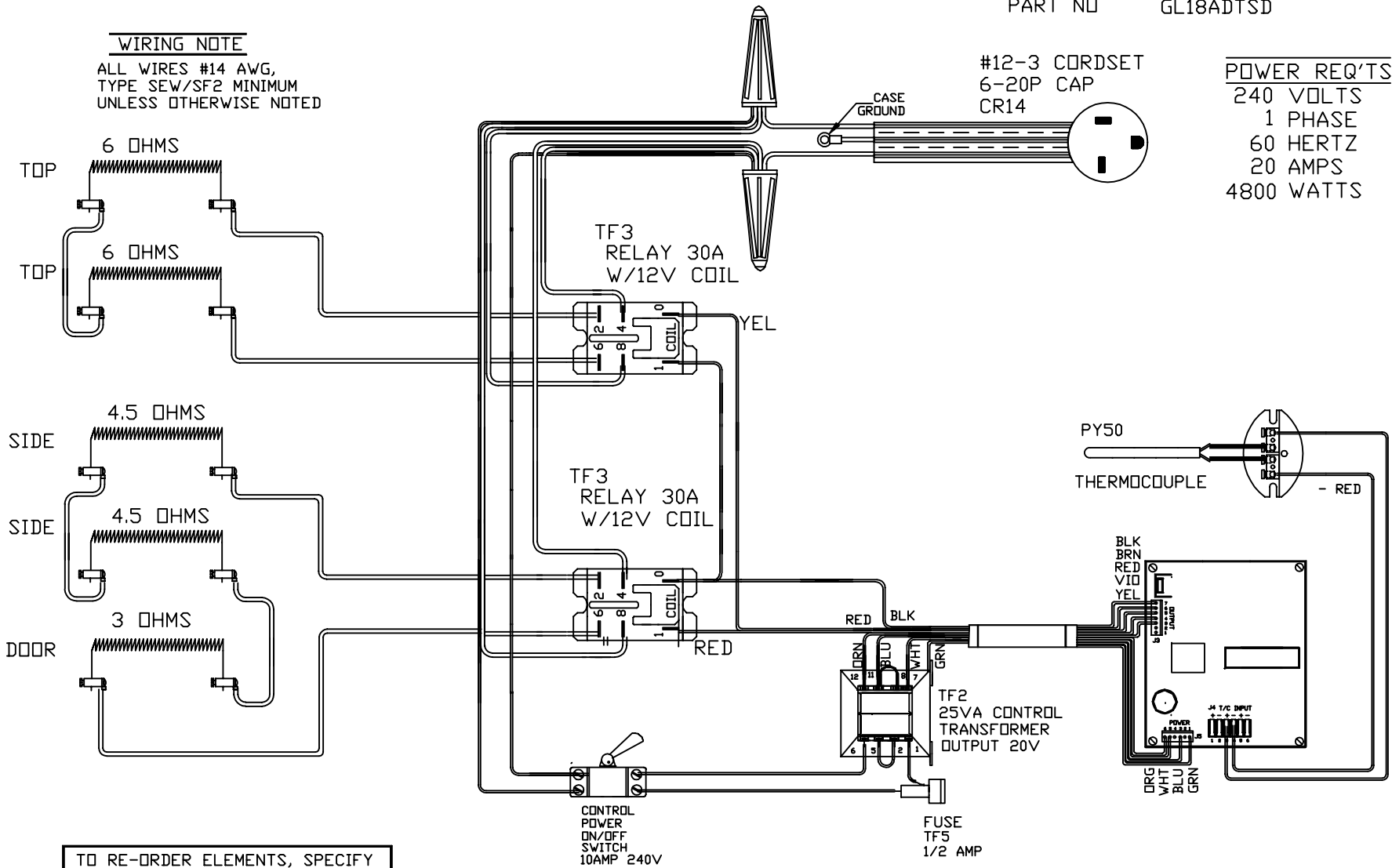
PART NO GL18ADTSD

**WIRING NOTE**

ALL WIRES #14 AWG,  
TYPE SEW/SF2 MINIMUM  
UNLESS OTHERWISE NOTED

#12-3 CORDSET  
6-20P CAP  
CR14

**POWER REQ'TS**  
240 VOLTS  
1 PHASE  
60 HERTZ  
20 AMPS  
4800 WATTS



TO RE-ORDER ELEMENTS, SPECIFY

DESCRIPTION	QTY	LOC
ELGL18ADTSDT	2	TOP
ELGL18ADTSDS	2	SIDE
ELGL18ADTSDD	1	DOOR

SENTRY 2.0

REV	DATE	BY	DESCRIPTION
-	6-6-02	RLG	

SWITCH BOX ASSY-

PARAGON INDUSTRIES  
2011 SOUTH TOWN EAST BLVD  
MESQUITE, TEXAS 75149

WIRING DIAGRAM

240V, 1PHASE, 60HZ, 4800WATTS

PART NO.	REV
GL18ADTSD	-
GL18-TS&D	FILE