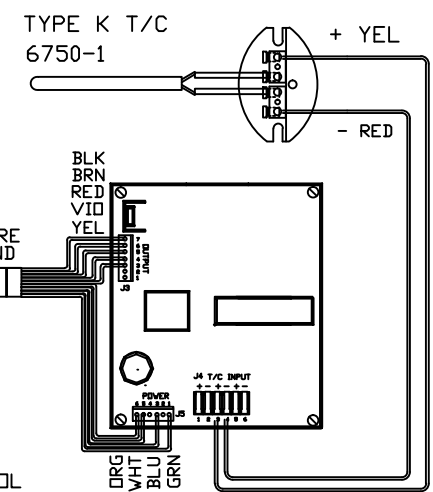
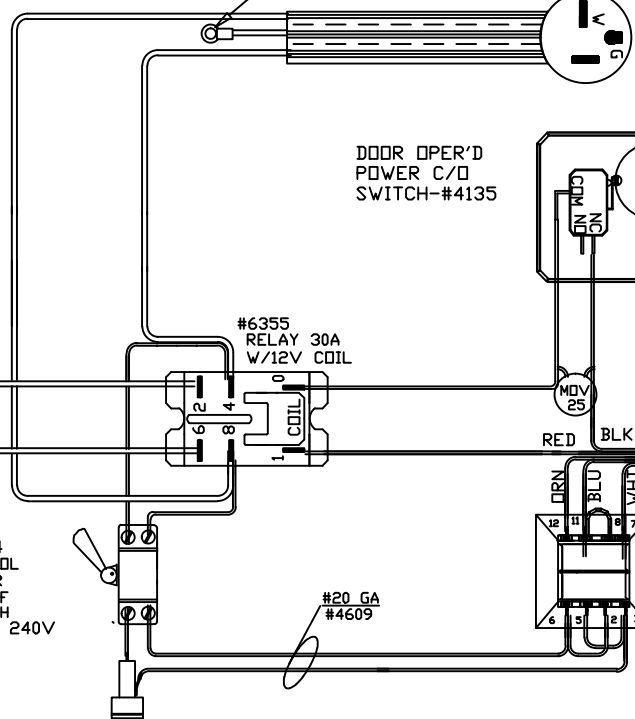
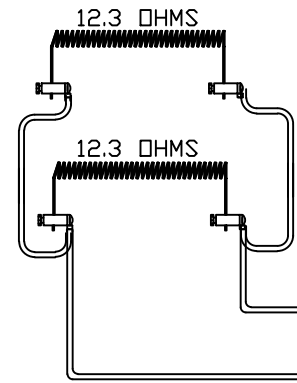


HIGH TEMP CS/HSJ/HSJD  
 #14-3 CORDSET  
 5-20P CAP  
 #60051

POWER REQ'TS  
 120 VOLTS  
 1 PHASE  
 60 HERTZ  
 20 AMPS  
 2340 WATTS

CAUTION  
 TO PROVIDE CONTINUED  
 PROTECTION AGAINST THE  
 RISK OF ELECTRIC SHOCK,  
 CUSTOMER'S POWER  
 SUPPLY MUST BE  
 PROPERLY GROUNDED.



WIRING NOTE  
 ALL WIRES #14 AWG,  
 TYPE SEW/SF2 MINIMUM  
 UNLESS OTHERWISE NOTED

#6344  
 CONTROL  
 POWER  
 ON/OFF  
 SWITCH  
 10AMP 240V

#20 GA  
 #4609

#6726  
 1/2 AMP

TO RE-ORDER ELEMENTS, SPECIFY		
DESCRIPTION	QTY	LOC
ELPMT10-11S	2	SIDES

SENTRY 2.0

CFG 5  
 2350°F  
 TILT  
 BLUE

NOTE: PLEASE REFER  
 TO THIS NUMBER WHEN  
 ORDERING PARTS FOR  
 THIS KILN

REV	DATE	BY	DESCRIPTION
-	8/26/13	DTB	

SWITCH BOX ASSY- 42254-2  
 PARAGON INDUSTRIES  
 2011 SOUTH TOWN EAST BLVD  
 MESQUITE, TEXAS 75149

WIRING DIAGRAM  
 120V 1 PHASE 60HZ 2340 W

PART NO.	REV
PMT10-11	-
TNF E10	FILE