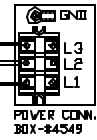


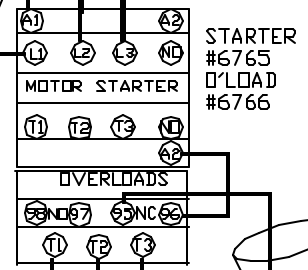
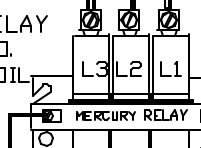
REVISION	



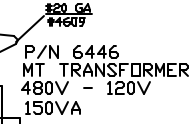
**POWER REQ'TS**  
 480 VOLTS  
 3 PHASE- DELTA  
 60 HERTZ  
 20.1 AMPS/LINE  
 16700 WATTS

#12 SEV/SFB  
 WIRE #4184

P/N 6383  
 35 AMP RELAY  
 3PST - N.O.  
 W/120V COIL

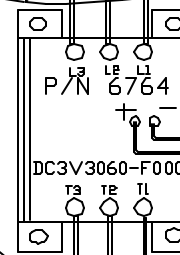


STARTER  
 #6765  
 O'LOAD  
 #6766



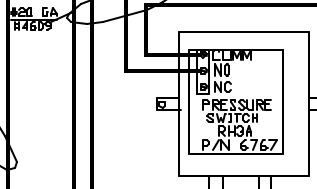
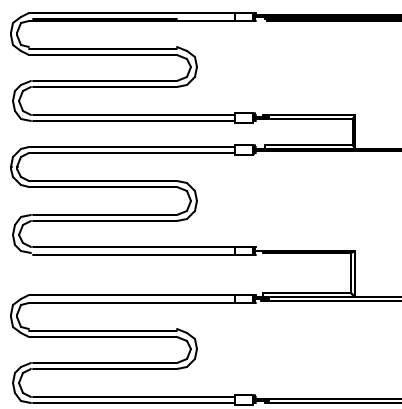
P/N 6446  
 MT TRANSFORMER  
 480V - 120V  
 150VA

#12 SEV/SFB  
 WIRE #4184



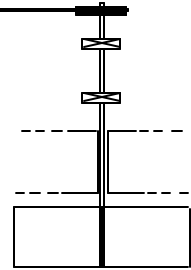
#12 SEV/SFB  
 WIRE #4184

ELEMENTS  
 ELS0445

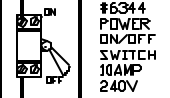


NO  
 NC  
 PRESSURE  
 SWITCH  
 RH3A  
 P/N 6767

#6834  
 RECIRC FAN  
 MOTOR- 1/4HP  
 1725 RPM-480V  
 3PH-60HZ



FLUX  
 5 AMPS  
 #6255



#6344  
 POWER  
 ON/OFF  
 SWITCH  
 10AMP  
 240V

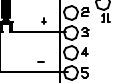
P/N 6768  
 TYPE J T/C

P/N 661B  
 PROGRAMMABLE  
 CONTROLLER  
 989A-10FA-JARG



P/N 6768  
 TYPE J T/C

P/N 6763  
 HIGH LIMIT CONTROLLER  
 WATLOW  
 365C-D601-1000



#20 GA  
 #4609

500° F

SW BOX # 40305		
DRAWN	R. GIESELMAN	01/09/96
REVIEW	N. MONTESINDO	
APPVD		

**TOLERANCE**  
 (UNLESS OTHERWISE SPECIFIED)  
 DECIMAL .XXX +/- .005  
 .XX +/- .05  
 ANGLE +/- 1 DEG.  
 FRACTION +/- 1/16

PARAGON INDUSTRIES  
 2011 SOUTH TOWN EAST BLVD  
 MESQUITE, TEXAS 75149

PART NUMBER	S0445	REV.	A
DESCRIPTION	WIRING DIAGRAM 24x24x48 OVEN		