

PART NO S0720-1

**CAUTION**

TO PROVIDE CONTINUED PROTECTION AGAINST THE RISK OF ELECTRIC SHOCK, CUSTOMER'S POWER SUPPLY MUST BE PROPERLY GROUNDED.

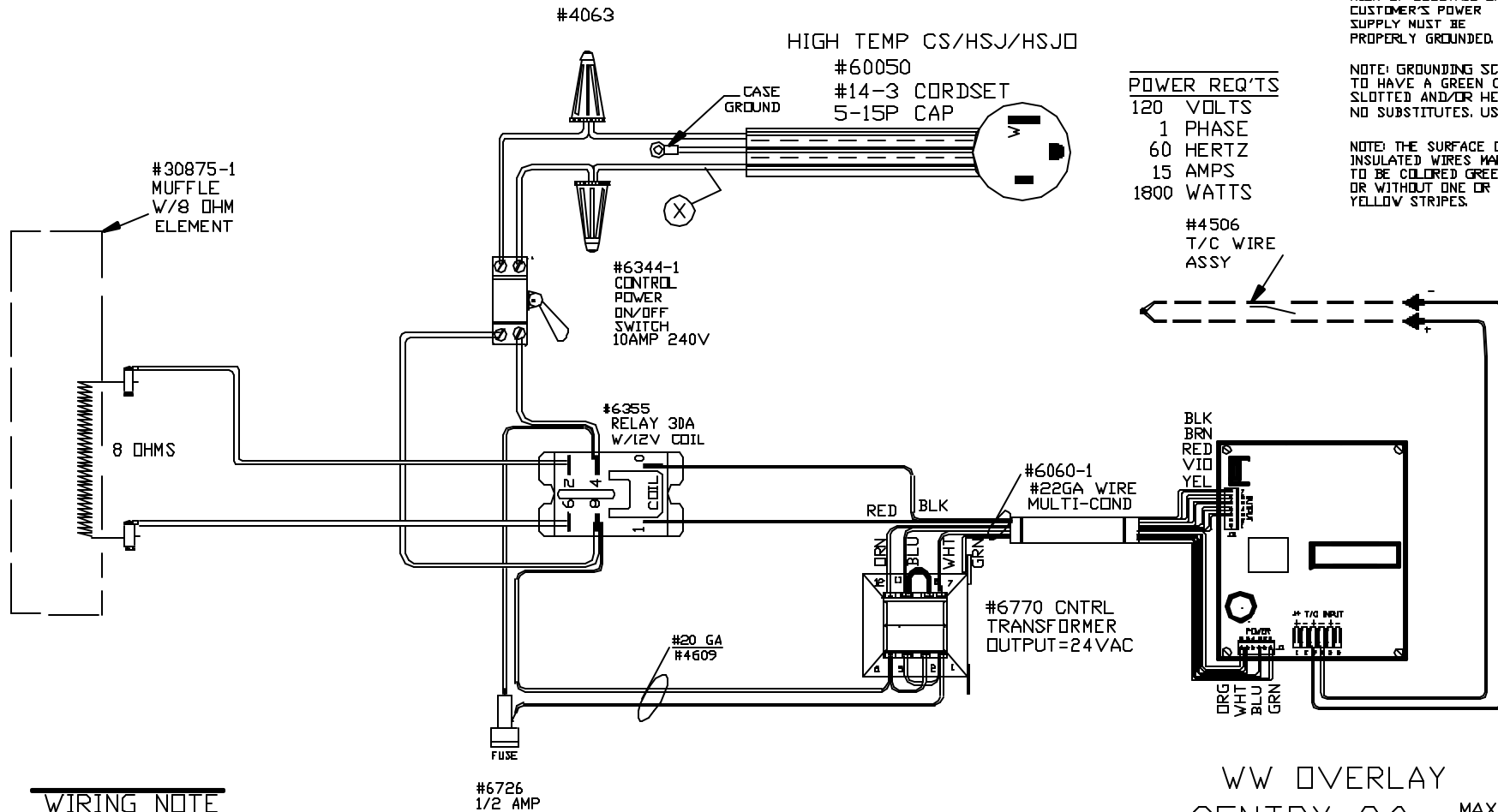
NOTE: GROUNDING SCREW TO HAVE A GREEN COLORED SLOTTED AND/OR HEX HEAD NO SUBSTITUTES. USE #1005

NOTE: THE SURFACE OF THE INSULATED WIRES MARKED ⊗ TO BE COLORED GREEN, WITH OR WITHOUT ONE OR MORE YELLOW STRIPES.

**POWER REQ'TS**

120 VOLTS  
1 PHASE  
60 HERTZ  
15 AMPS  
1800 WATTS

#4506  
T/C WIRE  
ASSY



WW OVERLAY  
SENTRY 2.0 MAX. TEMP.  
1700°F  
CFG 389

**WIRING NOTE**

ALL WIRES #14 AWG,  
TYPE SEW/SF2 MINIMUM  
UNLESS OTHERWISE NOTED

REV	DATE	BY	DESCRIPTION
-	8/1/03	DTB	
A	11/11/03	DTB	CHG CS TO H TEMP ADDED CFG CODE

SWITCH BOX ASSY- 42002

PARAGON INDUSTRIES  
2011 SOUTH TOWN EAST BLVD  
MESQUITE, TEXAS 75149

**WIRING DIAGRAM**

120V 1 PHASE 60HZ 1800WATTS

PART NO.	REV
S0720-1	A
KL 10.5X7X10.5 MFLE	FILE