

**CAUTION**

TO PROVIDE CONTINUED PROTECTION AGAINST THE RISK OF ELECTRIC SHOCK, CUSTOMER'S POWER SUPPLY MUST BE PROPERLY GROUNDED.

NOTE: GROUNDING SCREW TO HAVE A GREEN COLORED SLOTTED AND/OR HEX HEAD NO SUBSTITUTES. USE #1005

NOTE: THE SURFACE OF THE INSULATED WIRES MARKED (X) TO BE COLORED GREEN, WITH OR WITHOUT ONE OR MORE YELLOW STRIPES.

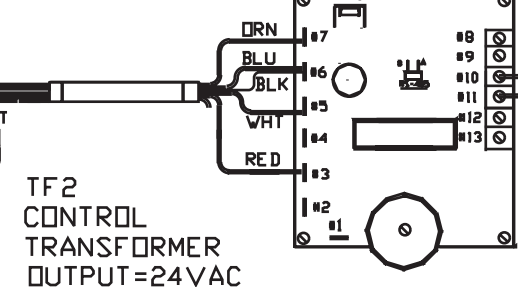
**WIRE SIZES**

NOTE: ALL WIRES TO BE TYPE SEW/SF2, #14 AWG MINIMUM UNLESS NOTED

CR6  
6-2/8-1 CORDSET  
6-50P CAP

**POWER REQ'TS**  
240 VOLTS  
1 PHASE  
60 HERTZ  
30 AMPS  
7200 WATTS  
MAX TEMP 2350°F

PY50  
TYPE K T/C



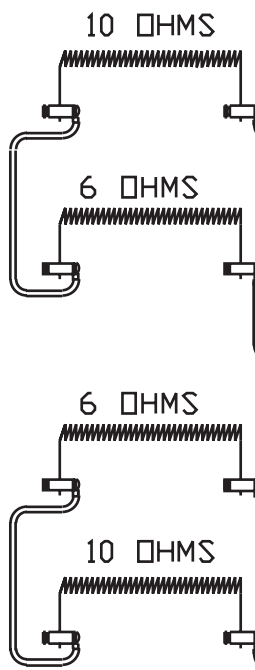
TF21  
DTC 1000C

UL/CUL LISTED

TF2  
CONTROL  
TRANSFORMER  
OUTPUT=24VAC

TF3  
30A RELAY  
W/12V  
DC COIL

TF3  
30A RELAY  
W/12V  
DC COIL



1/2 AMP FUSE

TO RE-ORDER ELEMENTS, SPECIFY		
DESCRIPTION	QTY	LOC
ELTNF82TB	2	TOP&BOT
ELTNF82M	2	MIDDLE

COMMENTS

PARAGON INDUSTRIES  
2011 SOUTH TOWN EAST BLVD  
MESQUITE, TEXAS 75149

**PRODUCT DESCRIPTION**  
8 SIDES, 16.5" DIA, 22.25" DP  
240V, 1PH, 60HZ, 30A, 7200W

PART NO.	TNF823	REV	-
WIRING DIAGRAM			