

10 GA WIRE  
SEW

#6073 FUSE BLOCK (2 EA)  
600V 30A 3P  
USES (6) 30A  
CLASS CC FUSES #TF34

PWR CONN BLOCK

L1

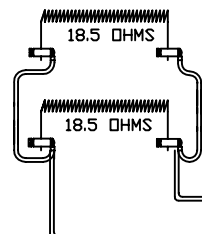
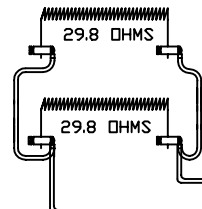
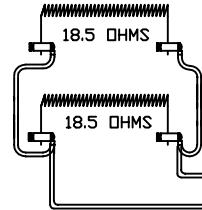
L2

# 0  
GROUND  
LUG  
# 4185-1

WIRE SIZES

NOTE: ALL WIRES TO BE  
TYPE SEW/SF2, #10 AWG  
MINIMUM UNLESS NOTED

#TF26  
30A RELAY  
208-240V  
COIL  
DPST-NO



CONTROL WIRING NOTE

ALL CONTROL WIRES  
#20 AWG #4609  
UNLESS OTHERWISE NOTED

POWER REQ'TS

240 VOLTS  
1 PHASE  
60 HERTZ  
68 AMPS  
16225 WATTS

CAUTION

TO PROVIDE CONTINUED  
PROTECTION AGAINST THE  
RISK OF ELECTRIC SHOCK,  
CUSTOMER'S POWER  
SUPPLY MUST BE  
PROPERLY GROUNDED.

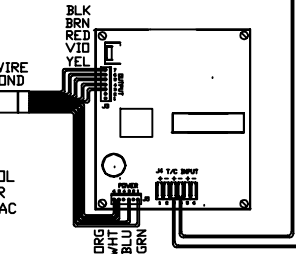
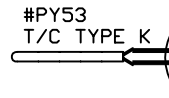
#20 GA  
#4609

#6344-1  
CONTROL  
POWER  
ON/OFF  
SWITCH  
10AMP 240V

FUSE  
#TF5  
1/2 AMP

#TF3  
30A RELAY  
W/12V  
DC COIL

#20 GA  
#4609



T/C EXT WIRE

SENTRY 2.0 #TF40  
CONE FIRE

TO RE-ORDER ELEMENTS, SPECIFY		
DESCRIPTION	QTY	LDC
EL DRAGONSTB	4	SIDE:TOP/BOT
EL DRAGONSM	2	SIDE:MID

REV	DATE	BY	DESCRIPTION
-	1-8-02	RLG	

SWITCH BOX ASSY-  
PARAGON INDUSTRIES  
2011 SOUTH TOWN EAST BLVD  
MESQUITE, TEXAS 75149

WIRING DIAGRAM  
240V, 1 PHASE, 60HZ, 16225WATTS

PART NO.	REV
DRAGON 24	-
DRAGON 242724	

2350°F