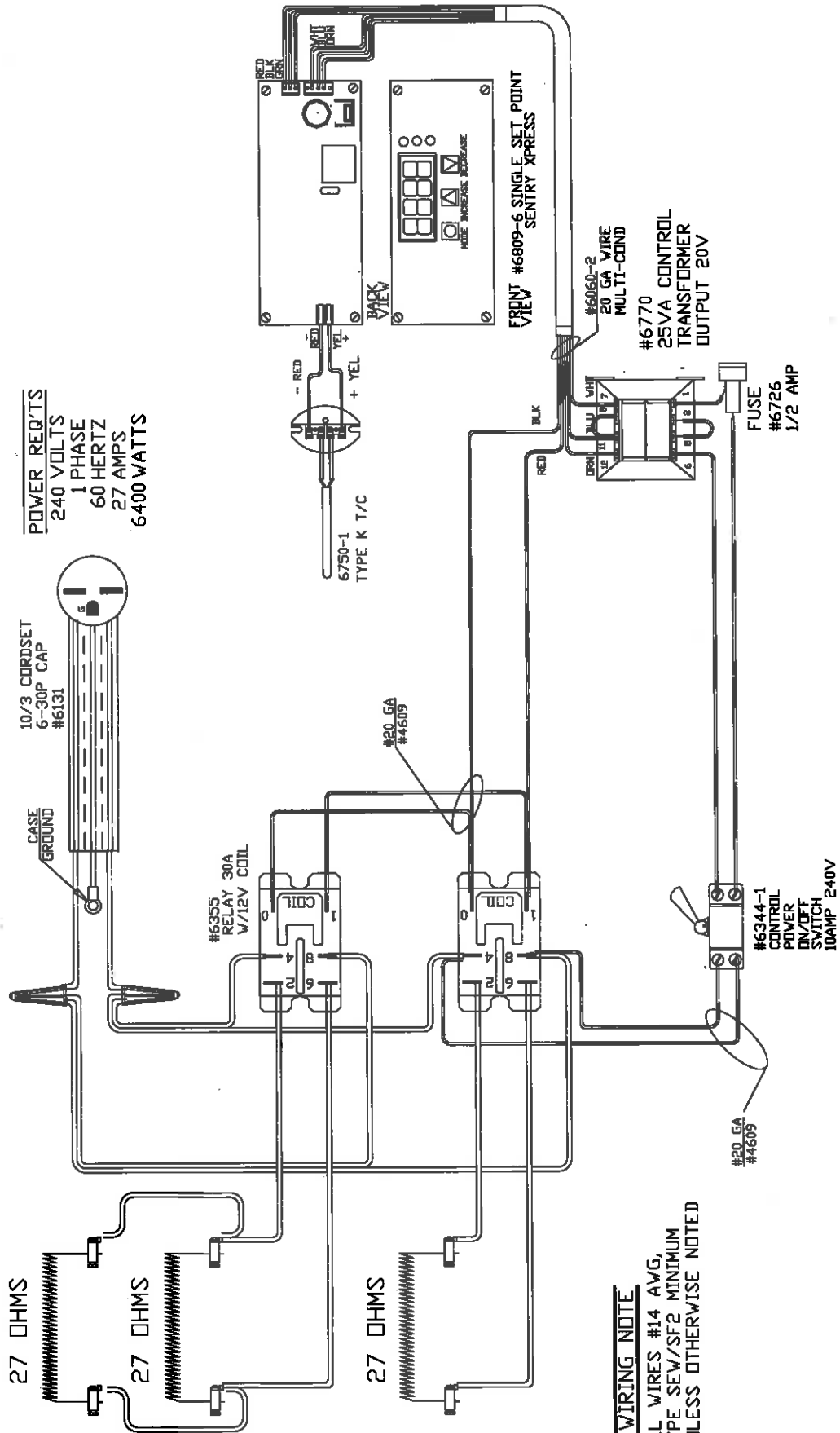
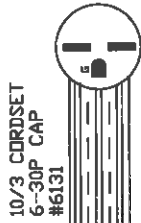


PART NO 86611J1E00

4019-1



POWER REQ'TS
 240 VOLTS
 1 PHASE
 60 HERTZ
 27 AMPS
 6400 WATTS



CASE GROUND

#6355 RELAY 30A V/12V COIL

#20 GA #4609

6750-1 TYPE K T/C

FRONT VIEW #6809-6 SINGLE SET POINT SENTRY X-PRESS

#6060-2 20 GA WIRE MULTI-COND

#6770 25VA CONTROL TRANSFORMER OUTPUT 20V

FUSE #6726 1/2 AMP

#6344-1 CONTROL POWER ON/OFF SWITCH 10AMP 240V

WIRING NOTE

ALL WIRES #14 AWG, TYPE SEW/SF2 MINIMUM UNLESS OTHERWISE NOTED

TO RE-ORDER ELEMENTS, SPECIFY DESCRIPTION	QTY	LOC
EL 86611J1E00 TBM	3	TOP, BOT & MID

CFG 3
 2350° F
 TUV CERTIFIED

NOTE: PLEASE REFER TO THIS NUMBER WHEN ORDERING PARTS FOR THIS KILN

REV	DATE	BY	DESCRIPTION	PART. NO.	REV	FILE
1/19/09	DTB			86611J1E00		

SWITCH BOX ASSY- 40664-2
 PARAGON INDUSTRIES
 2011 SOUTH TOWN EAST BLVD
 MESQUITE, TEXAS 75149

WIRING DIAGRAM
 240V, 1PHASE, 60HZ, 6400WATTS

TNF1613-3-SSP 1000C