

PART NO 02621J4P00

PPN-6392  
CORDSET W/FUSED  
ATTACHMENT CAP  
250V 13AMP

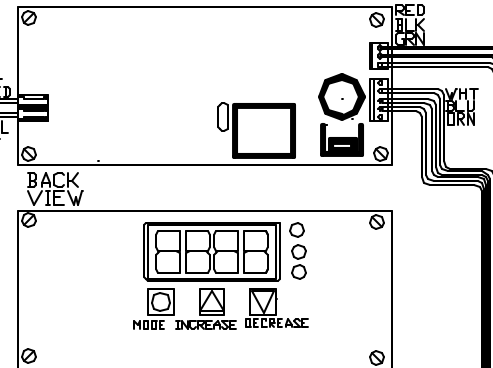
POWER REQ'TS  
240 VOLTS  
1 PHASE  
50 HERTZ  
7.3 AMPS  
1745 WATTS

#6344-1  
CONTROL  
POWER  
ON/OFF  
SWITCH  
10AMP 240V

#2614-3  
MUFFLE  
W/33 OHM  
ELEMENT

#4506  
T/C WIRE  
ASSY

#6355  
30A RELAY  
W/12V  
DC COIL



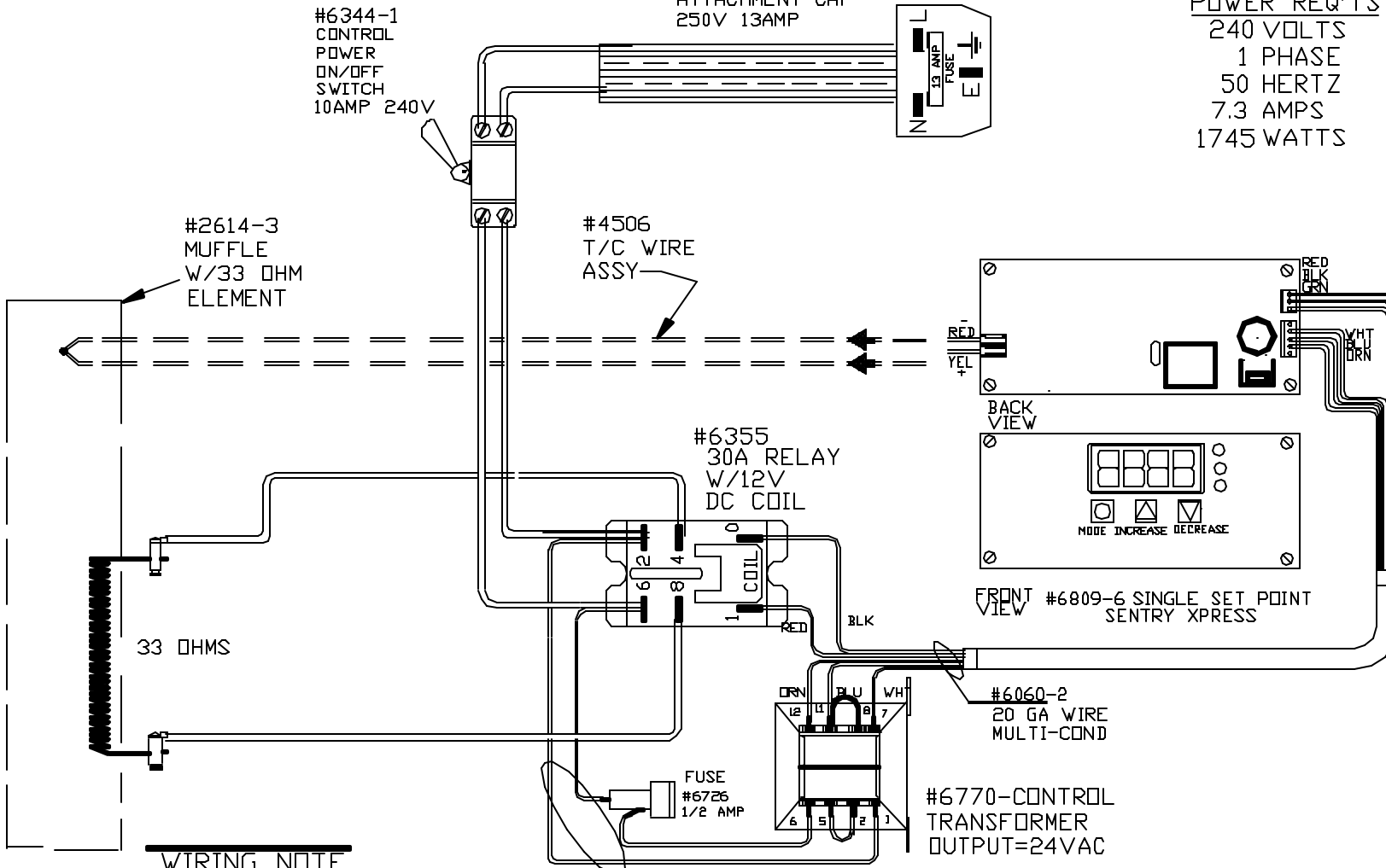
FRONT VIEW #6809-6 SINGLE SET POINT  
SENTRY XPRESS

#6060-2  
20 GA WIRE  
MULTI-COND

#6770-CONTROL  
TRANSFORMER  
OUTPUT=24VAC

FUSE  
#6726  
1/2 AMP

#20 GA  
#4609



WIRING NOTE

ALL WIRES #14 AWG,  
TYPE SEW/SF2 MINIMUM  
UNLESS OTHERWISE NOTED

PAINTED  
STEEL CASE  
CFG 1  
CE APPROVED  
1093°C

NOTE: PLEASE REFER  
TO THIS NUMBER WHEN  
ORDERING PARTS FOR  
THIS KILN

REV	DATE	BY	DESCRIPTION
-	4/2/01	DTB	
A	3/11/02	JTB	ADDED PWR SW

SWITCH BOX ASSY- 40972-1

PARAGON INDUSTRIES  
2011 SOUTH TOWN EAST BLVD  
MESQUITE, TEXAS 75149

WIRING DIAGRAM

240V, 1 PHASE, 50HZ, 1745WATTS

PART NO.	REV
02621J4P00	A
SC2 W/SSP BD	FILE