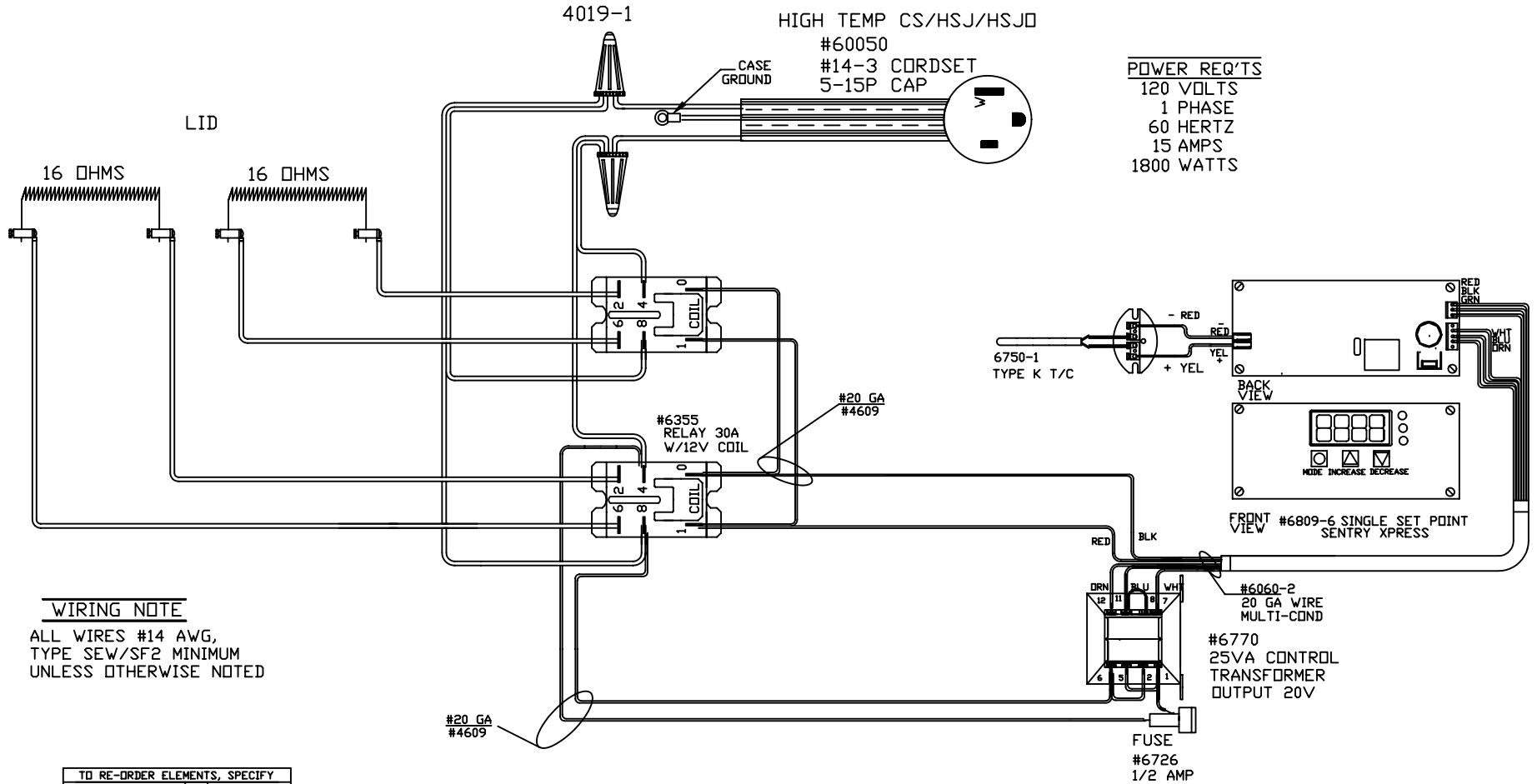


PART NO 47211J3BGA



POWER REQ'TS
 120 VOLTS
 1 PHASE
 60 HERTZ
 15 AMPS
 1800 WATTS

WIRING NOTE

ALL WIRES #14 AWG,
 TYPE SEW/SF2 MINIMUM
 UNLESS OTHERWISE NOTED

TO RE-ORDER ELEMENTS, SPECIFY		
DESCRIPTION	QTY	LDC
EL47211J3BGA	2	LID

CFG 1

1700°F

NOTE: PLEASE REFER
 TO THIS NUMBER WHEN
 ORDERING PARTS FOR
 THIS KILN

REV	DATE	BY	DESCRIPTION
-	12/16/03	RLG	
A	5/17/07	DTB	ADDED 2ND REL, CHG SBA

SWITCH BOX ASSY- 42018-41

PARAGON INDUSTRIES
 2011 SOUTH TOWN EAST BLVD
 MESQUITE, TEXAS 75149

WIRING DIAGRAM

120V , 1 PHASE , 60HZ , 1800 WATTS

PART NO	REV
47211J3BGA	A
KL FUSION 7 TF	