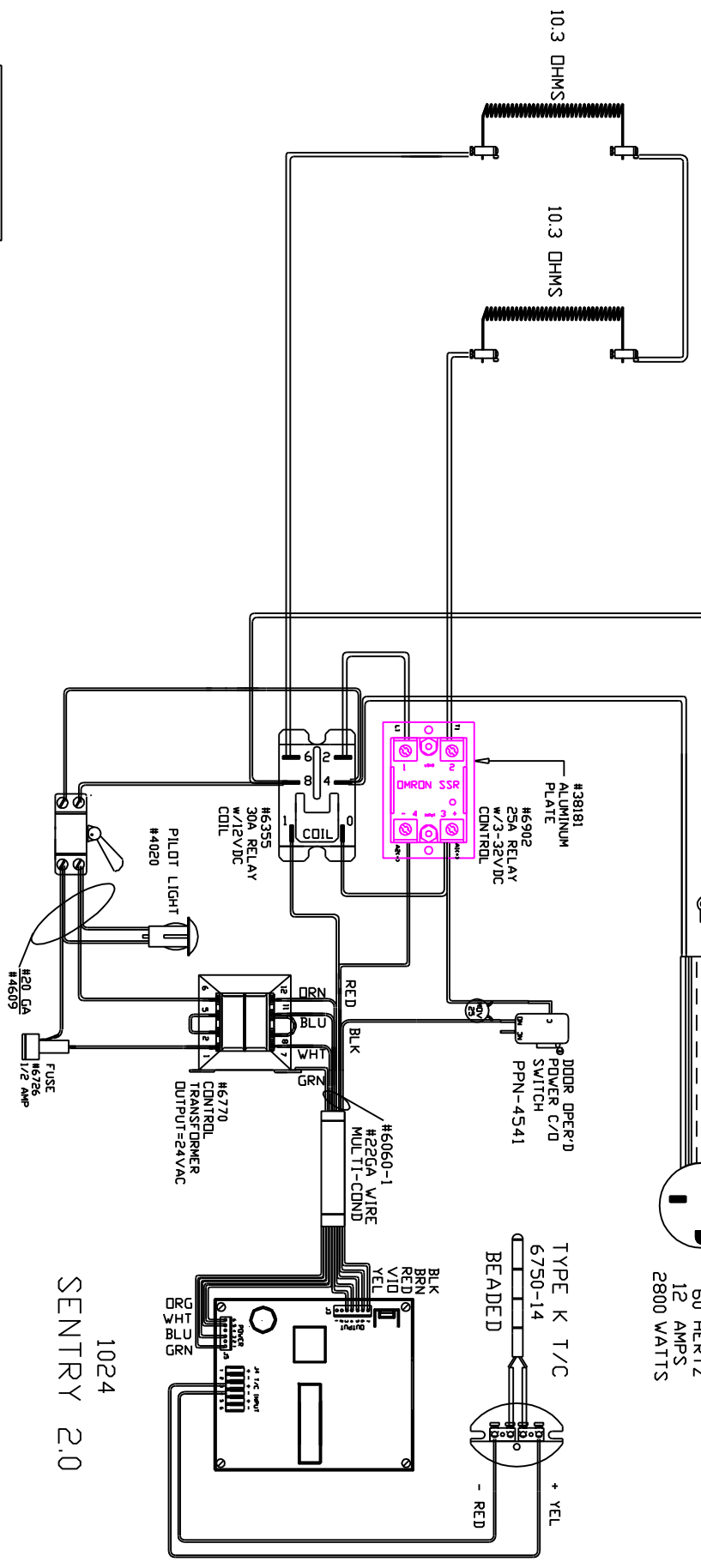
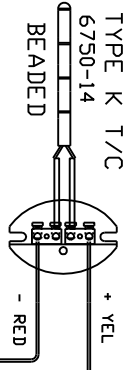
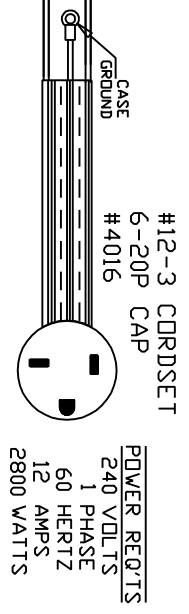


TO RE-ORDER ELEMENTS, SPECIFY		
DESCRIPTION	QTY	LOC
EL010.31153-48	2	SIDE

PART NO SE61221D00



1024
SENTRY 2.0

WIRING NOTE
ALL WIRES #14 AWG,
TYPE SEW/SF2 MINIMUM
UNLESS OTHERWISE NOTED

NOTE: PLEASE REFER
TO THIS NUMBER WHEN
ORDERING PARTS FOR
THIS TUN

REV	DATE	BY	DESCRIPTION	SWITCH BDX ASSY - 42271-43	WIRING DIAGRAM	PART NO	REV
-	6/22/18	MHK	PARAGON INDUSTRIES 2011 SOUTH TOWN EAST BLVD MESQUITE, TEXAS 75149	240V, 1 PHASE, 12A, 60HZ, 2800 WATTS	SE6122MD00	5E6122MD00	CFG 5
-					KM24T		BLUE
-							23509F
-							

PAR_B1