

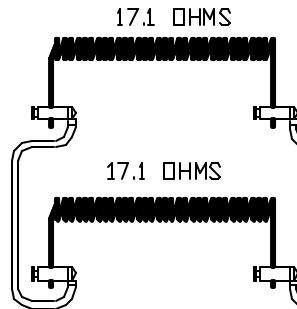
PART NO S0743-10

PPN-6392  
CORDSET W/FUSED  
ATTACHMENT CAP  
250V 13AMP

POWER REQ'TS  
240 VOLTS  
1 PHASE  
50 HERTZ  
7 AMPS  
1680 WATTS

WIRING NOTE

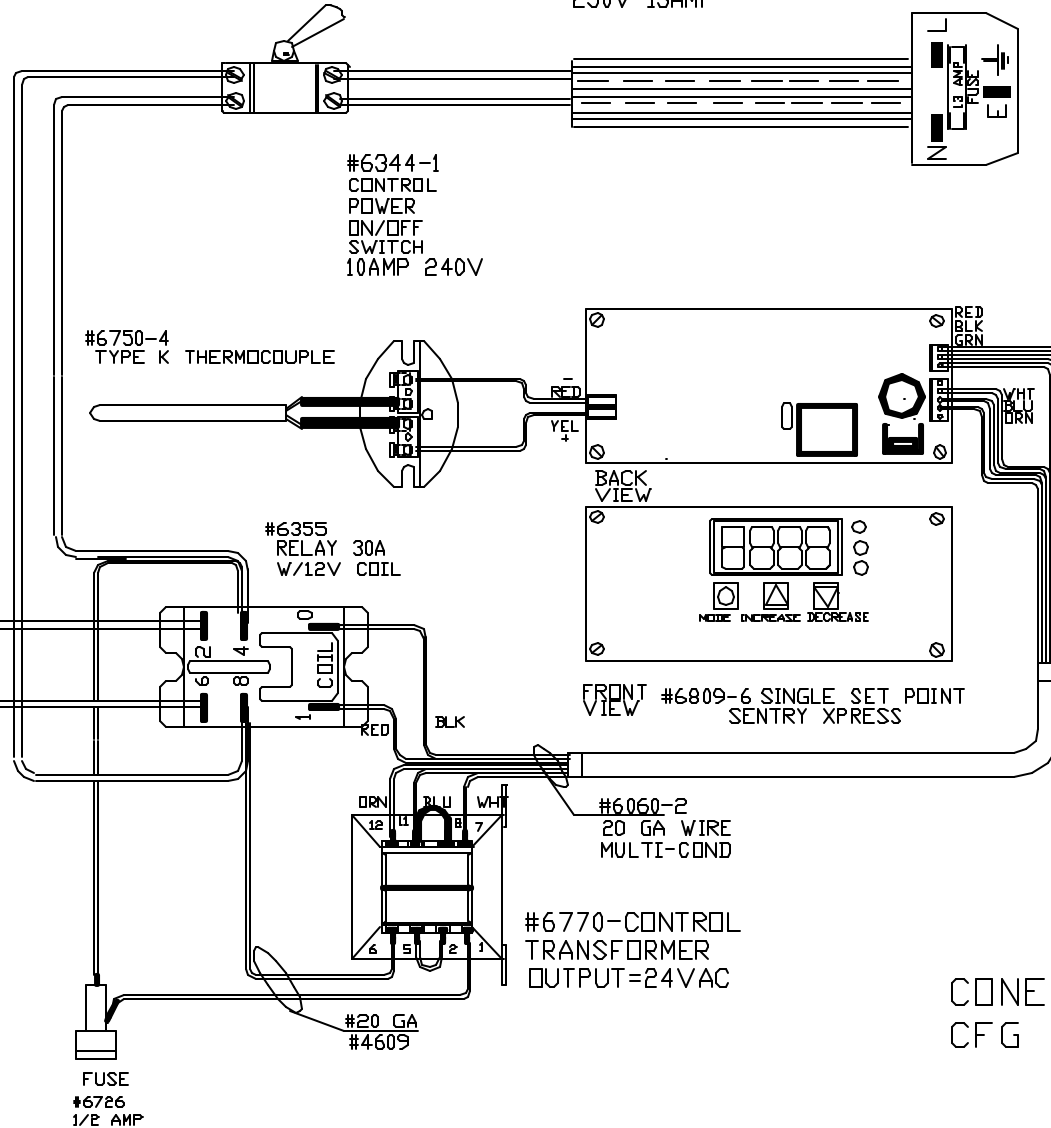
ALL WIRES #14 AWG,  
TYPE SEW/SF2 MINIMUM  
UNLESS OTHERWISE NOTED



TO RE-ORDER ELEMENTS, SPECIFY			
DESCRIPTION	QTY	LOC	
ELS0743-10	2	SIDE	

WIRING NOTE

ALL WIRES #14 AWG,  
TYPE SEW/SF2 MINIMUM  
UNLESS OTHERWISE NOTED



CONE 10/RAMP-HOLD  
CFG 6  
PAINTED  
STEEL CASE

2350°F  
1288°C

NOTE: PLEASE REFER  
TO THIS NUMBER WHEN  
ORDERING PARTS FOR  
THIS KILN

REV	DATE	BY	DESCRIPTION
-	5/19/03	DTB	

SWITCH BOX ASSY- 42008-3

PARAGON INDUSTRIES  
2011 SOUTH TOWN EAST BLVD  
MESQUITE, TEXAS 75149

WIRING DIAGRAM

240V, 1 PHASE, 50HZ, 1680 WATTS

PART NO.	REV
S0743-10	-
CALDERA 8X8X6 SSP-PAR	