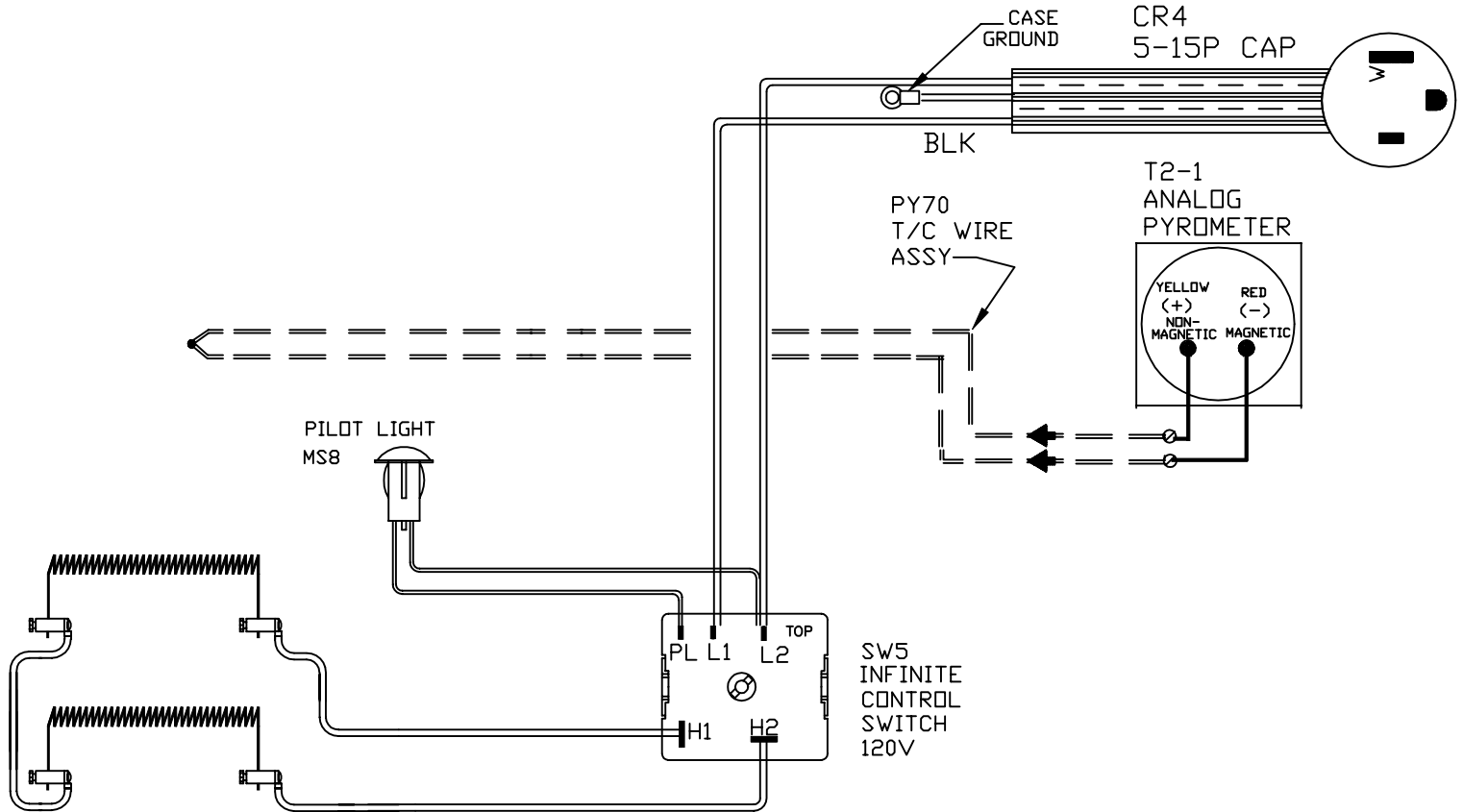


POWER REQ'TS  
 120 VOLTS  
 1 PHASE  
 60 HERTZ  
 15 AMPS  
 1680 WATTS



WIRING NOTE

ALL WIRES #14 AWG,  
 TYPE SEW/SF2 MINIMUM  
 UNLESS OTHERWISE NOTED

TO RE-ORDER ELEMENTS, SPECIFY		
DESCRIPTION	QTY	LDC
ELCALDERA	2	SIDE

REV	DATE	BY	DESCRIPTION
-	6-6-02	RLG	

SWITCH BOX ASSY-  
 PARAGON INDUSTRIES  
 2011 SOUTH TOWN EAST BLVD  
 MESQUITE, TEXAS 75149

WIRING DIAGRAM  
 120V ,1 PHASE ,50HZ 1680 WATTS

PART NO.	REV
CALDERA-S	-
8 X 8 X 6 MANUAL	