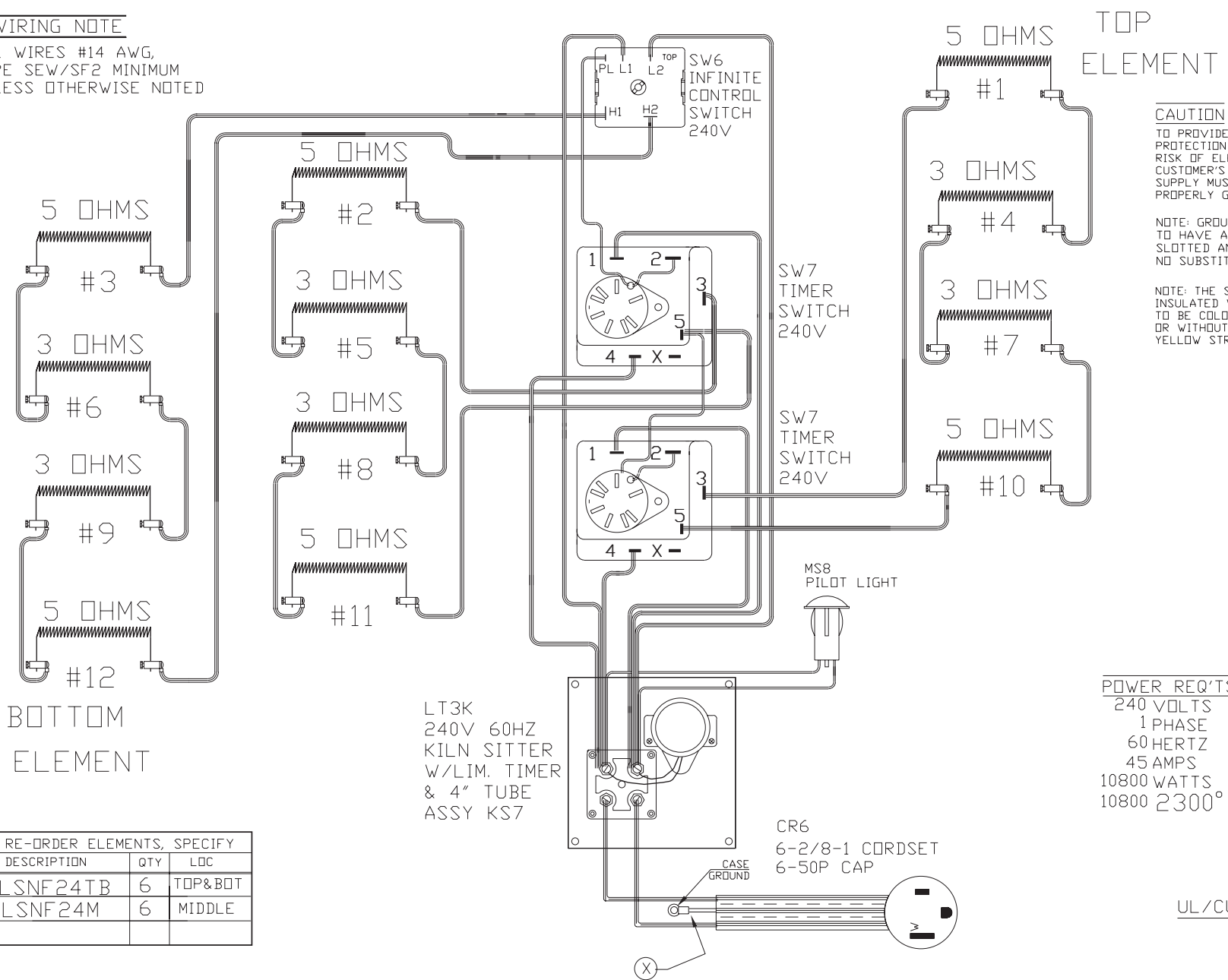


WIRING NOTE

ALL WIRES #14 AWG,
TYPE SEW/SF2 MINIMUM
UNLESS OTHERWISE NOTED



CAUTION
TO PROVIDE CONTINUED
PROTECTION AGAINST THE
RISK OF ELECTRIC SHOCK,
CUSTOMER'S POWER
SUPPLY MUST BE
PROPERLY GROUNDING.

NOTE: GROUNDING SCREW
TO HAVE A GREEN COLORED
SLOTTED AND/OR HEX HEAD
NO SUBSTITUTES. USE #1005

NOTE: THE SURFACE OF THE
INSULATED WIRES MARKED (X)
TO BE COLORED GREEN, WITH
OR WITHOUT ONE OR MORE
YELLOW STRIPES.

POWER REQ'TS
240 VOLTS
1 PHASE
60 HERTZ
45 AMPS
10800 WATTS
10800 2300° F

UL/CUL LISTED

BOTTOM
ELEMENT

TOP
ELEMENT

TO RE-ORDER ELEMENTS, SPECIFY		
DESCRIPTION	QTY	LOC
ELSNF24TB	6	TOP&BOT
ELSNF24M	6	MIDDLE

LT3K
240V 60HZ
KILN SITTER
W/LIM. TIMER
& 4" TUBE
ASSY KS7

CR6
6-2/8-1 CORDSET
6-50P CAP

COMMENTS

PARAGON INDUSTRIES
2011 SOUTH TOWN EAST BLVD
MESQUITE, TEXAS 75149

PRODUCT DESCRIPTION
10 SIDES, 23.5" DIA, 29" DP
240V, 1PH, 60HZ, 45A, 10800W

PART NO.	SNF24	REV	-
WIRING DIAGRAM			