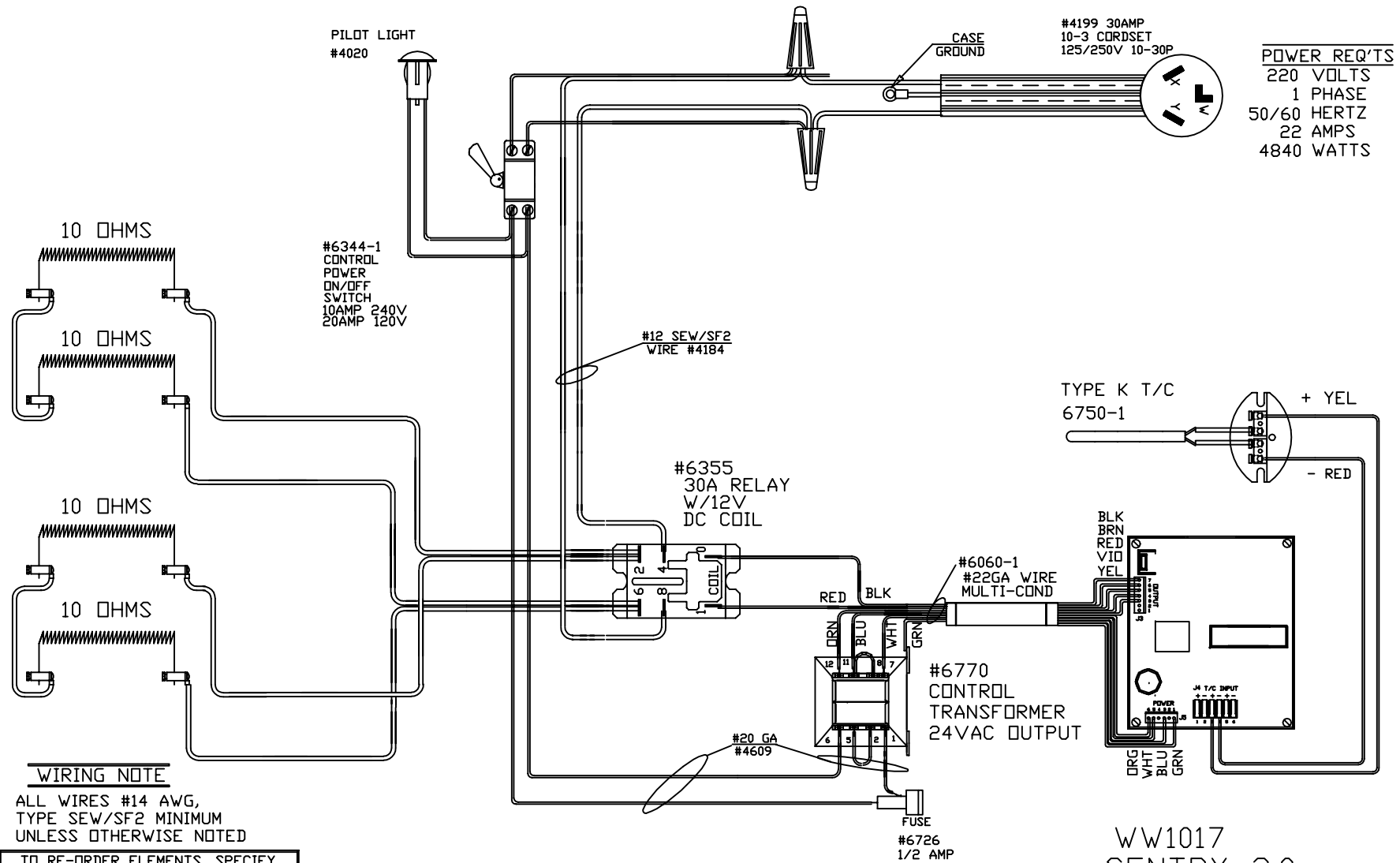


PART NO W18-3



POWER REQ'TS
 220 VOLTS
 1 PHASE
 50/60 HERTZ
 22 AMPS
 4840 WATTS

WIRING NOTE

ALL WIRES #14 AWG,
 TYPE SEW/SF2 MINIMUM
 UNLESS OTHERWISE NOTED

TO RE-ORDER ELEMENTS, SPECIFY		
DESCRIPTION	QTY	LOC
ELW18-3	4	SIDES

WW1017
 SENTRY 2.0
 IC
 STAINLESS
 STEEL CASE
 1700° F

REV	DATE	BY	DESCRIPTION
-	9/24/02	DTB	

SWITCH BOX ASSY- 42035-1

PARAGON INDUSTRIES
 2011 SOUTH TOWN EAST BLVD
 MESQUITE, TEXAS 75149

WIRING DIAGRAM

240V 1 PHASE 60HZ 4840WATTS

PART NO	REV
W18-3	-
181818	FILE