

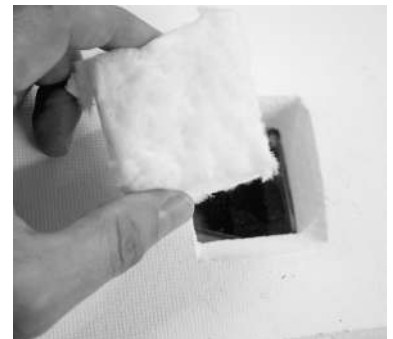
# Plugging the Glass View Port



Shown above is the 1" x 3" view port.

You can conveniently watch every stage of firing through the glass view port. This is useful in fusing and slumping glass.

When firing silver clay and other materials that do not need visual inspection, you can temporarily plug the glass view port to reduce heat loss. Insert the fiber



Shown above is the 2" x 2" view port. Please specify size when ordering a fiber plug.

plug so that it fits securely against the view port. Friction will hold the fiber plug in place.

If you ever need to order a replacement fiber plug, please specify view port size (1" x 3" or 2" x 2").

*Always wear firing safety glasses when looking through the view port into the hot firing chamber.*

©2007, by Paragon Industries, L.P. IM-237/6-07