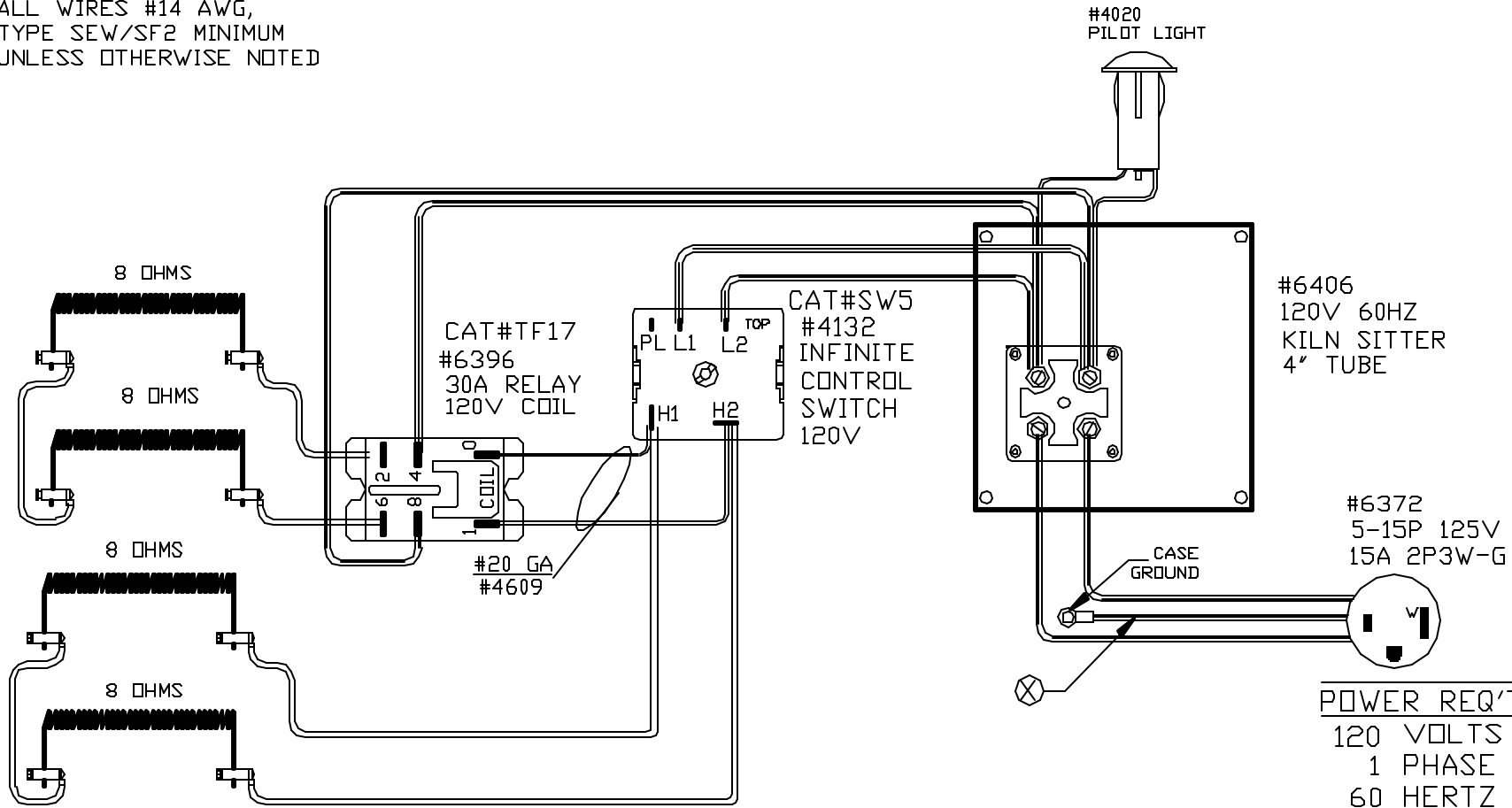


WIRING NOTE

ALL WIRES #14 AWG,  
TYPE SEW/SF2 MINIMUM  
UNLESS OTHERWISE NOTED



POWER REQ'TS  
120 VOLTS  
1 PHASE  
60 HERTZ  
15 AMPS  
1800 WATTS

TO RE-ORDER ELEMENTS, SPECIFY		
DESCRIPTION	QTY	LOC
ELS1223	4	SIDE

MAX. TEMP.

2300° F

ORIGINAL ISSUE	3-30-09	BY	RLG
DATE	BY	DESCRIPTION	

SW BOX # 4052

I/C

PARAGON INDUSTRIES, INC  
2011 SOUTH TOWN EAST BLVD  
MESQUITE, TEXAS 75149-1122

WIRING DIAGRAM  
MODEL S1223 - KS  
120V 1PH 60HZ 2200W

PART NO	S1223-1	REV
		FILE