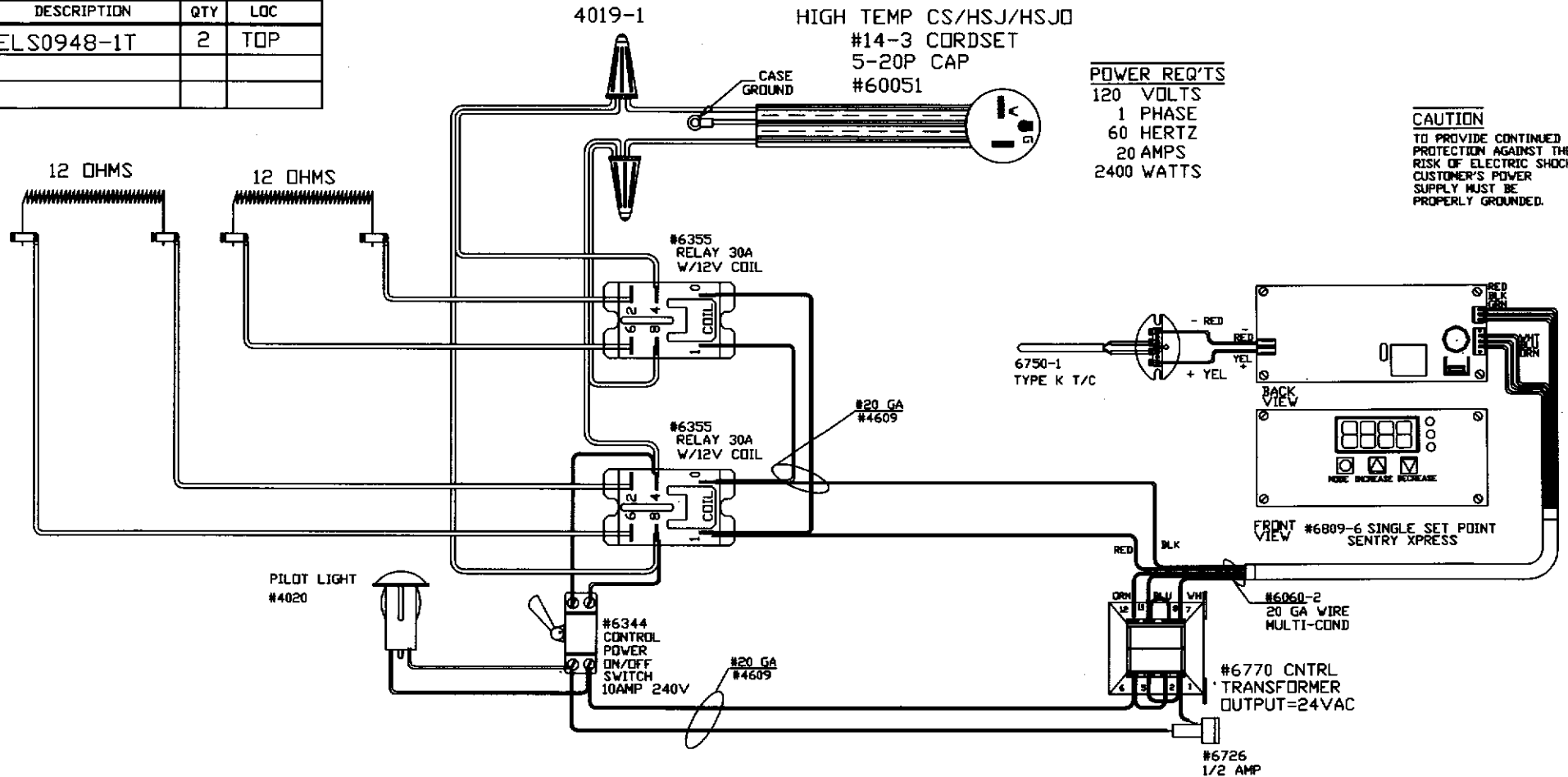


TO RE-ORDER ELEMENTS, SPECIFY		
DESCRIPTION	QTY	LOC
ELS0948-1T	2	TOP



WIRING NOTE
ALL WIRES #14 AWG,
TYPE SEW/SF2 MINIMUM
UNLESS OTHERWISE NOTED

CFG 1
MAX. TEMP.
1700°F

NOTE: PLEASE REFER TO THIS NUMBER WHEN ORDERING PARTS FOR THIS KILN

TUV CERTIFIED

REV	DATE	BY	DESCRIPTION
-	7/18/05	DTB	
A	1/6/09	DTB	ADDED 2ND REL, CHG T/C

SWITCH BOX ASSY- 42090
PARAGON INDUSTRIES
2011 SOUTH TOWN EAST BLVD
MESQUITE, TEXAS 75149

WIRING DIAGRAM		PART NO	REV
120V ,1 PHASE ,60HZ ,2400WATTS	11X13X11D	S0948-1	A
			FILE