

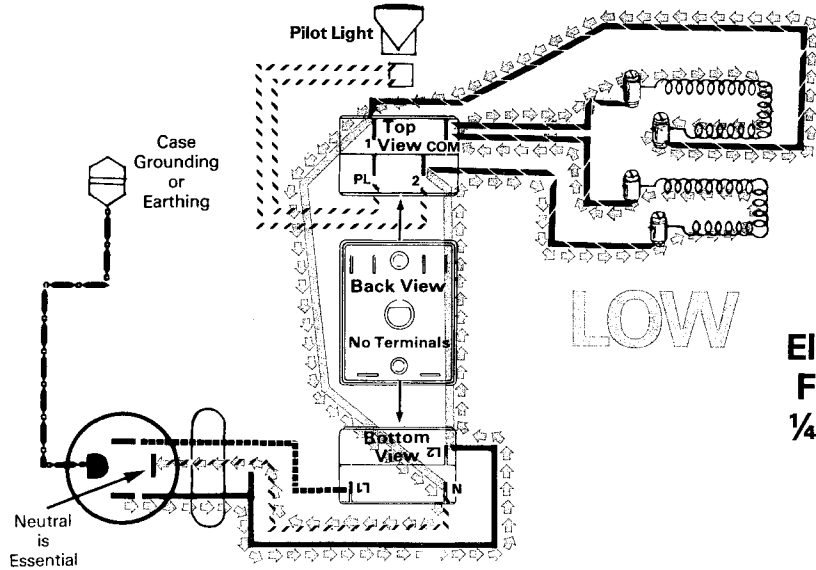
Paragon KILNS

Box 808
Mesquite, Texas 75149 - 0170

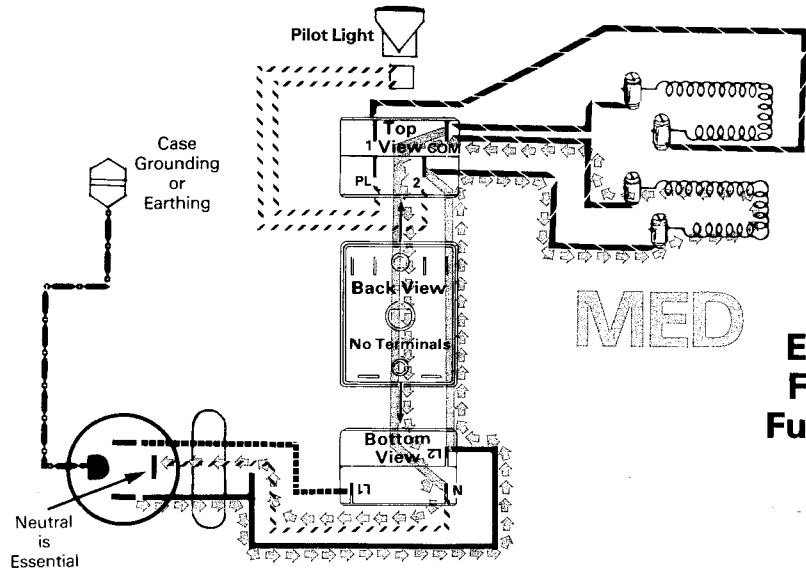
CURRENT FLOW THROUGH A 4-WAY ROTARY SWITCH

These diagrams show how electric current flows through a 4-way rotary switch (A-21 for push-on terminals) to the elements in each switch position. The current enters the switch from the bottom and leaves through the top.

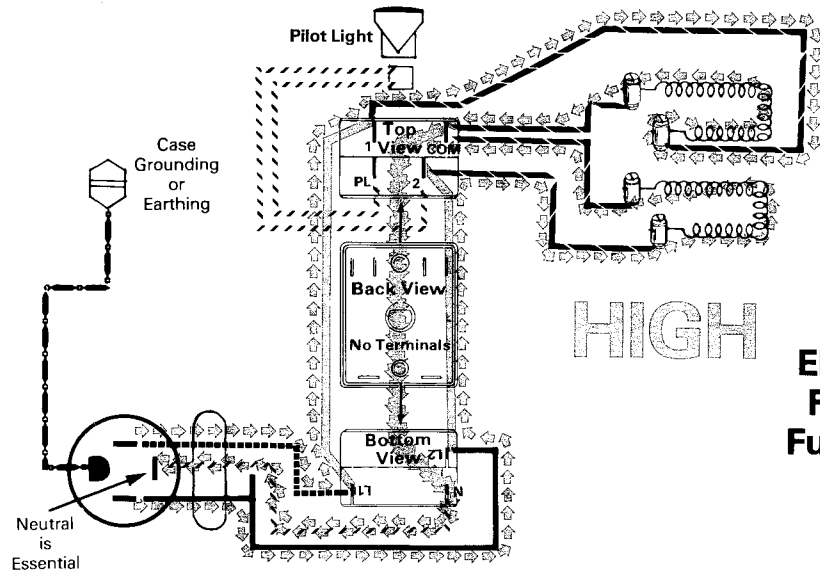
Understanding how current flows through the switch is very helpful in interpreting ohmmeter readings of the kiln.



Two Elements Firing at 1/4 Power



One Element Firing at Full Power



Two Elements Firing at Full Power