

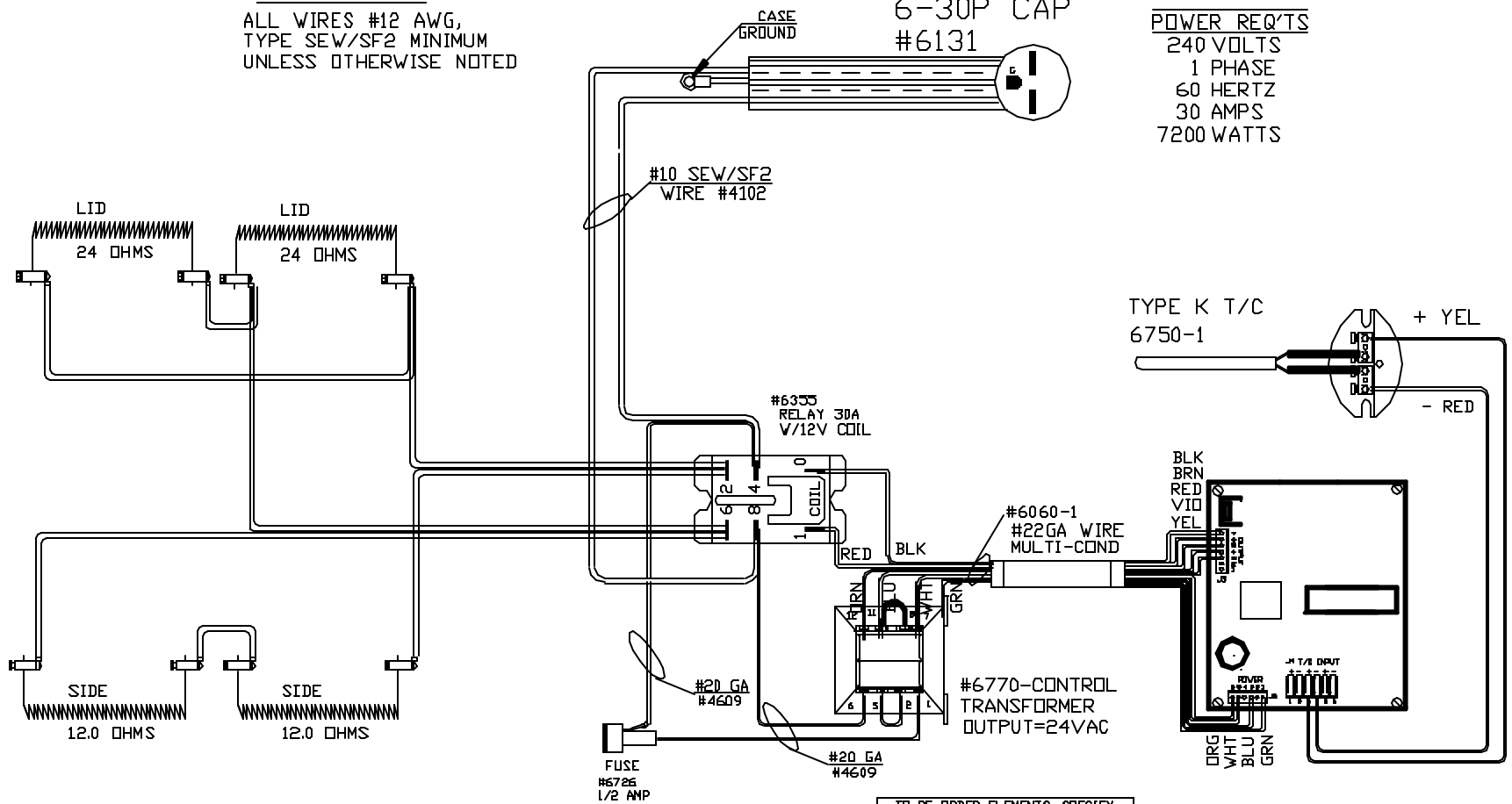
WIRING NOTE

ALL WIRES #12 AWG,
TYPE SEW/SF2 MINIMUM
UNLESS OTHERWISE NOTED

10/3 CORDSET
6-30P CAP
#6131

POWER REQ'TS

240 VOLTS
1 PHASE
60 HERTZ
30 AMPS
7200 WATTS



TO RE-ORDER ELEMENTS, SPECIFY		
DESCRIPTION	QTY	LOC
ELS1011T	2	LID
ELS1011S	2	SIDE

R/H 1700
SENTRY 2.0

CFG 5
1700°F

REV	DATE	BY	DESCRIPTION
-	3-9-06	RLG	

SWITCH BOX ASSY- 42018-9
PARAGON INDUSTRIES
2011 SOUTH TOWN EAST BLVD
MESQUITE, TEXAS 75149

WIRING DIAGRAM
240V, 1 PHASE, 60HZ, 7200 WATTS

PART NO	REV
S1011-2	-
KL OVAL 10 T&SF	FILE