

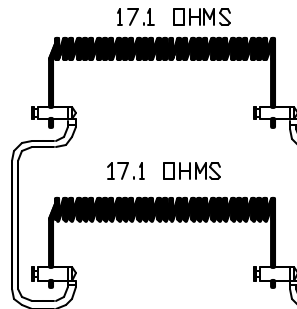
PART NO S0743-10

PPN-6392
CORDSET W/FUSED
ATTACHMENT CAP
250V 13AMP

POWER REQ'TS
240 VOLTS
1 PHASE
50 HERTZ
7 AMPS
1680 WATTS

WIRING NOTE

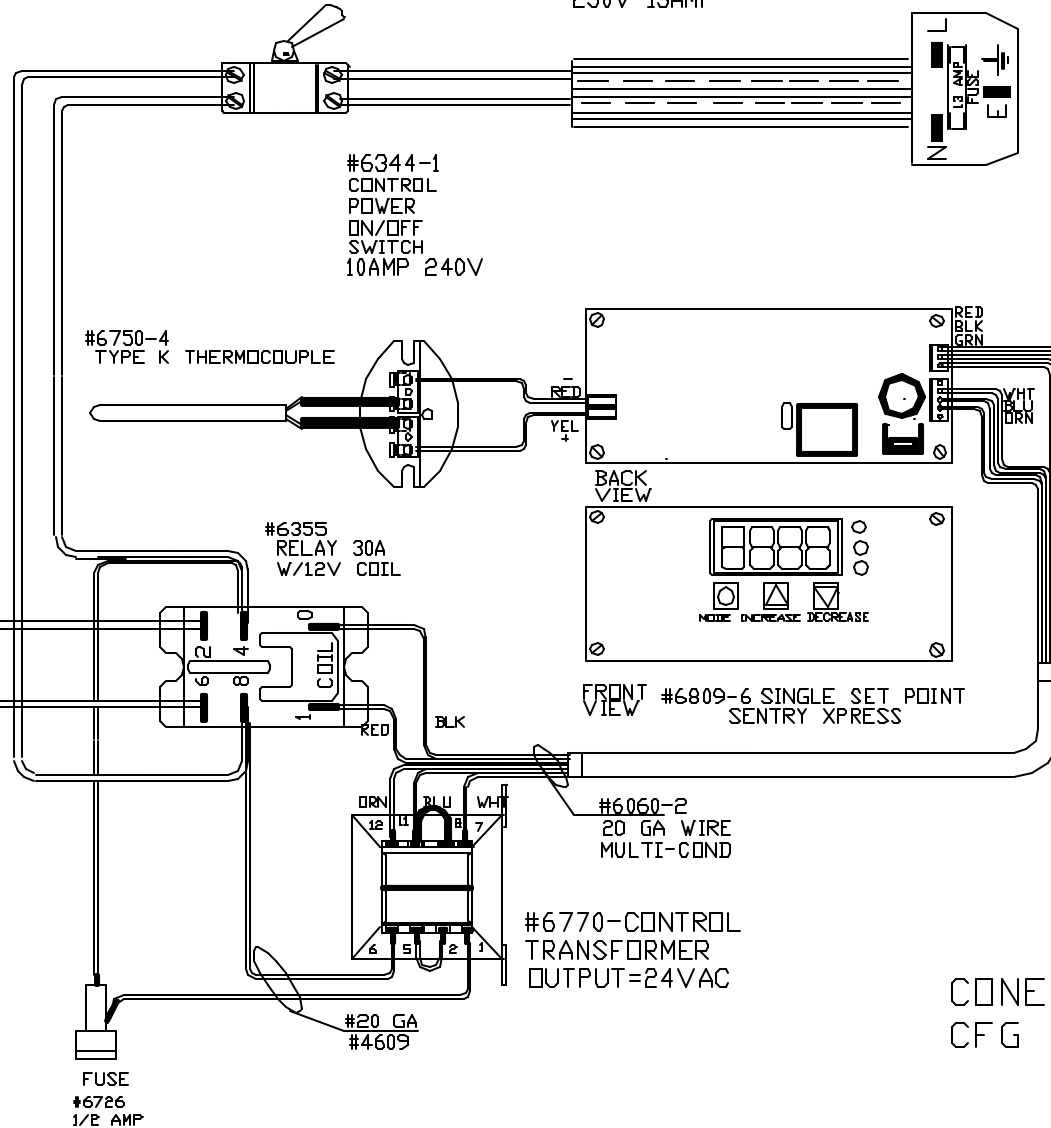
ALL WIRES #14 AWG,
TYPE SEW/SF2 MINIMUM
UNLESS OTHERWISE NOTED



TO RE-ORDER ELEMENTS, SPECIFY		
DESCRIPTION	QTY	LOC
ELS0743-10	2	SIDE

WIRING NOTE

ALL WIRES #14 AWG,
TYPE SEW/SF2 MINIMUM
UNLESS OTHERWISE NOTED



CONE 10/RAMP-HOLD
CFG 6 PAINTED
STEEL CASE

2350°F
1288°C

NOTE: PLEASE REFER
TO THIS NUMBER WHEN
ORDERING PARTS FOR
THIS KILN

REV	DATE	BY	DESCRIPTION
-	5/19/03	DTB	

SWITCH BOX ASSY- 42008-3

PARAGON INDUSTRIES
2011 SOUTH TOWN EAST BLVD
MESQUITE, TEXAS 75149

WIRING DIAGRAM

240V, 1 PHASE, 50HZ, 1680 WATTS

PART NO.	REV
S0743-10	-
CALDERA 8X8X6 SSP-PAR	