

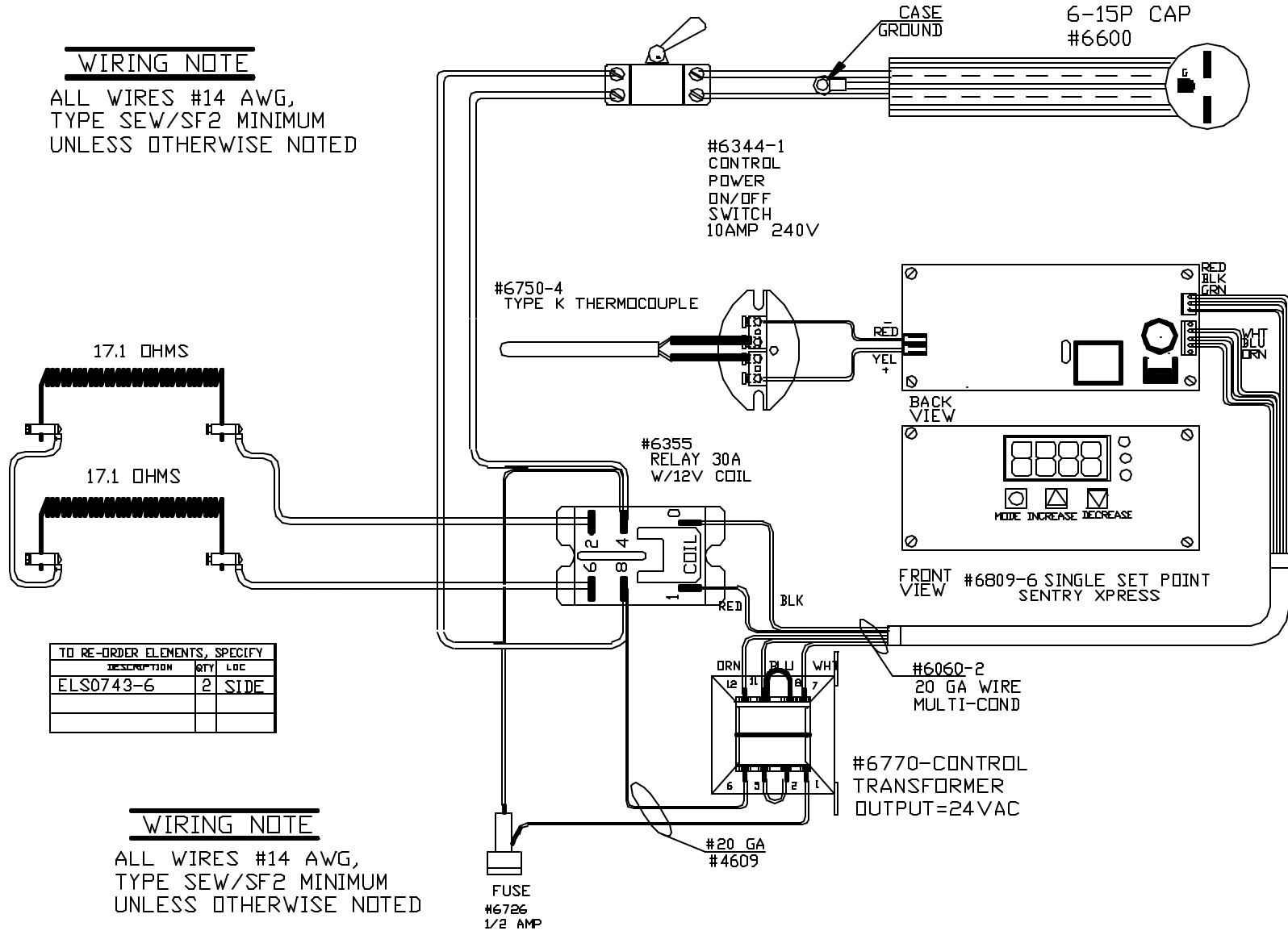
PART NO S0743-6

14/3 CORDSET
6-15P CAP
#6600

POWER REQ'TS
240 VOLTS
1 PHASE
60 HERTZ
7 AMPS
1680 WATTS

WIRING NOTE

ALL WIRES #14 AWG,
TYPE SEW/SF2 MINIMUM
UNLESS OTHERWISE NOTED



TO RE-ORDER ELEMENTS, SPECIFY

DESCRIPTION	QTY	LOC
ELS0743-6	2	SIDE

WIRING NOTE

ALL WIRES #14 AWG,
TYPE SEW/SF2 MINIMUM
UNLESS OTHERWISE NOTED

PRG CFG6

PAINTED
STEEL CASE

2350°F

NOTE: PLEASE REFER
TO THIS NUMBER WHEN
ORDERING PARTS FOR
THIS KILN

REV	DATE	BY	DESCRIPTION
-	3/11/02	DTB	
A	4/25/02	DTB	CORRECTED EL WIRING
B	10/24/02	DTB	CHG T/C TO 1/4 DIA

SWITCH BOX ASSY- 42008-1

PARAGON INDUSTRIES
2011 SOUTH TOWN EAST BLVD
MESQUITE, TEXAS 75149

WIRING DIAGRAM

240V, 1 PHASE, 60HZ, 1680 WATTS

PART NO	REV
S0743-6	B
KL CALDERA 8X8X6 SSP-PAR	