

TO RE-ORDER ELEMENTS, SPECIFY		
DESCRIPTION	QTY	LOC
ELS0907-1T	1	TOP

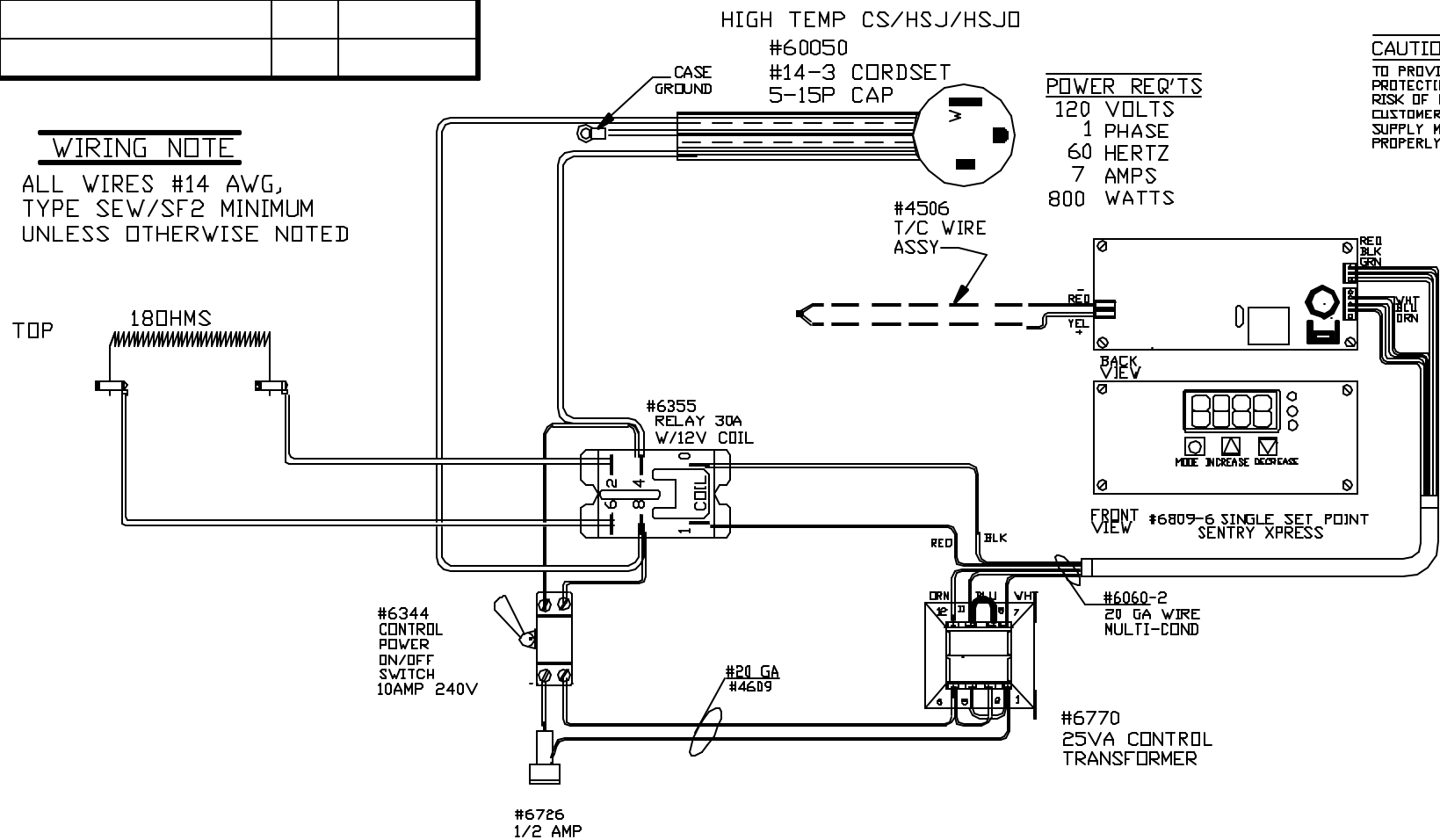
HIGH TEMP CS/HSJ/HSJD
#60050
#14-3 CORDSET
5-15P CAP

POWER REQ'TS
120 VOLTS
1 PHASE
60 HERTZ
7 AMPS
800 WATTS

CAUTION
TO PROVIDE CONTINUED PROTECTION AGAINST THE RISK OF ELECTRIC SHOCK, CUSTOMER'S POWER SUPPLY MUST BE PROPERLY GROUNDED.

WIRING NOTE

ALL WIRES #14 AWG,
TYPE SEW/SF2 MINIMUM
UNLESS OTHERWISE NOTED



NOTE: PLEASE REFER TO THIS NUMBER WHEN ORDERING PARTS FOR THIS KILN

CFG1
I/C
MAX. TEMP.
1700°F

REV	DATE	BY	DESCRIPTION
-	9/1/04	DTB	
A	11/1/04	DTB	CHG T/C

SWITCH BOX ASSY- 42076-1
PARAGON INDUSTRIES
2011 SOUTH TOWN EAST BLVD
MESQUITE, TEXAS 75149

WIRING DIAGRAM
120V 1 PHASE 60HZ 800WATTS

PART NO.	REV
S0907-1	A
KL SSP 11X4.3X7DP	FILE