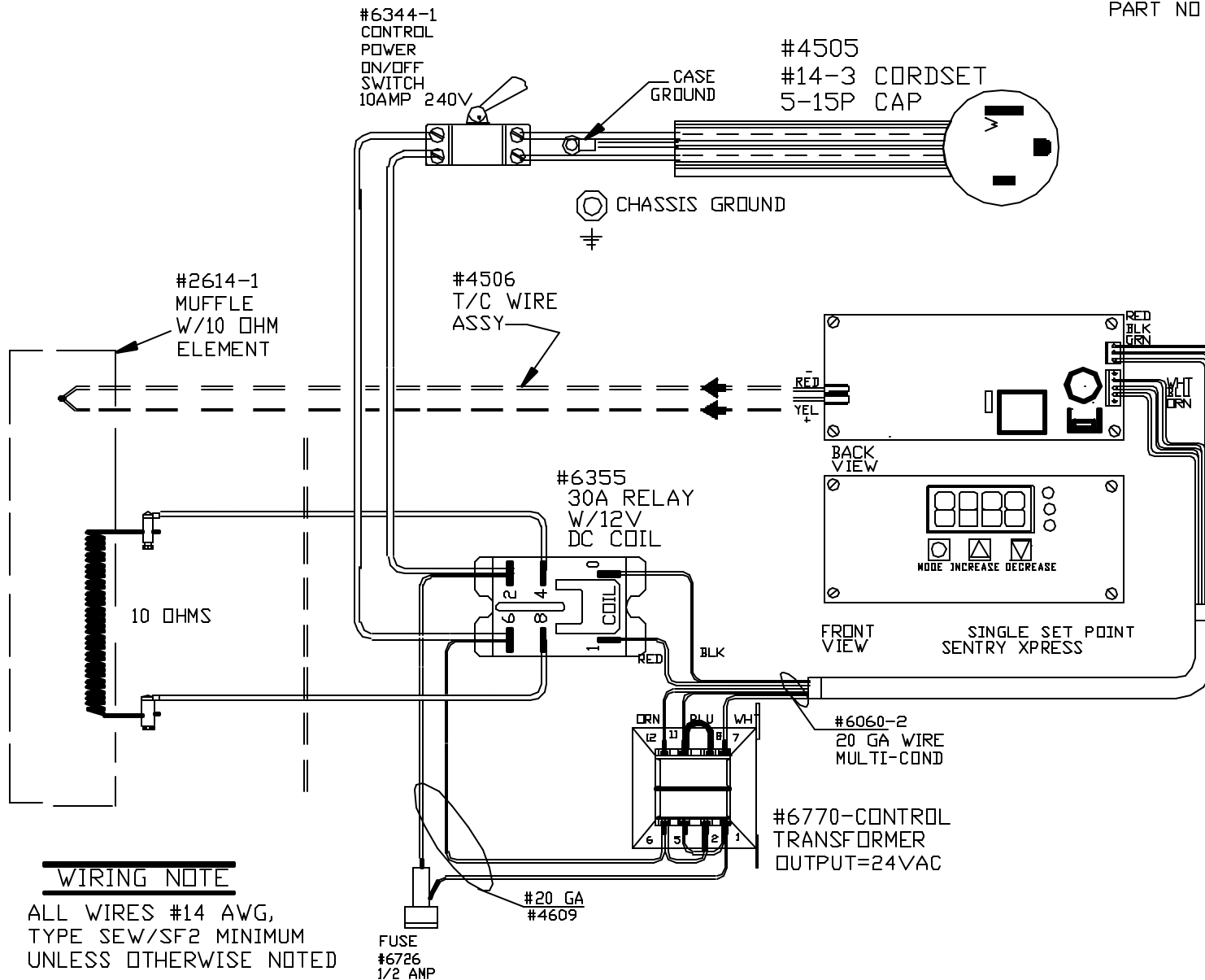


PART NO 02211J1BEC

POWER REQ'TS
 120 VOLTS
 1 PHASE
 60 HERTZ
 12 AMPS
 1440 WATTS



WIRING NOTE

ALL WIRES #14 AWG,
 TYPE SEW/SF2 MINIMUM
 UNLESS OTHERWISE NOTED

UL/CUL LISTED

PAINTED
 STEEL CASE
 CFG 1
 2000°F

NOTE: PLEASE REFER
 TO THIS NUMBER WHEN
 ORDERING PARTS FOR
 THIS KILN

REV	DATE	BY	DESCRIPTION
-	11/1/04	DTB	

SWITCH BOX ASSY- 40847-1	WIRING DIAGRAM	PART NO 02211J1BEC	REV -
PARAGON INDUSTRIES 2011 SOUTH TOWN EAST BLVD MESQUITE, TEXAS 75149	120V ,1 PHASE ,60HZ ,1440WATTS	SC2 W/SEN-SSP BD	FILE