

WIRING NOTE

ALL WIRES #14 AWG,
TYPE SEW/SF2 MINIMUM
UNLESS OTHERWISE NOTED

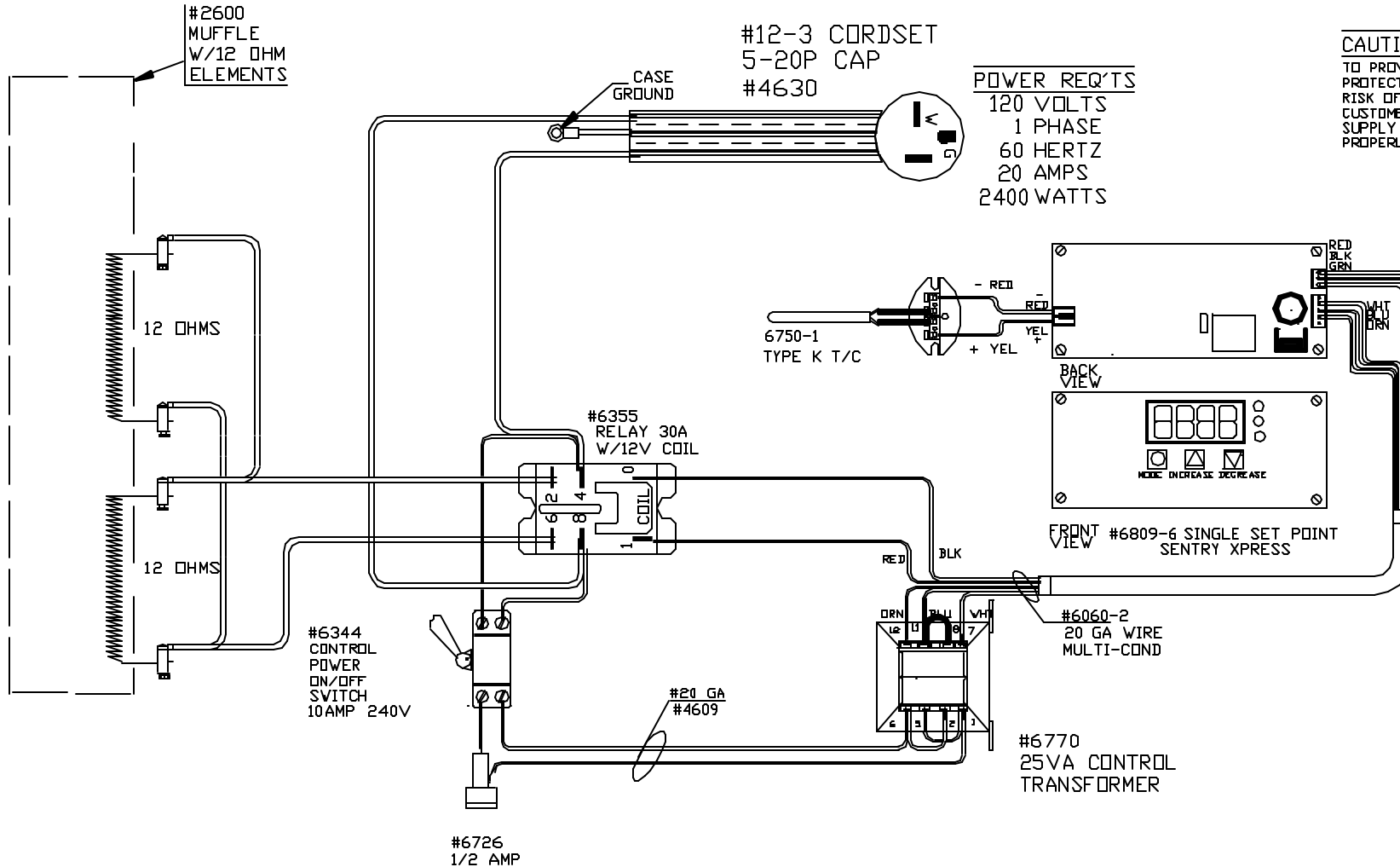
CAUTION

TO PROVIDE CONTINUED
PROTECTION AGAINST THE
RISK OF ELECTRIC SHOCK,
CUSTOMER'S POWER
SUPPLY MUST BE
PROPERLY GROUNDIED.

POWER REQ'TS

120 VOLTS
1 PHASE
60 HERTZ
20 AMPS
2400 WATTS

#12-3 CORDSET
5-20P CAP
#4630



NOTE: PLEASE REFER
TO THIS NUMBER WHEN
ORDERING PARTS FOR
THIS KILN

CFG1
MAX. TEMP.
1700°F

REV	DATE	BY	DESCRIPTION
-	5/25/09	DTB	

SWITCH BOX ASSY- 4618-3

PARAGON INDUSTRIES
2011 SOUTH TOWN EAST BLVD
MESQUITE, TEXAS 75149

WIRING DIAGRAM

120V ,1PHASE ,60HZ 2400WATTS

PART NO.	REV
15211J1C00	-
TNF-J-14-1	FILE