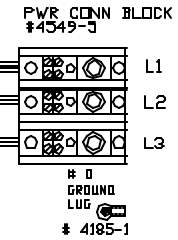


TO RE-ORDER ELEMENTS, SPECIFY		
DESCRIPTION	QTY	LOC
EL307111ETB	4	TOP/BOT
EL307111EM	2	MID

10 GA WIRE  
SEW

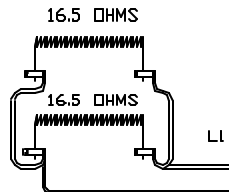


**POWER REQ'TS**  
208 VOLTS  
3 PHASE  
60 HERTZ  
44 AMPS  
14400 WATTS

**WIRE SIZES**

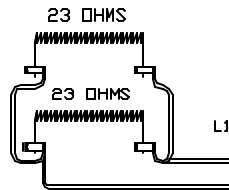
NOTE: ALL WIRES TO BE  
TYPE SEW/SF2, #10 AWG  
MINIMUM UNLESS NOTED

#6311  
30A RELAY  
208-240V  
COIL  
DPST-NO



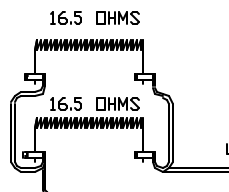
L1

L2



L1

L3



L2

L3

#6344-1  
CONTROL  
POWER  
IN/OUT  
SWITCH  
UNIP 240V

**CONTROL WIRING NOTE**

ALL CONTROL WIRES  
#20 AWG #4609  
UNLESS OTHERWISE NOTED

#20 GA  
#4609

**CAUTION**

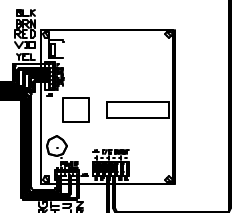
TO PROVIDE CONTINUED  
PROTECTION AGAINST THE  
RISK OF ELECTRIC SHOCK,  
CUSTOMER'S POWER  
SUPPLY MUST BE  
PROPERLY GROUNDDED.

#6355  
3DA RELAY  
V/12V  
DC COIL

#6770-CONTROL  
TRANSFORMER  
OUTPUT=24VAC

FUSE #6726  
1/2 AMP

TYPE K T/C  
6750-1



CONE FIRE  
SENTRY 2.0

2350°F

REV	DATE	BY	DESCRIPTION
-	11/19/01	DTB	
A	12/27/01	DTB	CORRECTED T/C

SWITCH BOX ASSY- 42017-2

PARAGON INDUSTRIES  
2011 SOUTH TOWN EAST BLVD  
MESQUITE, TEXAS 75149

**WIRING DIAGRAM**

208V, 3 PHASE, 60HZ, 14400WATTS

PART NO. 307111EA00

VIK283-SEN-C

REV A