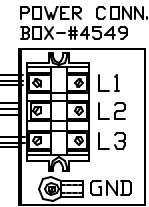
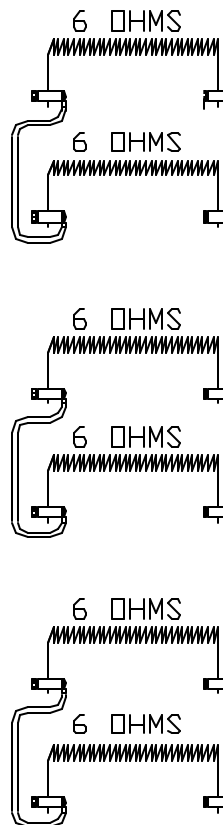


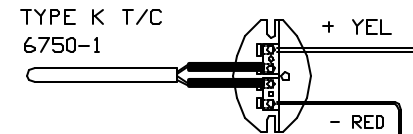
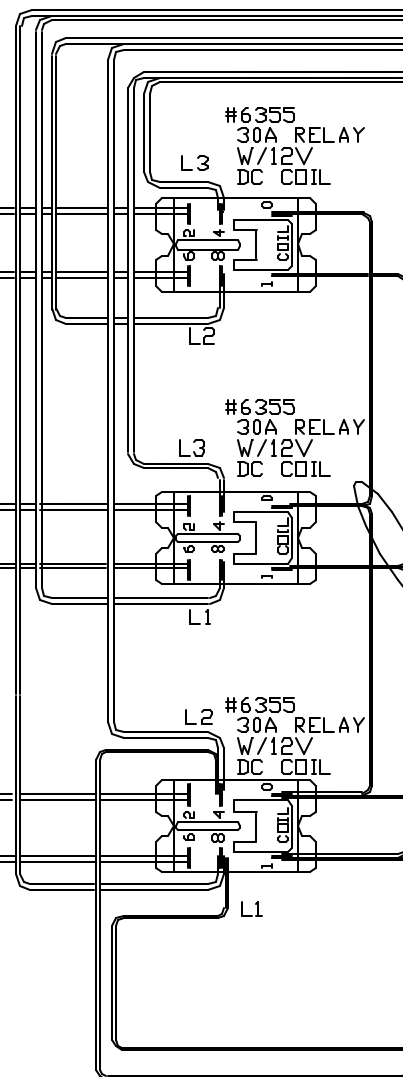
PART NO 797111A00



**POWER REQ'TS**  
 208 VOLTS  
 3 PHASE  
 60 HERTZ  
 30 AMPS/LINE  
 10800 WATTS

**CAUTION**  
 TO PROVIDE CONTINUED PROTECTION AGAINST THE RISK OF ELECTRIC SHOCK, CUSTOMER'S POWER SUPPLY MUST BE PROPERLY GROUNDED.

**WIRING NOTE**  
 ALL WIRES #14 AWG, TYPE SEW/SF2 MINIMUM UNLESS OTHERWISE NOTED



#20 GA #4609

RED BLK

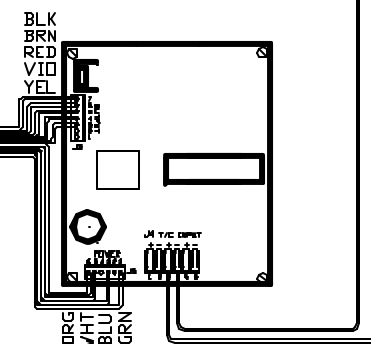
#6060-1 #22GA WIRE MULTI-COND

RED BLK

#6770-CONTROL TRANSFORMER OUTPUT=24VAC

FLUSE #6726 1/2 AMP

#20 GA #4609



TO RE-ORDER ELEMENTS, SPECIFY		
DESCRIPTION	QTY	LOC
EL7971111TBM	6	TOP,BOT &MID

CONE FIRE SENTRY 2.0 CFG 21 2350° F

REV	DATE	BY	DESCRIPTION
-	4/14/05	DTB	-

SWITCH BOX ASSY- 42022-3  
 PARAGON INDUSTRIES  
 2011 SOUTH TOWN EAST BLVD  
 MESQUITE, TEXAS 75149

WIRING DIAGRAM  
 208V, 3 PHASE, 60HZ, 10800WATTS

PART NO.	REV
797111A00	-
TNF-24-3	FILE