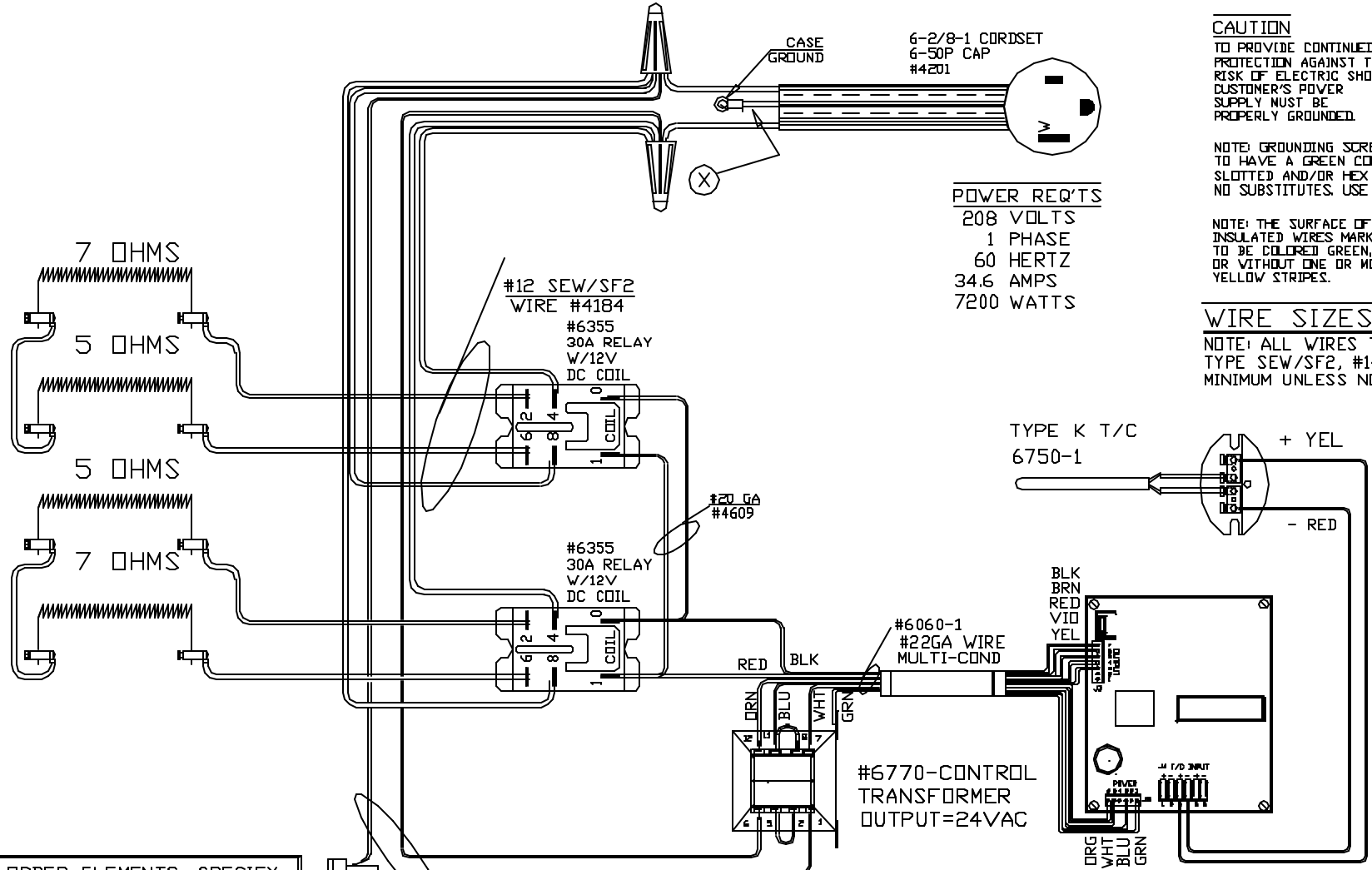


PART NO 8341111



CAUTION
 TO PROVIDE CONTINUED PROTECTION AGAINST THE RISK OF ELECTRIC SHOCK, CUSTOMER'S POWER SUPPLY MUST BE PROPERLY GROUND.

NOTE: GROUNDING SCREW TO HAVE A GREEN COLORED SLOTTED AND/OR HEX HEAD NO SUBSTITUTES. USE #1005

NOTE: THE SURFACE OF THE INSULATED WIRES MARKED (X) TO BE COLORED GREEN, WITH OR WITHOUT ONE OR MORE YELLOW STRIPES.

POWER REQ'TS
 208 VOLTS
 1 PHASE
 60 HERTZ
 34.6 AMPS
 7200 WATTS

WIRE SIZES
 NOTE: ALL WIRES TO BE TYPE SEW/SF2, #14 AWG MINIMUM UNLESS NOTED

TO RE-ORDER ELEMENTS, SPECIFY		
DESCRIPTION	QTY	LOC
EL8341111TB	2	TOP& BOT
EL8341111M	2	MID

FUSE #6726 1/2 AMP #20 GA #4609

CONE FIRE SENTRY 2.0

PAINTED STEEL CASE
 UL/CUL LISTED

N/C

MAX. TEMP. 2350°F

SWITCH BOX ASSY- 42024-1

PARAGON INDUSTRIES
 2011 SOUTH TOWN EAST BLVD
 MESQUITE, TEXAS 75149

WIRING DIAGRAM

208V 1 PHASE 60HZ 7200WATTS

PART NO.	REV
8341111	A
TNF 823 SEN C	FILE

REV	DATE	BY	DESCRIPTION
-	10/7/93	DTB	
A	2/12/02	DTB	CHG BD FROM DTC TO SENTRY, IDB