

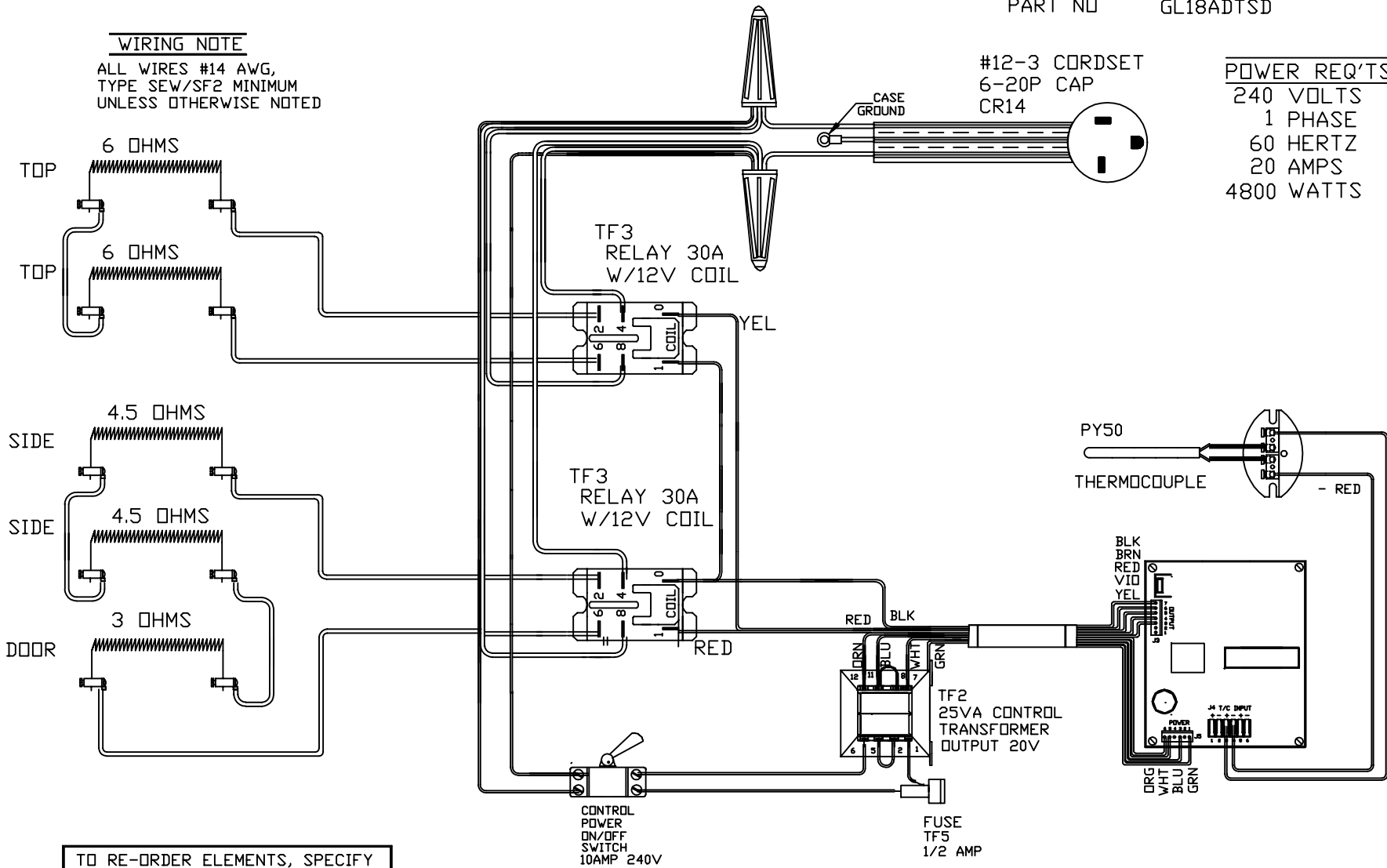
PART NO GL18ADTSD

WIRING NOTE

ALL WIRES #14 AWG,
TYPE SEW/SF2 MINIMUM
UNLESS OTHERWISE NOTED

#12-3 CORDSET
6-20P CAP
CR14

POWER REQ'TS
240 VOLTS
1 PHASE
60 HERTZ
20 AMPS
4800 WATTS



TO RE-ORDER ELEMENTS, SPECIFY

DESCRIPTION	QTY	LOC
ELGL18ADTSDT	2	TOP
ELGL18ADTSDS	2	SIDE
ELGL18ADTSDD	1	DOOR

SENTRY 2.0

REV	DATE	BY	DESCRIPTION
-	6-6-02	RLG	

SWITCH BOX ASSY-

PARAGON INDUSTRIES
2011 SOUTH TOWN EAST BLVD
MESQUITE, TEXAS 75149

WIRING DIAGRAM

240V, 1PHASE, 60HZ, 4800WATTS

PART NO.	REV
GL18ADTSD	-
GL18-TS&D	FILE