

WIRE SIZES

NOTE: ALL WIRES TO BE  
TYPE SEW/SF2, #14 AWG  
MINIMUM UNLESS NOTED

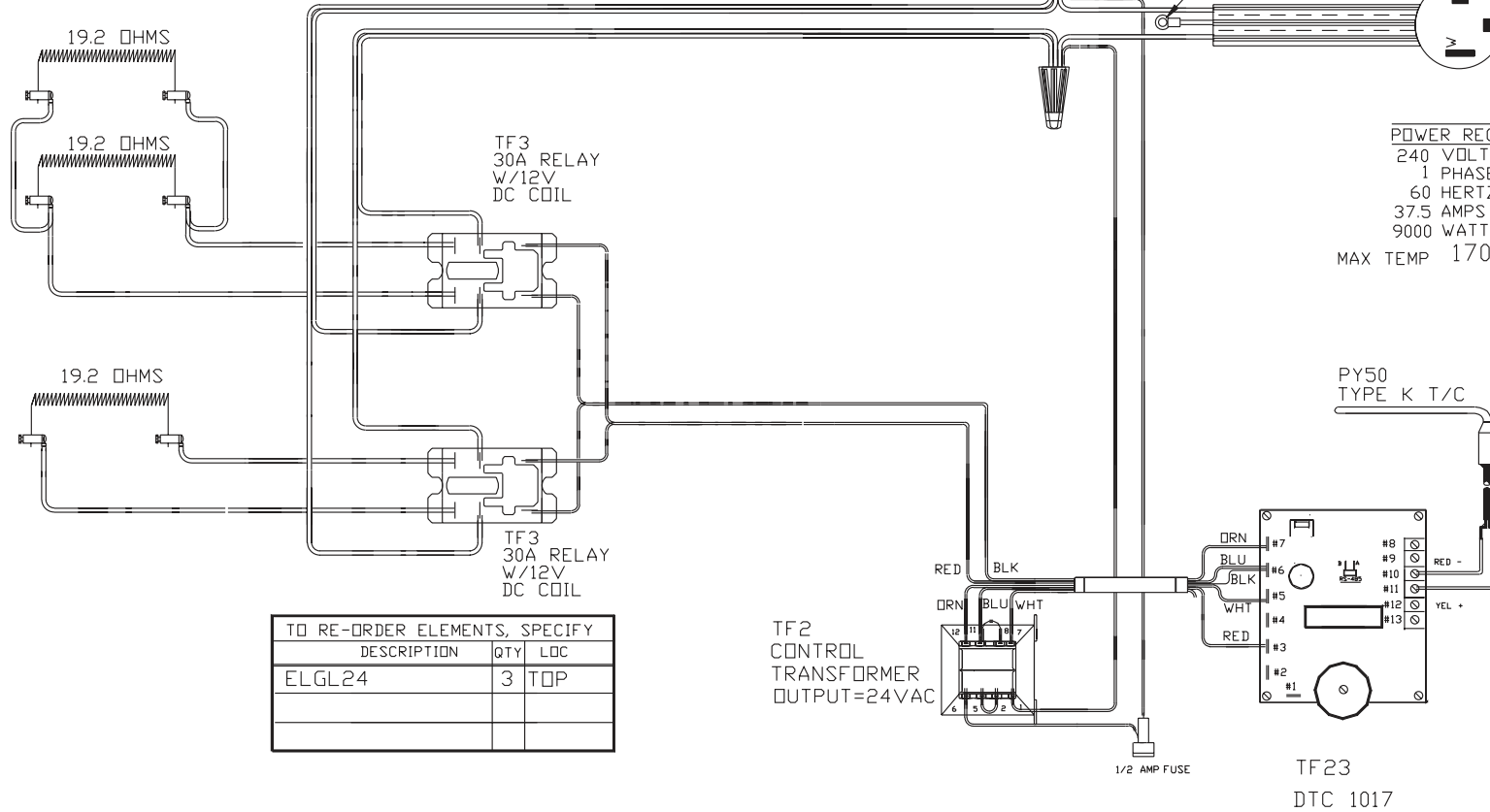
CAUTION!

TO PROVIDE CONTINUED  
PROTECTION AGAINST THE  
RISK OF ELECTRIC SHOCK  
CUSTOMER'S POWER  
SUPPLY MUST BE  
PROPERLY GROUNDED

CR6  
6-2/8-1 CORDSET  
6-50P CAP

POWER REQ'TS

240 VOLTS  
1 PHASE  
60 HERTZ  
37.5 AMPS  
9000 WATTS  
MAX TEMP 1700°F



TO RE-ORDER ELEMENTS, SPECIFY		
DESCRIPTION	QTY	LOC
ELGL24	3	TOP

COMMENTS

PARAGON INDUSTRIES  
2011 SOUTH TOWN EAST BLVD  
MESQUITE, TEXAS 75149

PRODUCT DESCRIPTION  
25"W, 15"H, 23"DP  
240V, 1PH. 60HZ, 37.5A, 9000W

PART NO. GL24AD  
WIRING DIAGRAM

REV  
-