

WIRING NOTE

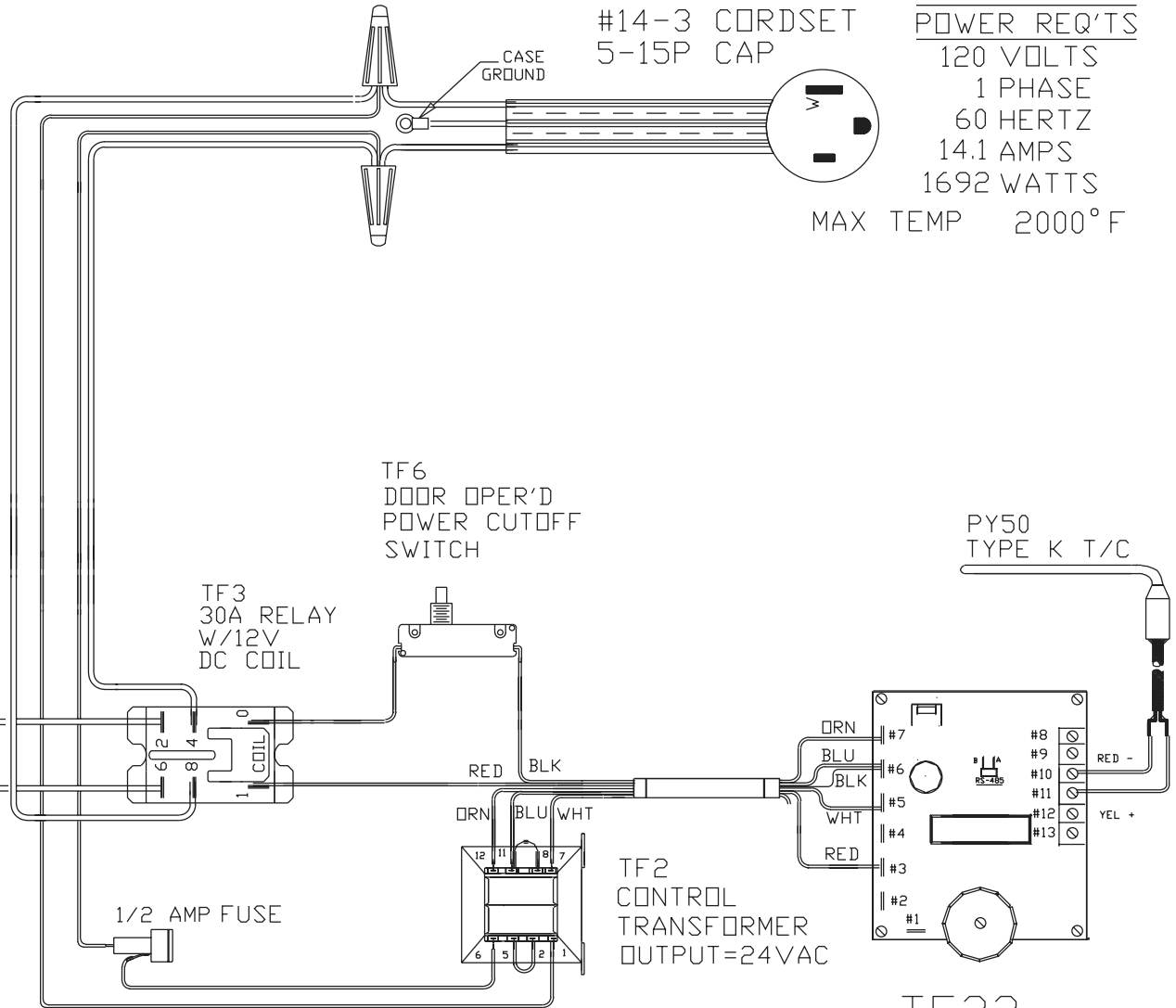
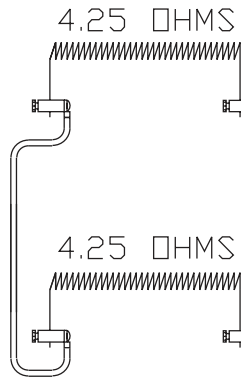
ALL WIRES #14 AWG,  
TYPE SEW/SF2 MINIMUM  
UNLESS OTHERWISE NOTED

CAUTION

TO PROVIDE CONTINUED  
PROTECTION AGAINST THE  
RISK OF ELECTRIC SHOCK,  
CUSTOMER'S POWER  
SUPPLY MUST BE  
PROPERLY GROUNDDED.

CR4  
#14-3 CORDSET  
5-15P CAP

POWER REQ'TS  
120 VOLTS  
1 PHASE  
60 HERTZ  
14.1 AMPS  
1692 WATTS  
MAX TEMP 2000°F



TO RE-ORDER ELEMENTS, SPECIFY		
DESCRIPTION	QTY	LOC
ELHT10	2	SIDES

COMMENTS

PARAGON INDUSTRIES  
2011 SOUTH TOWN EAST BLVD  
MESQUITE, TEXAS 75149

PRODUCT DESCRIPTION  
8.5"W, 8.75"H, 9"DP  
120V, 1PH, 60HZ, 14A, 1692W

PART NO. HT10D  
WIRING DIAGRAM

REV  
-