

NOTE: IF DOOR SWITCH INTERFERES WITH DTC OPERATION, INSTALL A MOV25 (#4019) ACROSS CONTACTS

WIRING NOTE

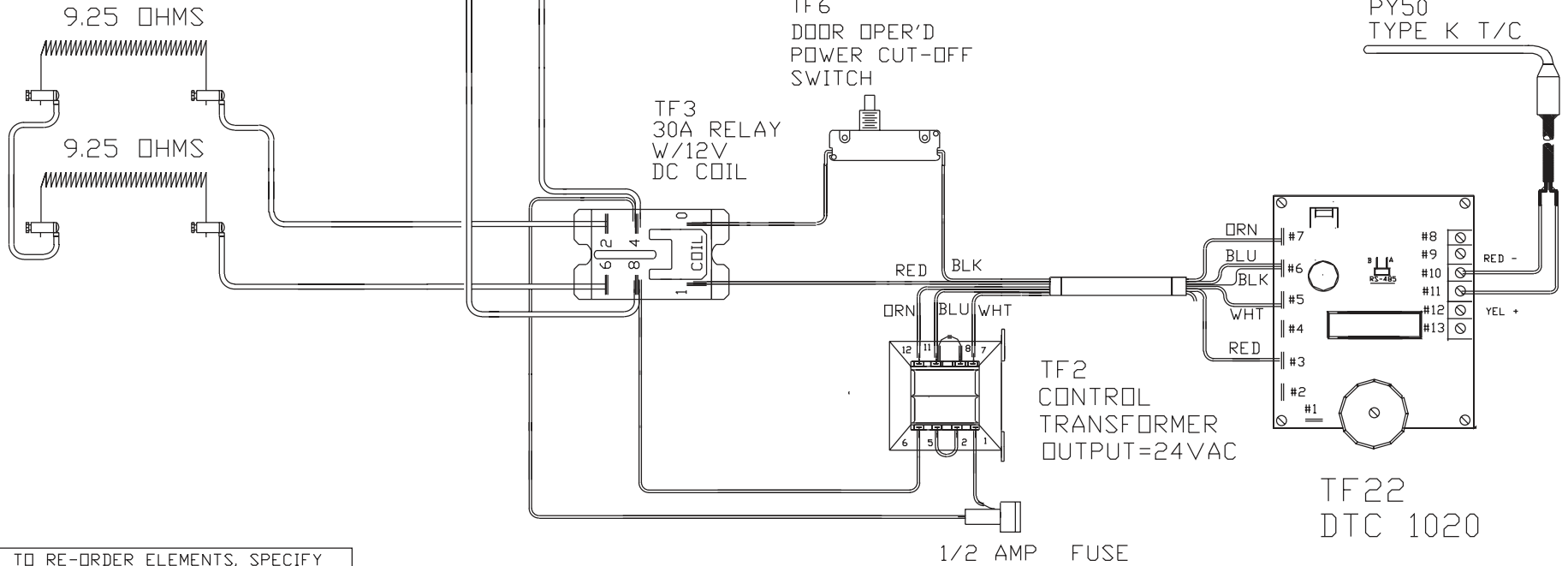
ALL WIRES #14 AWG, TYPE SEW/SF2 MINIMUM UNLESS OTHERWISE NOTED

CR14
#12-3 CORDSET
6-20P CAP

POWER REQ'TS

240 VOLTS
1 PHASE
60 HERTZ
13 AMPS
3120 WATTS

MAX TEMP 2000° F



TO RE-ORDER ELEMENTS, SPECIFY		
DESCRIPTION	QTY	LOC
ELHT14	2	SIDES

COMMENTS	PARAGON INDUSTRIES 2011 SOUTH TOWN EAST BLVD MESQUITE, TEXAS 75149	PRODUCT DESCRIPTION 13"W, 8.75"H, 13.5"DP 240V, 1PH, 60HZ, 13A, 3120W	PART NO.	HT14D	REV	-
			WIRING DIAGRAM			