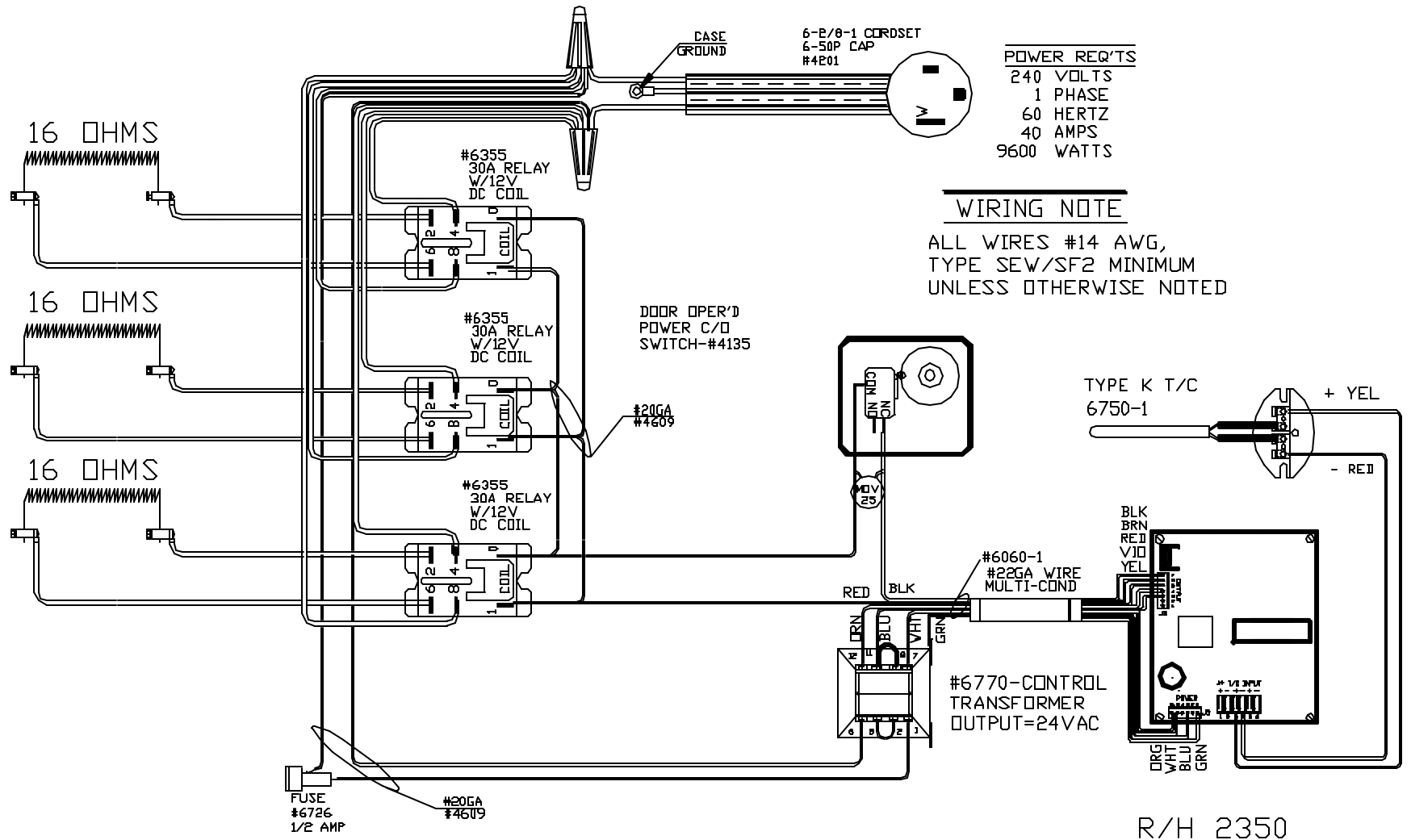


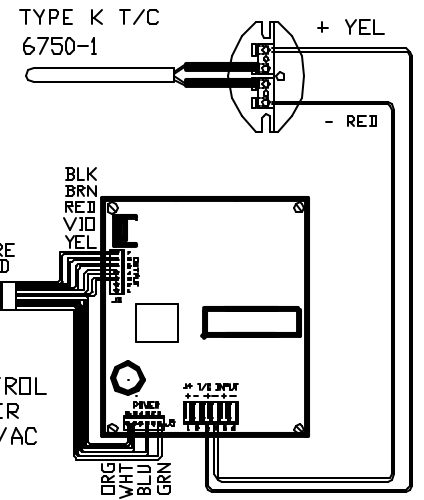
PART NO PMT21



POWER REQ'TS
 240 VOLTS
 1 PHASE
 60 HERTZ
 40 AMPS
 9600 WATTS

WIRING NOTE

ALL WIRES #14 AWG,
 TYPE SEW/SF2 MINIMUM
 UNLESS OTHERWISE NOTED



R/H 2350
 SENTRY 2.0

TO RE-ORDER ELEMENTS, SPECIFY		
DESCRIPTION	QTY	LOC
ELPMT21S	3	SIDES

NOTE: PLEASE REFER TO THIS NUMBER WHEN ORDERING PARTS FOR THIS KILN

CFG 5
 MAX. TEMP.
 2350°F

REV	DATE	BY	DESCRIPTION
-	11/22/04	DTB	

SWITCH BOX ASSY-42082-1

PARAGON INDUSTRIES
 2011 SOUTH TOWN EAST BLVD
 MESQUITE, TEXAS 75149

WIRING DIAGRAM

240V 1 PHASE 60HZ 9600WATTS

PART NO.	REV
PMT21	-
21X13X21D	FILE