

PART NO S0720-1

CAUTION

TO PROVIDE CONTINUED PROTECTION AGAINST THE RISK OF ELECTRIC SHOCK, CUSTOMER'S POWER SUPPLY MUST BE PROPERLY GROUNDED.

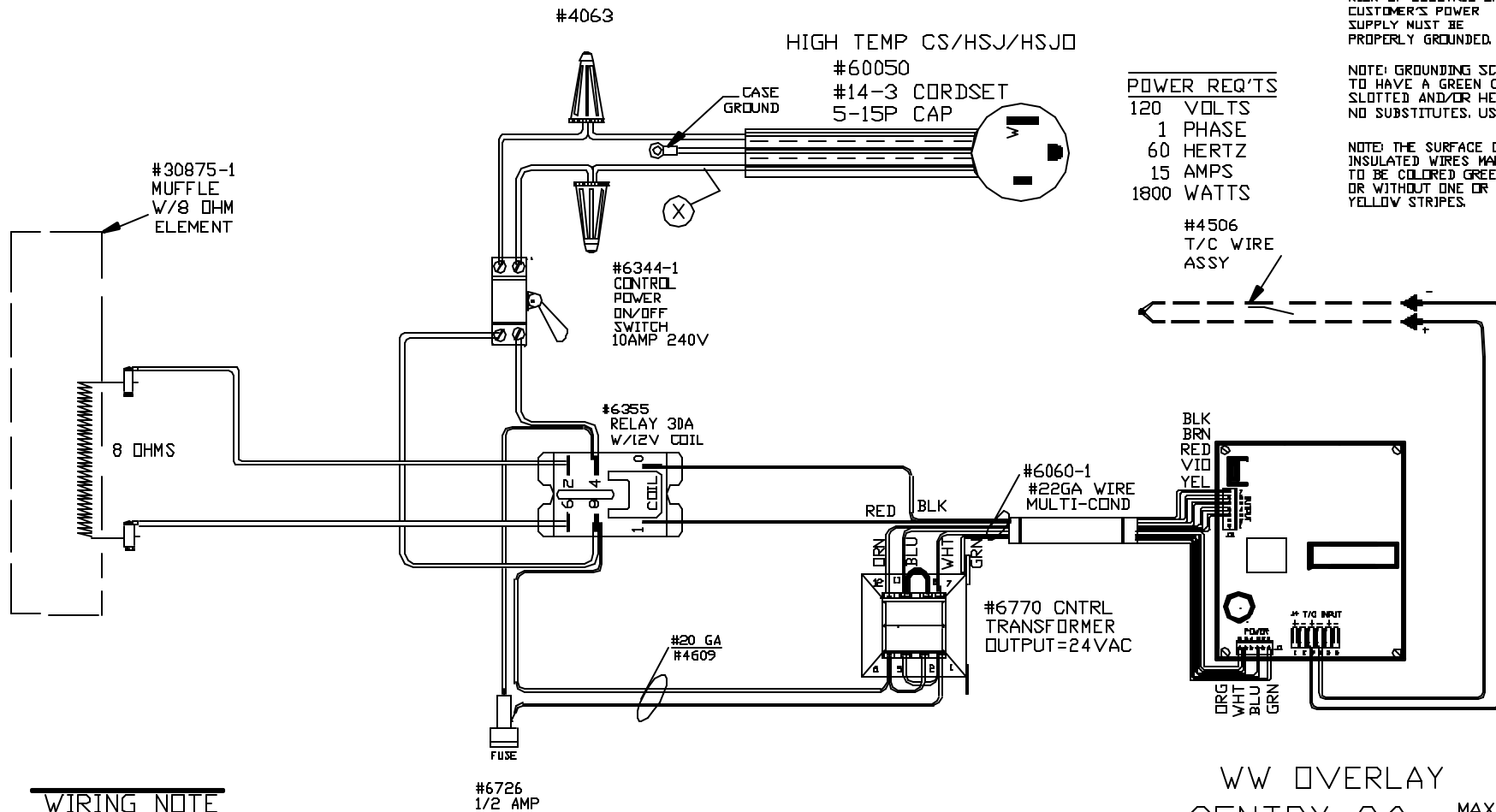
NOTE: GROUNDING SCREW TO HAVE A GREEN COLORED SLOTTED AND/OR HEX HEAD NO SUBSTITUTES. USE #1005

NOTE: THE SURFACE OF THE INSULATED WIRES MARKED ⊗ TO BE COLORED GREEN, WITH OR WITHOUT ONE OR MORE YELLOW STRIPES.

POWER REQ'TS

120 VOLTS
1 PHASE
60 HERTZ
15 AMPS
1800 WATTS

#4506
T/C WIRE
ASSY



WIRING NOTE

ALL WIRES #14 AWG,
TYPE SEW/SF2 MINIMUM
UNLESS OTHERWISE NOTED

WW OVERLAY
SENTRY 2.0 MAX. TEMP.
1700°F
CFG 389

REV	DATE	BY	DESCRIPTION	SWITCH BOX ASSY- 42002	WIRING DIAGRAM	PART NO.	REV
-	8/1/03	DTB		PARAGON INDUSTRIES	120V 1 PHASE 60HZ 1800WATTS	S0720-1	A
A	11/11/03	DTB	CHG CS TO H TEMP ADDED CFG CODE	2011 SOUTH TOWN EAST BLVD		KL 10.5X7X10.5 MFLE	FILE
				MESQUITE, TEXAS 75149			