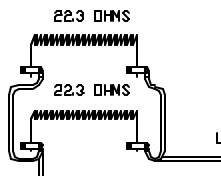
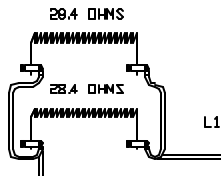
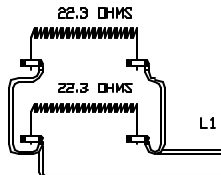


TO RE-ORDER ELEMENTS, SPECIFY		
DESCRIPTION	QTY	LOC
EL796111EA00TB	4	TOP/BOIT
EL796111EA00N	2	MO

**WIRE SIZES**

NOTE: ALL WIRES TO BE TYPE SEW/SF2, #10 AWG MINIMUM UNLESS NOTED

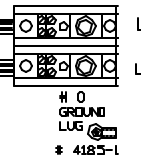
#6311  
30A RELAY  
208-240V  
COIL  
DPST-NO



10 GA WIRE  
SEW

#6078 FUSE BLOCK (2 EA)  
600V 30A 3P  
USES (6) 30A  
CLASS CC FUSES #6076-1

PWR CONN BLOCK



POWER REQ'TS	
L1	240 VOLTS
L2	1 PHASE
	60 HERTZ
	60 AMPS
	14400 WATTS

**CONTROL WIRING NOTE**

ALL CONTROL WIRES  
#20 AVG #1609  
UNLESS OTHERWISE NOTED

**CAUTION**

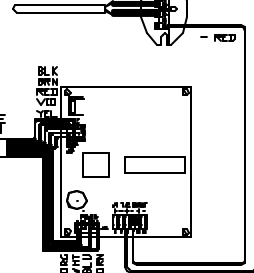
TO PROVIDE CONTINUED PROTECTION AGAINST THE RISK OF ELECTRIC SHOCK, CUSTOMER'S POWER SUPPLY MUST BE PROPERLY GROUNDED.

#6355  
30A RELAY  
V/REV  
IC COIL

#6770-CONTROL  
TRANSFORMER  
OUTPUT=24VAC

FUSE #6726  
1/2 AMP

TYPE K T/C  
675D-1



CONE FIRE  
SENTRY 2.0

CFG 21

2350°F

REV	DATE	BY	DESCRIPTION
-	1/6/05	DTB	

SWITCH BOX ASSY- 42017-4

PARAGON INDUSTRIES  
2011 SOUTH TOWN EAST BLVD  
MESQUITE, TEXAS 75149

WIRING DIAGRAM

240V, 1 PHASE, 60HZ 14400WATTS

PART NO 796111EA00

VIK243-SEN C, SECT