

PART NO W13-1

WIRING NOTE

ALL WIRES #14 AWG,
TYPE SEW/SF2 MINIMUM
UNLESS OTHERWISE NOTED

HIGH TEMP CS/HSJ/HSJD
#12-3 CORDSET
6-20P CAP
#60049

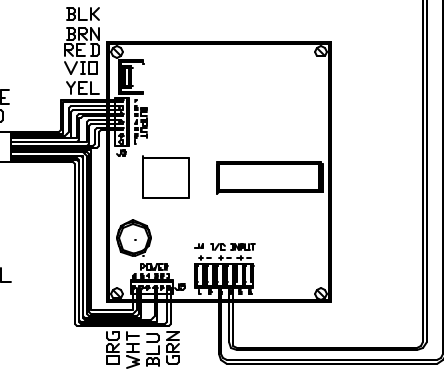
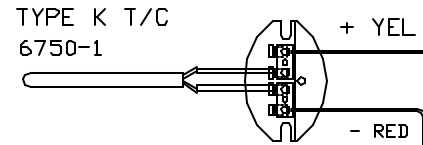
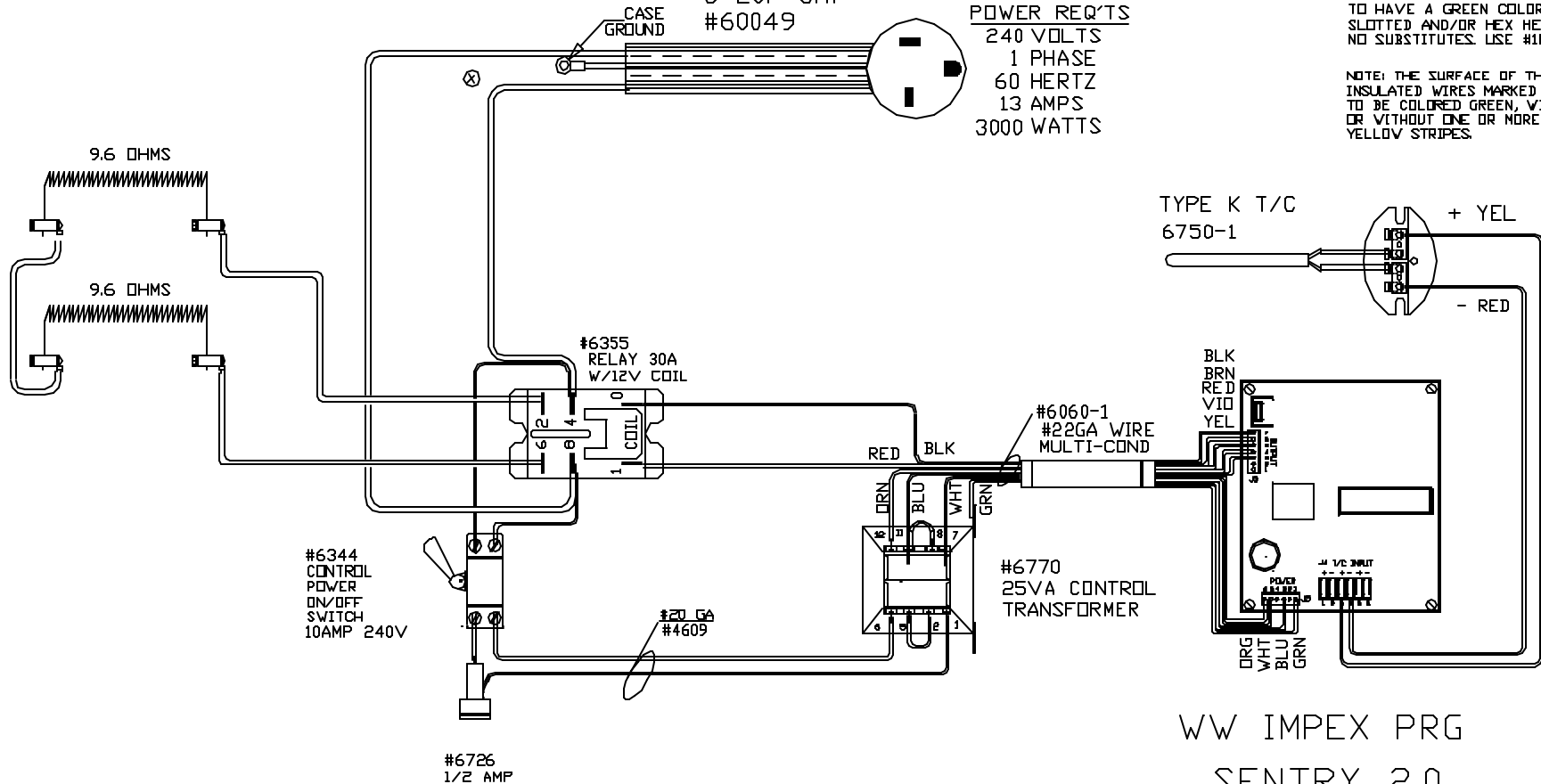
POWER REQ'TS
240 VOLTS
1 PHASE
60 HERTZ
13 AMPS
3000 WATTS

CAUTION

TO PROVIDE CONTINUED
PROTECTION AGAINST THE
RISK OF ELECTRIC SHOCK,
CUSTOMER'S POWER
SUPPLY MUST BE
PROPERLY GROUNDED.

NOTE: GROUNDING SCREW
TO HAVE A GREEN COLORED
SLOTTED AND/OR HEX HEAD
NO SUBSTITUTES. USE #1005

NOTE: THE SURFACE OF THE
INSULATED WIRES MARKED (X)
TO BE COLORED GREEN, WITH
OR WITHOUT ONE OR MORE
YELLOW STRIPES.



WW IMPEX PRG
SENTRY 2.0

CFG 389

STAINLESS
STEEL CASE
1700°F

TO RE-ORDER ELEMENTS, SPECIFY		
DESCRIPTION	QTY	LOC
ELLW13-1S	2	SIDE

NOTE: PLEASE REFER
TO THIS NUMBER WHEN
ORDERING PARTS FOR
THIS KILN

REV	DATE	BY	DESCRIPTION
-	2/1/94	NJN	
A	9/23/03	DTB	UPDATED DWG
B	2/3/04	DTB	ADDED PWR SW, CHG SBA

SWITCH BOX ASSY- 4746-1

PARAGON INDUSTRIES
2011 SOUTH TOWN EAST BLVD
MESQUITE, TEXAS 75149

WIRING DIAGRAM

240V, 1 PHASE, 60HZ, 3000 WATTS

PART NO	REV
W13-1	B
W13	