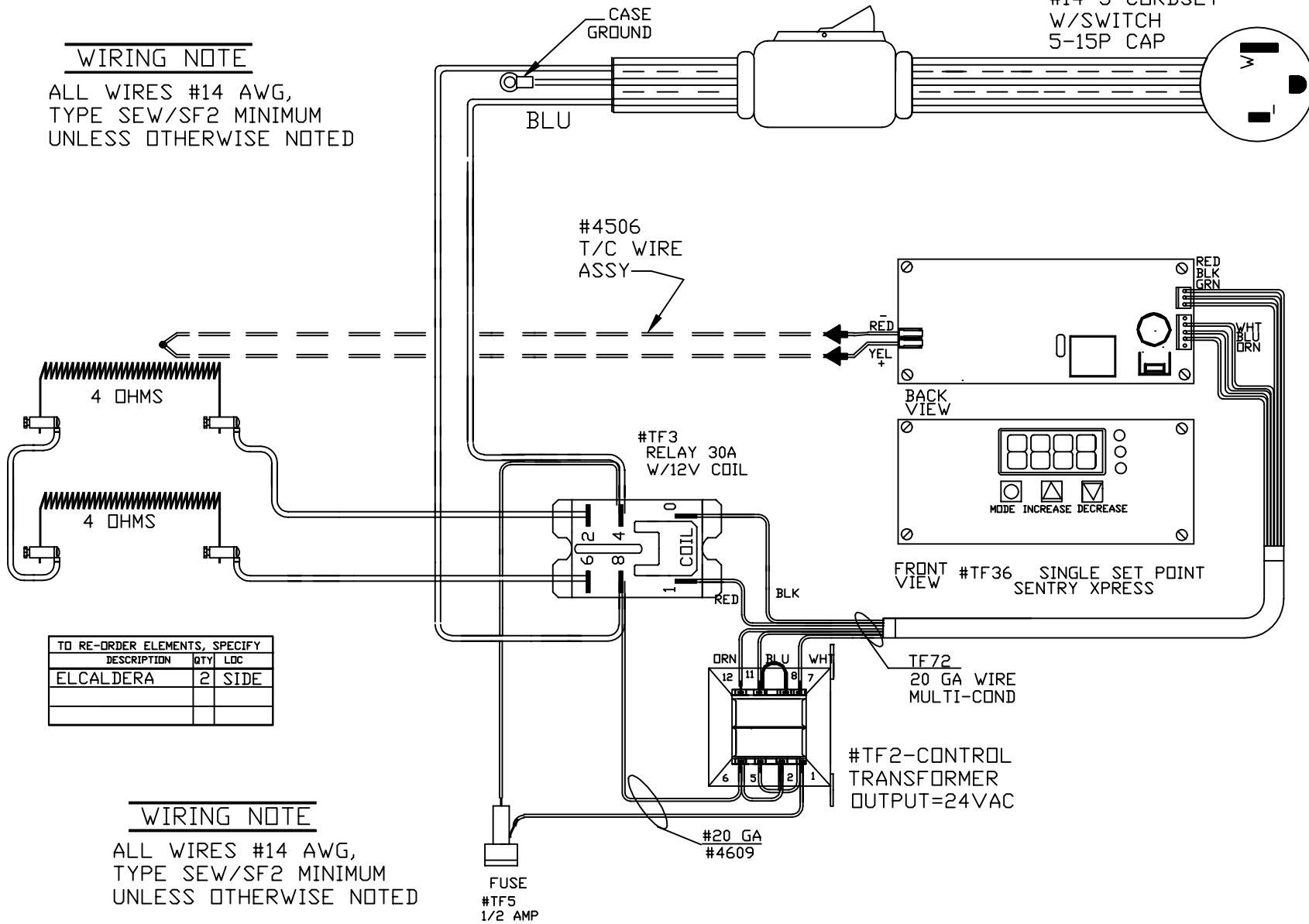


#CR17
#14-3 CORDSET
W/SWITCH
5-15P CAP

POWER REQ'TS
120 VOLTS
1 PHASE
60 HERTZ
15 AMPS
1800 WATTS

WIRING NOTE

ALL WIRES #14 AWG,
TYPE SEW/SF2 MINIMUM
UNLESS OTHERWISE NOTED



TO RE-ORDER ELEMENTS, SPECIFY

DESCRIPTION	QTY	LOC
ELCALDERA	2	SIDE

WIRING NOTE

ALL WIRES #14 AWG,
TYPE SEW/SF2 MINIMUM
UNLESS OTHERWISE NOTED

REV	DATE	BY	DESCRIPTION
-	1-08-02	RLG	

SWITCH BOX ASSY-
PARAGON INDUSTRIES
2011 SOUTH TOWN EAST BLVD
MESQUITE, TEXAS 75149

WIRING DIAGRAM
120V ,1 PHASE ,60HZ ,1800 WATTS

PART NO.	REV
CALDERA	-
CALDERA 8X8X6 SSP-PAR	